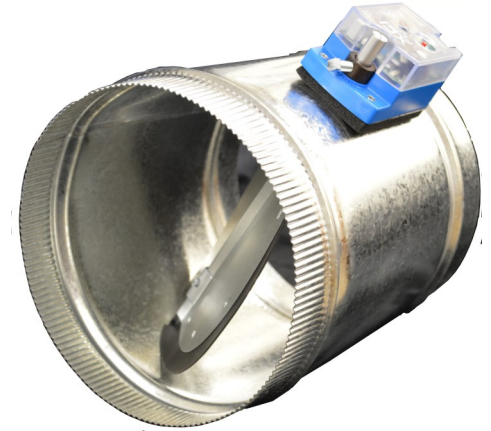




# SPECIFICATION SHEET FP-POC

## Supply Air Damper 3-Wire Power Open/Power Close

- DEPENDABLE POWER OPEN/POWER CLOSE
- LED INDICATORS FOR FULL OPEN AND CLOSED POSITIONS
- INSULATION PAD UNDER MOTOR
- AVAILABLE SIZES: 6", 7", 8", 9", 10", 12", 14", 16" & 18"
- LONG-LIFE ACTUATOR
- 5 YEAR FACTORY WARRANTY



### GENERAL DESCRIPTION

The FAST Parts FP-POC-series low pressure two-position damper was developed for precise control of supply air in the HVAC duct system. The solid aluminum shaft insures years of dependable operation. The damper actuator with built-in LED lights is designed for years of care-free operation. The power open/power close design guarantees precise control of supply air into each zone. Poron® rubber blade edges provides a positive seal for the blade. **Our gasketed damper blade is designed to compensate when installation conditions are not exact and the damper is not perfectly round.** Long-life nylon bushings insure a quiet, low friction operation of the damper. Heavy-duty galvanized steel spiral cylinder provides strength to keep the damper round. One crimped end and one straight end allows for flexible installation. 30-Second operation to full open or closed position. A minimum open position can be set to bleed air for ventilation or duct balancing.

- **QUALITY DESIGN**
- **SUPERIOR FEATURES**
- **FLEXIBLE INSTALLATION**

### SPECIFICATIONS

<b>Power</b>	24VAC, 2 VA typical (3 VA Max)
<b>Actuator</b>	FP-POCJ Brushless Motor Design 10 in-lb Torque Power-Open/Power-Close 30 Second Operation Cycle Max 90 Degree Travel
<b>Indicator</b>	LED Indicates Full Open or Close Blinks When Opening & Closing
<b>Wiring</b>	3 Screw Terminals PO, PC, Common Use 18/3 Solid Core Wire



<b>Part Number</b>	<b>D</b> <i>Cylinder</i> <i>Diameter</i> <i>(Inches)</i>	<b>L</b> <i>Cylinder</i> <i>Length</i> <i>(Inches)</i>
FP-POC06	6	12
FP-POC07	7	12
FP-POC08	8	12
FP-POC09	9	12
FP-POC10	10	12
FP-POC12	12	12
FP-POC14	14	14
FP-POC16	16	16
FP-POC18	18	18

