

# ***PRICE CATALOG***

**Residential  
Cooling and Heating**



***MARATHERM<sup>®</sup>***

***PART NO. 401 65 9912 03  
EFFECTIVE: Aug, 2008***

# Table of Contents

## Residential Cooling & Heating Equipment

Model Number	Description
ALL AC and HP	Model Number Accessory Identification, Part Number Identification
<b>Air Conditioners</b>	
R4A3	EFFICIENT 13 SEER AIR CONDITIONER, R-410A
R2A3	EFFICIENT 13 SEER AIR CONDITIONER, R-22
<b>Heat Pumps</b>	
R4H3	EFFICIENT 13 SEER HEAT PUMP, R-410A
R2H3	EFFICIENT 13 SEER HEAT PUMP, R-22
<b>Fan Coils</b>	
FSU, FSA	Model Number Identification
EBAC, AMWK	Model Number Identification
EHK, AMWK	Model Number Identification
FVM2, FVM4	VARIABLE SPEED, HIGH EFFICIENCY, MULTIPOSITION FAN COILS, R-22 & R-410A
FEM2, FEM4	HIGH EFFICIENCY, MULTIPOSITION FAN COILS, R-22 & R-410A
FSM2, FSM4	MULTIPOSITION FAN COILS, R-22 & R-410A
FSU2, FSU4	UPFLOW FAN COILS, R-22 & R-410A
FSA2	APARTMENT FAN COILS, R-22
FSA4	APARTMENT FAN COILS, R-410A
<b>Accessories – Fan Coils</b>	
(FSU, FSM, FEM)	Fan Coil Accessories
(FSA) + (FSU, FSM, FEM)	Apartment Fan Coil Accessories + Fan Coil Electric Heaters
(FSA)	Apartment Fan Coil
<b>Furnace Coils</b>	
ALL Furnace Coils	Model Number Identification
EDM4	MULTIPOSITION CASED COILS, R-410A
EDM2	MULTIPOSITION CASED COILS, R-22
EDD4	UPFLOW/DOWNFLOW CASED COILS, R-410A
EDD2	UPFLOW/DOWNFLOW CASED COILS, R-22
EBU2	UPFLOW CASED COILS, R-22
EDA4	A-COILS, R-410A
EDA2	A-COILS, R-22
EBA2	A-COILS, R-22
EMA2, EMA4	COILS for MANUFACTURED HOUSING (N-COILS), R22 & R410A
EHD2, EHD4	CASED HORIZONTAL DUCT COILS, R22 & R-410A

# Table of Contents

## Residential Cooling & Heating Equipment (continued)

Model Number	Description
<b>Modular Blowers and Electric Furnace</b>	
ALL Modulares	Model Number Identification, Accessory Part Number Identification
EHK, AMWK	Electric Heater Part Number Identification
EHIA	Electric Heater Part Number Identification
MV	MODULAR VARIABLE SPEED BLOWER CABINET
MF	MODULAR ELECTRIC FURNACE
MB	MODULAR BLOWER CABINET
<b>Accessories – Modular Blowers and Electric Furnace</b>	
(MV, MF, MB)	Modular Blower and Electric Furnace Accessories
<b>Gas Furnaces</b>	
ALL Gas Furnaces	Model Number Identification
ALL Gas Furnaces	Model Number Identification, Accessory Part Number Identification
N9MPD	90% Single Stage Furnace – Dual Certified
N9MP2	90% Single Stage Furnace – 2 Pipe
N9MP1	90% Single Stage Furnace – 1 Pipe
N8MPN	80% Single Stage Furnace
N8MPL	80% Single Stage Furnace – Low NOx
<b>Accessories – Gas Furnaces</b>	
N8MPN, N8MPL, N9MP2, N9MP1, N9MPD	80% and 90% Gas Furnace Accessories

# MODEL NUMBER IDENTIFICATION

## Air Conditioners and Heat Pumps

### OUTDOOR UNIT MODEL NUMBER IDENTIFICATION GUIDE (single phase)

Digit Position:	1	2	3	4	5, 6	7	8	9	10	11	12									
Example Part Number:	<b>R</b>	<b>2</b>	<b>A</b>	<b>3</b>	<b>18</b>	<b>A</b>	<b>K</b>	<b>C</b>	<b>1</b>	<b>0</b>	<b>0</b>									
Product Family	<b>REFRIGERANT</b>		<b>TYPE</b>																	
2 = R-22																				
4 = R-410A																				
A = Air Conditioner																				
H = Heat Pump			<b>NOMINAL EFFICIENCY</b>																	
3 = 13 SEER																				
4 = 14 SEER																				
18 = 18,000 BTUH = 1½ tons																				
24 = 24,000 BTUH = 2 tons			<b>NOMINAL CAPACITY</b>																	
30 = 30,000 BTUH = 2½ tons																				
36 = 36,000 BTUH = 3 tons																				
42 = 42,000 BTUH = 3½ tons																				
48 = 48,000 BTUH = 4 tons																				
60 = 60,000 BTUH = 5 tons																				
A = Standard Grille			<b>FEATURES</b>																	
G = Coil Guard Grille																				
K = 208/230-1-60																				
Sales Code																				
Engineering Revision																				
Extra Digit																				
Extra Digit																				
Extra Digit																				

### ACCESSORIES PART NUMBER IDENTIFICATION GUIDE

Digit Position:	1	2	3	4	5	6, 7	8, 9	10, 11
Example Part Number:	<b>N</b>	<b>A</b>	<b>S</b>	<b>A</b>	<b>0</b>	<b>0 1</b>	<b>01</b>	<b>CH</b>
N = Non-Branded	<b>BRANDING</b>							
A = Accessory	<b>PRODUCT GROUP</b>							
S = Split System (AC & HP)	<b>KIT USAGE</b>							
A = Original	<b>MAJOR SERIES</b>							
B = 2nd Generation								
0 = Generic or Not Applicable								
2 = R-22	<b>REFRIGERANT</b>							
4 = R-410A								
Product Identifier Number								
Package Quantity								
Type of Kit (Example: CH = Crankcase Heater)								



# R4A3

## EFFICIENT 13 SEER AIR CONDITIONER ENVIRONMENTALLY SOUND R-410A REFRIGERANT

**1½ THRU 5 TONS SPLIT SYSTEM**

**208 / 230 Volt, 1-phase, 60 Hz**

### REFRIGERATION CIRCUIT

- Copeland Scroll™ compressors on all models
- Copper tube / aluminum fin coil

### EASY TO INSTALL AND SERVICE

- Easy Access service valves on all models
- External high and low refrigerant service ports
- Only two screws to access control panel
- Factory charged with R-410A refrigerant

### BUILT TO LAST

- Pre-painted cabinet finish over galvanized steel
- Coated inlet grille with 2" spacing standard, alternate models available with ¾" grille spacing for extra protection
- 5 year compressor limited warranty
- 5 year coil limited warranty
- 5 year parts limited warranty



Rated in accordance with ARI Standard 210. Certification applies only when used with proper components as listed with ARI.

Model Number	Size (tons)	Nominal BTU/hr	Min. Circuit Ampacity	Max. Fuse or Breaker	Operating Dimensions heightxwidthxdepth (in)	Ship / Operating Weight (lbs)	Price
R4A318AKA	1½	18,000	11.7	20	24 <sup>13</sup> / <sub>16</sub> x 23 <sup>3</sup> / <sub>8</sub> x 23 <sup>3</sup> / <sub>8</sub>	120 / 104	
18GKA	same model with ¾" spacing inlet grille					124 / 108	
R4A324AKA	2	24,000	17.6	30	24 <sup>13</sup> / <sub>16</sub> x 23 <sup>3</sup> / <sub>8</sub> x 23 <sup>3</sup> / <sub>8</sub>	123 / 107	
24GKA	same model with ¾" spacing inlet grille					127 / 111	
R4A330AKA	2½	30,000	16.8	25	28 <sup>7</sup> / <sub>16</sub> x 23 <sup>3</sup> / <sub>8</sub> x 23 <sup>3</sup> / <sub>8</sub>	126 / 110	
30GKA	same model with ¾" spacing inlet grille					130 / 114	
R4A336AKA	3	36,000	17.6	30	35 <sup>3</sup> / <sub>16</sub> x 23 <sup>3</sup> / <sub>8</sub> x 23 <sup>3</sup> / <sub>8</sub>	139 / 122	
36GKA	same model with ¾" spacing inlet grille					144 / 127	
R4A342AKA	3½	42,000	23.5	40	31 <sup>13</sup> / <sub>16</sub> x 31 <sup>3</sup> / <sub>16</sub> x 31 <sup>3</sup> / <sub>16</sub>	187 / 164	
42GKA	same model with ¾" spacing inlet grille					195 / 172	
R4A348AKA	4	48,000	26.2	40	38 <sup>5</sup> / <sub>8</sub> x 31 <sup>3</sup> / <sub>16</sub> x 31 <sup>3</sup> / <sub>16</sub>	206 / 181	
48GKA	same model with ¾" spacing inlet grille					217 / 190	
R4A360AKA	5	60,000	34.4	50	28 <sup>7</sup> / <sub>16</sub> x 31 <sup>3</sup> / <sub>16</sub> x 31 <sup>3</sup> / <sub>16</sub>	216 / 190	
60GKA	same model with ¾" spacing inlet grille					224 / 198	

# R2A3

## EFFICIENT 13 SEER AIR CONDITIONER

**1½ THRU 5 TONS SPLIT SYSTEM**

**208 / 230 Volt, 1-phase, 60 Hz**

### REFRIGERATION CIRCUIT

- Copeland Scroll™ compressors on all models
- Copper tube / aluminum fin coil

### EASY TO INSTALL AND SERVICE

- Easy Access service valves on all models
- External high and low refrigerant service ports
- Only two screws to access control panel
- Factory charged with R-22 refrigerant

### BUILT TO LAST

- Pre-painted cabinet finish over galvanized steel
- Coated inlet grille with 2" spacing standard, alternate models available with ¾" grille spacing for extra protection
- 5 year compressor limited warranty
- 5 year coil limited warranty
- 5 year parts limited warranty



Rated in accordance with ARI Standard 210.  
Certification applies only when used with proper components as listed with ARI.



Model Number	Size (tons)	Nominal BTU/hr	Min. Circuit Ampacity	Max. Fuse or Breaker	Operating Dimensions height x width x depth (in)	Ship/Operating Weight (lbs)	Price
R2A318AKC	1½	18,000	10.1	15	24 <sup>13</sup> / <sub>16</sub> x 23 <sup>1</sup> / <sub>8</sub> x 23 <sup>1</sup> / <sub>8</sub>	120 / 105	
18GKC	same model with ¾" spacing inlet grille					124 / 109	
R2A324AKC	2	24,000	13.6	20	28 <sup>7</sup> / <sub>16</sub> x 23 <sup>1</sup> / <sub>8</sub> x 23 <sup>1</sup> / <sub>8</sub>	123 / 109	
24GKC	same model with ¾" spacing inlet grille					128 / 113	
R2A330AKC	2½	30,000	18.4	30	28 <sup>7</sup> / <sub>16</sub> x 23 <sup>1</sup> / <sub>8</sub> x 23 <sup>1</sup> / <sub>8</sub>	127 / 113	
30GKC	same model with ¾" spacing inlet grille					131 / 117	
R2A336AKC	3	36,000	19.1	30	24 <sup>13</sup> / <sub>16</sub> x 31 <sup>3</sup> / <sub>16</sub> x 31 <sup>3</sup> / <sub>16</sub>	157 / 135	
36GKC	same model with ¾" spacing inlet grille					163 / 141	
R2A342AKC	3½	42,000	25.4	40	31 <sup>13</sup> / <sub>16</sub> x 31 <sup>3</sup> / <sub>16</sub> x 31 <sup>3</sup> / <sub>16</sub>	188 / 165	
42GKC	same model with ¾" spacing inlet grille					195 / 172	
R2A348AKC	4	48,000	26.7	40	42 x 31 <sup>3</sup> / <sub>16</sub> x 31 <sup>3</sup> / <sub>16</sub>	208 / 174	
48GKC	same model with ¾" spacing inlet grille					219 / 184	
R2A360AKC	5	60,000	33.1	50	35 <sup>3</sup> / <sub>16</sub> x 31 <sup>3</sup> / <sub>16</sub> x 31 <sup>3</sup> / <sub>16</sub>	233 / 208	
60GKC	same model with ¾" spacing inlet grille					240 / 217	



# R4H3

## EFFICIENT 13 SEER HEAT PUMP ENVIRONMENTALLY SOUND R-410A REFRIGERANT

**1½ THRU 5 TONS SPLIT SYSTEM**

**208 / 230 Volt, 1-phase, 60 Hz**

### REFRIGERATION CIRCUIT

- Copeland Scroll™ compressors on all models
- Suction line accumulator factory installed
- Integrated solid state control with Time-Temperature Defrost
- High and Low pressure switches
- Copper tube / aluminum fin coil

### EASY TO INSTALL AND SERVICE

- Easy Access service valves on all models
- External high and low refrigerant service ports
- Only two screws to access control panel
- Factory charged with R-410A refrigerant

### BUILT TO LAST

- Pre-painted cabinet finish over galvanized steel
- Coated inlet grille with 2" spacing standard, alternate models available with ¾" grille spacing for extra protection
- 5 year compressor limited warranty
- 5 year coil limited warranty
- 5 year parts limited warranty



Rated in accordance with ARI Standard 210/240.  
Certification applies only when used with proper components as listed with ARI.



Model Number	Size (tons)	Nominal BTU/hr	Min. Circuit Ampacity	Max. Fuse or Breaker	Operating Dimensions heightxwidthxdepth (in)	Shipping/Operating Weight (lbs)	Price
R4H318AKA	1½	18,000	12.9	20	28⅞ x 23⅞ x 23⅞	131 / 117	
18GKA	same model with ¾" spacing inlet grille					136 / 123	
R4H324AKA	2	24,000	16.8	25	28⅞ x 23⅞ x 23⅞	132 / 118	
24GKA	same model with ¾" spacing inlet grille					137 / 124	
R4H330AKA	2½	30,000	20.8	30	35⅜ x 23⅞ x 23⅞	147 / 132	
30GKA	same model with ¾" spacing inlet grille					155 / 139	
R4H336AKA	3	36,000	22.2	35	28⅞ x 31⅜ x 31⅜	175 / 151	
36GKA	same model with ¾" spacing inlet grille					180 / 159	
R4H342AKA	3½	42,000	26.2	40	31⅜ x 31⅜ x 31⅜	205 / 182	
42GKA	same model with ¾" spacing inlet grille					217 / 193	
R4H348AKA	4	48,000	28.7	40	38⅝ x 31⅜ x 31⅜	220 / 198	
48GKA	same model with ¾" spacing inlet grille					232 / 209	
R4H360AKA	5	60,000	34.3	50	31⅜ x 31⅜ x 31⅜	243 / 220	
60GKA	same model with ¾" spacing inlet grille					247 / 225	

# R2H3

## EFFICIENT 13 SEER HEAT PUMP

### 1½ THRU 5 TONS SPLIT SYSTEM

208 / 230 Volt, 1-phase, 60 Hz

#### REFRIGERATION CIRCUIT

- Copeland Scroll™ compressors on all models
- Suction line accumulator factory installed
- Integrated solid state control with Time-Temperature Defrost
- Low pressure switch
- Copper tube / aluminum fin coil

#### EASY TO INSTALL AND SERVICE

- Easy Access service valves on all models
- External high and low refrigerant service ports
- Only two screws to access control panel
- Factory charged with R-22 refrigerant

#### BUILT TO LAST

- Pre-painted cabinet finish over galvanized steel
- Coated inlet grille with 2" spacing standard, alternate models available with ¾" grille spacing for extra protection
- 5 year compressor limited warranty
- 5 year coil limited warranty
- 5 year parts limited warranty



Rated in accordance with ARI Standard 210/240.  
Certification applies only when used with proper components as listed with ARI.



Model Number	Size (tons)	Nominal BTU/hr	Min. Circuit Ampacity	Max. Fuse or Breaker	Operating Dimensions height x width x depth (in)	Shipping/Operating Weight (lbs)	Price
R2H318AKC	1½	18,000	11.7	20	28⅞ x 23⅛ x 23⅛	127 / 114	
18GKC	same model with ¾" spacing inlet grille					134 / 119	
R2H324AKC	2	24,000	14.4	20	35⅜ x 23⅛ x 23⅛	137 / 120	
24GKC	same model with ¾" spacing inlet grille					143 / 126	
R2H330AKC	2½	30,000	17.6	30	28⅞ x 31⅜ x 31⅜	177 / 153	
30GKC	same model with ¾" spacing inlet grille					183 / 161	
R2H336AKC	3	36,000	21.1	30	31⅜ x 31⅜ x 31⅜	192 / 168	
36GKC	same model with ¾" spacing inlet grille					198 / 177	
R2H342AKC	3½	42,000	23.8	40	38⅝ x 31⅜ x 31⅜	213 / 188	
42GKC	same model with ¾" spacing inlet grille					223 / 198	
R2H348AKC	4	48,000	27.3	40	28⅞ x 31⅜ x 31⅜	223 / 200	
48GKC	same model with ¾" spacing inlet grille					230 / 207	
R2H360AKC	5	60,000	32.7	50	42 x 31⅜ x 31⅜	285 / 260	
60GKC	same model with ¾" spacing inlet grille					298 / 273	



# MODEL NUMBER IDENTIFICATION

## Fan Coils

FVM, FEM, FSM, FSU series FAN COIL MODEL NUMBER IDENTIFICATION GUIDE								
	<b>F</b>	<b>S</b>	<b>U</b>	<b>2</b>	<b>X</b>	<b>1800</b>	<b>A</b>	<b>1</b>
F = Fan Coil	<b>MOTOR TYPE</b>		<b>INSTALLATION TYPE</b>	<b>REFRIGERANT</b>	<b>METERING DEVICE</b>	<b>NOMINAL CAPACITY</b>		
S = Standard PSC								
E = BPM (Brushless Permanent Magnet)								
V = Variable Speed								
U = Upflow	<b>INSTALLATION TYPE</b>		<b>REFRIGERANT</b>	<b>METERING DEVICE</b>	<b>NOMINAL CAPACITY</b>			
M = Multiposition								
2 = R-22	<b>REFRIGERANT</b>		<b>METERING DEVICE</b>	<b>NOMINAL CAPACITY</b>				
4 = Environmentally Sound R-410A								
X = TXV	<b>METERING DEVICE</b>		<b>NOMINAL CAPACITY</b>					
1800 = 18,000 BTUH = 1½ tons								
2400 = 24,000 BTUH = 2 tons	<b>NOMINAL CAPACITY</b>							
3000 = 30,000 BTUH = 2½ tons								
3500 & 3600 = 36,000 BTUH = 3 tons	<b>NOMINAL CAPACITY</b>							
4200 = 42,000 BTUH = 3½ tons								
4800 = 48,000 BTUH = 4 tons	<b>NOMINAL CAPACITY</b>							
6000 = 60,000 BTUH = 5 tons								
Sales Code	<b>NOMINAL CAPACITY</b>							
Engineering Revision								

FSA series FAN COIL MODEL NUMBER IDENTIFICATION GUIDE								
	<b>F</b>	<b>S</b>	<b>A</b>	<b>2</b>	<b>X</b>	<b>18**</b>	<b>A</b>	<b>1</b>
F = Fan Coil	<b>MOTOR TYPE</b>		<b>INSTALLATION TYPE</b>	<b>REFRIGERANT</b>	<b>METERING DEVICE</b>	<b>NOMINAL CAPACITY</b>		
S = Standard PSC								
A = Apartment								
2 = R-22								
4 = R-410A	<b>REFRIGERANT</b>		<b>METERING DEVICE</b>	<b>NOMINAL CAPACITY</b>				
X = TXV								
18** = 18,000 BTUH = 1½ tons	<b>NOMINAL CAPACITY</b>							
24** = 24,000 BTUH = 2 tons								
30** = 30,000 BTUH = 2½ tons	<b>NOMINAL CAPACITY</b>							
36** = 36,000 BTUH = 3 tons								
Sales Code	<b>NOMINAL CAPACITY</b>							
Engineering Revision								

# MODEL NUMBER IDENTIFICATION

## Fan Coils (Accessories)

FVM, FEM, FSM, FSU, EBV series FAN COIL ACCESSORY PART NUMBER IDENTIFICATION GUIDE					
	EB	AC	01	NCB	A
EB = Evaporator Blower					
AC = Accessory					
Product Identifier Number					
NCB = Non-Combustible Base Kit					
DFK = Down Flow Kit					
PLG = Power Plug (no heat kit)					
SPK = Single Point Wiring Kit					
FKS = Filter Kit Small					
FKM = Filter Kit Medium					
FKL = Filter Kit Large					
FKX = Filter Kit Extra Large					
CTK = Condensate Trap Kit (PVC pipe)				ACCESSORY TYPE	
Sales Code					

FSA series FAN COIL ACCESSORY MODEL NUMBER IDENTIFICATION GUIDE							
	A	M	WK	001	CK	A	1
A = Accessory		PRODUCT TYPE					
C = Cooling							
H = Heating							
M = Multi-use (Cooling and/or Heating)							
X = Special							
Series							
Product Identifier							
CK = Cooling Control Kit                      MK = Wall Mounting Brackets Kit							
WG = Louvered Wall Panel with Frame		ACCESSORY TYPE					
Sales Code							
Engineering Revision							

# MODEL NUMBER IDENTIFICATION

## Fan Coils (Electric Heaters)

FVM, FEM, FSM, FSU, EBV series FAN COIL ELECTRIC HEATER PART NUMBER IDENTIFICATION GUIDE						
	<b>EHK</b>	<b>05</b>	<b>A</b>	<b>K</b>	<b>N</b>	<b>1</b>
EHK = Electric Heater Kit						
05 = 5 kW						
07 = 7 kW						
09 = 9 kW						
10 = 10 kW						
15 = 15 kW						
18 = 18 kW						
20 = 20 kW						
25 = 25 kW						
30 = 30 kW						
<b>NOMINAL HEAT VALUE</b>						
Sales Code						
K = 208 / 230 single-phase						
H = 208 / 230, 3-phase						
KC = 208 / 230, supplied as single phase, field convertible to 3-phase						
HC = 208 / 230 supplied as 3-phase, field convertible to single phase						
<b>VOLTAGE (60 Hz)</b>						
Product Identifier						
Engineering Revision						

FSA series FAN COIL ELECTRIC HEATER PART NUMBER IDENTIFICATION GUIDE					
	<b>AMW</b>	<b>K</b>	<b>005</b>	<b>AH</b>	<b>1</b>
AMW = Electric Heat Kit					
K = 208 / 230 single-phase					
<b>VOLTAGE (60 Hz)</b>					
005 = 5 kW					
007 = 7 kW					
011 = 11 kW					
<b>NOMINAL HEAT VALUE</b>					
Sales Code					
Engineering Revision					

# FVM2, FVM4

## VARIABLE SPEED FAN COILS

### ALL MODELS (2, 3, 4, and 5 Tons)

- Supports two-stage outdoor units
- Available for R-22 or Environmentally Sound R-410A systems
- Bolt-on, hard shut-off TXV metering device factory installed on all models
- Copper tube / aluminum fin coil
- Sweat connections
- Primary and secondary drain fittings with brass inserts
- Time delay relay (TDR)
- Field installed heater packages from 5 kW – 30 kW available separately
- HUD approved for manufactured housing
- 208/230–1–60 supply voltage
- Multiposition installation – upflow or horizontal left standard, horizontal right with minor modification (field convertible to downflow with accessory kits)
- Filter factory supplied
- Heat staging option
- Humidifier/Humidistat terminals
- 1 inch thick insulation with R value of 4.2

### PERFORMANCE

- High Efficiency variable speed Electronically Commutated Motor “ECM” on all models
- Adjustable cooling and heating ON/OFF delay
- Heat Pump Comfort option to provide higher than normal heating air delivery temperature
- Units tested and certified by manufacturer to achieve a 2% or less leakage rate at 1.0 inch water column

### EASY TO INSTALL AND SERVICE

- Multiple electrical entry locations
- TXV and manifold positioned to the side for easier cleaning
- Zero clearance without heaters

### WARRANTY

- 10 year limited evaporator coil
- 7 year limited parts warranty



Rated in accordance with ARI Standard 210 and/or 240. Certification applies only when used with proper components as listed with ARI.



Model Series	MODEL	Model Size	Tons	CFM Range		Dimensions H x W x D (in)	Filter Size (in)	Ship Wt.	Price
				High	Low				
R-410A	FVM4X2400A	2400	2	1200	350	42 <sup>11</sup> / <sub>16</sub> x 17 <sup>5</sup> / <sub>8</sub> x 22 <sup>1</sup> / <sub>16</sub>	16 <sup>3</sup> / <sub>8</sub> x 21 <sup>1</sup> / <sub>2</sub>	130	
	FVM4X3600A	3600	3	1400	415	53 <sup>7</sup> / <sub>16</sub> x 21 <sup>1</sup> / <sub>8</sub> x 22 <sup>1</sup> / <sub>16</sub>	19 <sup>7</sup> / <sub>8</sub> x 21 <sup>1</sup> / <sub>2</sub>	149	
	FVM4X4800A	4800	4	1600	425	53 <sup>7</sup> / <sub>16</sub> x 21 <sup>1</sup> / <sub>8</sub> x 22 <sup>1</sup> / <sub>16</sub>	19 <sup>7</sup> / <sub>8</sub> x 21 <sup>1</sup> / <sub>2</sub>	167	
	FVM4X6000A	6000	5	2000	540	59 <sup>3</sup> / <sub>16</sub> x 24 <sup>1</sup> / <sub>16</sub> x 22 <sup>1</sup> / <sub>16</sub>	23 <sup>5</sup> / <sub>16</sub> x 21 <sup>1</sup> / <sub>2</sub>	202	
R-22	FVM2X2400A	2400	2	1200	350	42 <sup>11</sup> / <sub>16</sub> x 17 <sup>5</sup> / <sub>8</sub> x 22 <sup>1</sup> / <sub>16</sub>	16 <sup>3</sup> / <sub>8</sub> x 21 <sup>1</sup> / <sub>2</sub>	130	
	FVM2X3600A	3600	3	1400	415	53 <sup>7</sup> / <sub>16</sub> x 21 <sup>1</sup> / <sub>8</sub> x 22 <sup>1</sup> / <sub>16</sub>	19 <sup>7</sup> / <sub>8</sub> x 21 <sup>1</sup> / <sub>2</sub>	149	
	FVM2X4800A	4800	4	1600	425	53 <sup>7</sup> / <sub>16</sub> x 21 <sup>1</sup> / <sub>8</sub> x 22 <sup>1</sup> / <sub>16</sub>	19 <sup>7</sup> / <sub>8</sub> x 21 <sup>1</sup> / <sub>2</sub>	167	
	FVM2X6000A	6000	5	2000	540	59 <sup>3</sup> / <sub>16</sub> x 24 <sup>1</sup> / <sub>16</sub> x 22 <sup>1</sup> / <sub>16</sub>	23 <sup>5</sup> / <sub>16</sub> x 21 <sup>1</sup> / <sub>2</sub>	202	

# FEM2, FEM4

## HIGH EFFICIENCY FAN COILS

**MULTIPOSITION INSTALLATION – UPFLOW OR HORIZONTAL LEFT STANDARD, HORIZONTAL RIGHT WITH MINOR MODIFICATION AND SEAL KIT**

**(Field convertible to downflow with available accessory kit)**

## R-22 or ENVIRONMENTALLY SOUND R-410A SYSTEMS

**1½ THRU 5 TONS**

### FEATURES

- High Efficiency, 3-speed, GE X-13 Motor (Brushless Permanent Magnet “BPM”, Electronically Commutated Motor “ECM”) on all models
- TXV metering device factory installed
- Copper tube / aluminum fin coil
- Sweat connections
- Primary and secondary drain fittings with brass inserts
- 5 amp automotive type fuse on control board
- Multiple electrical entry locations
- Time delay relay (TDR)
- Air filter factory supplied with all models
- Field installed heater packages from 5 kW– 30 kW available separately
- Units tested and certified by manufacturer to achieve a 2% or less leakage rate at 1.0 inch water column
- 1 inch thick insulation with R value of 4.2
- HUD approved for manufactured housing
- 208/230–1–60 supply voltage
- 7 year limited coil warranty (FEM4)  
5 year limited coil warranty (FEM2)
- 5 year limited parts warranty



Rated in accordance with ARI Standard 210 and/or 240. Certification applies only when used with proper components as listed with ARI.



	Model	Tons	Nominal CFM	Motor HP	Dimensions H x W x D (in)	Filter Size (in)	Ship Weight	Price
R-410A	FEM4X1800A	1½	600	1/3	42 <sup>11</sup> / <sub>16</sub> x 14 <sup>5</sup> / <sub>16</sub> x 22 <sup>7</sup> / <sub>8</sub>	13 x 21½	100 lbs	
	FEM4X2400A	2	800	1/3	47 <sup>11</sup> / <sub>16</sub> x 17 <sup>7</sup> / <sub>8</sub> x 22 <sup>7</sup> / <sub>8</sub>	16 <sup>3</sup> / <sub>8</sub> x 21½	117 lbs	
	FEM4X3000A	2½	1000	1/3	49 <sup>5</sup> / <sub>8</sub> x 17 <sup>7</sup> / <sub>8</sub> x 22 <sup>7</sup> / <sub>8</sub>	16 <sup>3</sup> / <sub>8</sub> x 21½	122 lbs	
	FEM4X3600A	3	1200	1/2	49 <sup>5</sup> / <sub>8</sub> x 21 <sup>1</sup> / <sub>8</sub> x 22 <sup>7</sup> / <sub>8</sub>	19 <sup>7</sup> / <sub>8</sub> x 21½	150 lbs	
	FEM4X4200A	3½	1400	1/2	49 <sup>5</sup> / <sub>8</sub> x 21 <sup>1</sup> / <sub>8</sub> x 22 <sup>7</sup> / <sub>8</sub>	19 <sup>7</sup> / <sub>8</sub> x 21½	150 lbs	
	FEM4X4800A	4	1600	3/4	53 <sup>7</sup> / <sub>16</sub> x 21 <sup>1</sup> / <sub>8</sub> x 22 <sup>7</sup> / <sub>8</sub>	19 <sup>7</sup> / <sub>8</sub> x 21½	170 lbs	
	FEM4X6000A	5	2000	3/4	59 <sup>3</sup> / <sub>16</sub> x 24 <sup>1</sup> / <sub>16</sub> x 22 <sup>7</sup> / <sub>8</sub>	23 <sup>5</sup> / <sub>16</sub> x 21½	198 lbs	
R-22	FEM2X1800A	1½	600	1/3	42 <sup>11</sup> / <sub>16</sub> x 14 <sup>5</sup> / <sub>16</sub> x 22 <sup>7</sup> / <sub>8</sub>	13 x 21½	100 lbs	
	FEM2X2400A	2	800	1/3	47 <sup>11</sup> / <sub>16</sub> x 17 <sup>7</sup> / <sub>8</sub> x 22 <sup>7</sup> / <sub>8</sub>	16 <sup>3</sup> / <sub>8</sub> x 21½	117 lbs	
	FEM2X3000A	2½	1000	1/3	49 <sup>5</sup> / <sub>8</sub> x 17 <sup>7</sup> / <sub>8</sub> x 22 <sup>7</sup> / <sub>8</sub>	16 <sup>3</sup> / <sub>8</sub> x 21½	122 lbs	
	FEM2X3500A	3	1200	1/2	53 <sup>7</sup> / <sub>16</sub> x 21 <sup>1</sup> / <sub>8</sub> x 22 <sup>7</sup> / <sub>8</sub>	19 <sup>7</sup> / <sub>8</sub> x 21½	144 lbs	
	FEM2X3600A	3	1200	1/2	49 <sup>5</sup> / <sub>8</sub> x 21 <sup>1</sup> / <sub>8</sub> x 22 <sup>7</sup> / <sub>8</sub>	19 <sup>7</sup> / <sub>8</sub> x 21½	150 lbs	
	FEM2X4200A	3½	1400	1/2	49 <sup>5</sup> / <sub>8</sub> x 21 <sup>1</sup> / <sub>8</sub> x 22 <sup>7</sup> / <sub>8</sub>	19 <sup>7</sup> / <sub>8</sub> x 21½	150 lbs	
	FEM2X4800A	4	1600	3/4	53 <sup>7</sup> / <sub>16</sub> x 21 <sup>1</sup> / <sub>8</sub> x 22 <sup>7</sup> / <sub>8</sub>	19 <sup>7</sup> / <sub>8</sub> x 21½	170 lbs	
	FEM2X6000A	5	2000	3/4	59 <sup>3</sup> / <sub>16</sub> x 24 <sup>1</sup> / <sub>16</sub> x 22 <sup>7</sup> / <sub>8</sub>	23 <sup>5</sup> / <sub>16</sub> x 21½	198 lbs	

Specifications subject to change without notice.

# FSM2, FSM4

## FAN COILS

**MULTIPOSITION INSTALLATION – UPFLOW OR HORIZONTAL LEFT STANDARD, HORIZONTAL RIGHT WITH MINOR MODIFICATION AND SEAL KIT**

**(Field convertible to downflow with available accessory kit)**

**R-22 or ENVIRONMENTALLY SOUND R-410A SYSTEMS**

**1½ THRU 5 TONS**

### FEATURES

- PSC 3-speed motor on all models
- TXV metering device factory installed
- Copper tube / aluminum fin coil
- Sweat connections
- Primary and secondary drain fittings with brass inserts
- 5 amp automotive type fuse on control board
- Multiple electrical entry locations
- Time delay relay (TDR)
- Air filter factory supplied with all models
- Field installed heater packages from 5 kW – 30 kW available separately
- Units tested and certified by manufacturer to achieve a 2% or less leakage rate at 1.0 inch water column
- 1 inch thick insulation with R value of 4.2
- HUD approved for manufactured housing
- 208/230–1–60 supply voltage
- 5 year limited coil and parts warranties



Rated in accordance with ARI Standard 210 and/or 240. Certification applies only when used with proper components as listed with ARI.

	Model	Tons	Nominal CFM	Motor HP	Dimensions H x W x D (in)	Filter Size (in)	Ship Weight	Price
R-410A	FSM4X1800A	1½	600	1/4	42 <sup>11</sup> / <sub>16</sub> x 14 <sup>5</sup> / <sub>16</sub> x 22 <sup>1</sup> / <sub>8</sub>	13 x 21½	100 lbs	
	FSM4X2400A	2	800	1/4	47 <sup>11</sup> / <sub>16</sub> x 17 <sup>7</sup> / <sub>8</sub> x 22 <sup>1</sup> / <sub>8</sub>	16 <sup>3</sup> / <sub>8</sub> x 21½	117 lbs	
	FSM4X3000A	2½	1000	1/4	47 <sup>11</sup> / <sub>16</sub> x 17 <sup>7</sup> / <sub>8</sub> x 22 <sup>1</sup> / <sub>8</sub>	16 <sup>3</sup> / <sub>8</sub> x 21½	120 lbs	
	FSM4X3600A	3	1200	1/3	49 <sup>5</sup> / <sub>8</sub> x 21 <sup>1</sup> / <sub>8</sub> x 22 <sup>1</sup> / <sub>8</sub>	19 <sup>7</sup> / <sub>8</sub> x 21½	150 lbs	
	FSM4X4200A	3½	1400	1/2	49 <sup>5</sup> / <sub>8</sub> x 21 <sup>1</sup> / <sub>8</sub> x 22 <sup>1</sup> / <sub>8</sub>	19 <sup>7</sup> / <sub>8</sub> x 21½	150 lbs	
	FSM4X4800A	4	1600	3/4	53 <sup>7</sup> / <sub>16</sub> x 21 <sup>1</sup> / <sub>8</sub> x 22 <sup>1</sup> / <sub>8</sub>	19 <sup>7</sup> / <sub>8</sub> x 21½	170 lbs	
	FSM4X6000A	5	2000	3/4	59 <sup>3</sup> / <sub>16</sub> x 24 <sup>11</sup> / <sub>16</sub> x 22 <sup>1</sup> / <sub>8</sub>	23 <sup>5</sup> / <sub>16</sub> x 21½	198 lbs	
R-22	FSM2X1800A	1½	600	1/4	42 <sup>11</sup> / <sub>16</sub> x 14 <sup>5</sup> / <sub>16</sub> x 22 <sup>1</sup> / <sub>8</sub>	13 x 21½	100 lbs	
	FSM2X2400A	2	800	1/4	47 <sup>11</sup> / <sub>16</sub> x 17 <sup>7</sup> / <sub>8</sub> x 22 <sup>1</sup> / <sub>8</sub>	16 <sup>3</sup> / <sub>8</sub> x 21½	117 lbs	
	FSM2X3000A	2½	1000	1/4	47 <sup>11</sup> / <sub>16</sub> x 17 <sup>7</sup> / <sub>8</sub> x 22 <sup>1</sup> / <sub>8</sub>	16 <sup>3</sup> / <sub>8</sub> x 21½	120 lbs	
	FSM2X3600A	3	1200	1/3	49 <sup>5</sup> / <sub>8</sub> x 21 <sup>1</sup> / <sub>8</sub> x 22 <sup>1</sup> / <sub>8</sub>	19 <sup>7</sup> / <sub>8</sub> x 21½	150 lbs	
	FSM2X4200A	3½	1400	1/2	49 <sup>5</sup> / <sub>8</sub> x 21 <sup>1</sup> / <sub>8</sub> x 22 <sup>1</sup> / <sub>8</sub>	19 <sup>7</sup> / <sub>8</sub> x 21½	150 lbs	
	FSM2X4800A	4	1600	3/4	53 <sup>7</sup> / <sub>16</sub> x 21 <sup>1</sup> / <sub>8</sub> x 22 <sup>1</sup> / <sub>8</sub>	19 <sup>7</sup> / <sub>8</sub> x 21½	170 lbs	
	FSM2X6000A	5	2000	3/4	59 <sup>3</sup> / <sub>16</sub> x 24 <sup>11</sup> / <sub>16</sub> x 22 <sup>1</sup> / <sub>8</sub>	23 <sup>5</sup> / <sub>16</sub> x 21½	198 lbs	

# FSU2, FSU4

## FAN COILS

### UPFLOW INSTALLATION

(Field convertible to horizontal or downflow with available accessory kits)

### R-22 or ENVIRONMENTALLY SOUND R-410A SYSTEMS

#### 1½ THRU 5 TONS

#### FEATURES

- PSC 2-speed motor (1½ – 3 ton sizes) and PSC 3-speed motor (3½ – 5 ton sizes)
- TXV metering device factory installed
- Copper tube / aluminum fin coil
- Sweat connections
- Primary and secondary drain fittings with brass inserts
- 5 amp automotive type fuse on control board
- Multiple electrical entry locations
- Time delay relay (TDR)
- Filter available as accessory
- Field installed heater packages from 5 kW – 30 kW available separately
- Units tested and certified by manufacturer to achieve a 2% or less leakage rate at 1.0 inch water column
- 1 inch thick insulation with R value of 4.2
- HUD approved for manufactured housing
- 208/230–1–60 supply voltage
- 5 year limited coil and parts warranties



Rated in accordance with ARI Standard 210 and/or 240. Certification applies only when used with proper components as listed with ARI.

	Model	Tons	Nominal CFM	Motor HP	Dimensions H x W x D (in)	Filter Size (in)	Ship Weight	Price
R-410A	FSU4X1800A	1½	600	1/4	42 <sup>11</sup> / <sub>16</sub> x 14 <sup>5</sup> / <sub>16</sub> x 22 <sup>1</sup> / <sub>8</sub>	13 x 21½	98 lbs	
	FSU4X2400A	2	800	1/4	47 <sup>11</sup> / <sub>16</sub> x 17 <sup>7</sup> / <sub>8</sub> x 22 <sup>1</sup> / <sub>8</sub>	16 <sup>3</sup> / <sub>8</sub> x 21½	115 lbs	
	FSU4X3000A	2½	1000	1/4	47 <sup>11</sup> / <sub>16</sub> x 17 <sup>7</sup> / <sub>8</sub> x 22 <sup>1</sup> / <sub>8</sub>	16 <sup>3</sup> / <sub>8</sub> x 21½	118 lbs	
	FSU4X3600A	3	1200	1/3	53 <sup>7</sup> / <sub>16</sub> x 21 <sup>1</sup> / <sub>8</sub> x 22 <sup>1</sup> / <sub>8</sub>	19 <sup>7</sup> / <sub>8</sub> x 21½	138 lbs	
	FSU4X4200A	3½	1400	1/2	49 <sup>5</sup> / <sub>8</sub> x 21 <sup>1</sup> / <sub>8</sub> x 22 <sup>1</sup> / <sub>8</sub>	19 <sup>7</sup> / <sub>8</sub> x 21½	147 lbs	
	FSU4X4800A	4	1600	3/4	53 <sup>7</sup> / <sub>16</sub> x 21 <sup>1</sup> / <sub>8</sub> x 22 <sup>1</sup> / <sub>8</sub>	19 <sup>7</sup> / <sub>8</sub> x 21½	163 lbs	
	FSU4X6000A	5	2000	3/4	59 <sup>3</sup> / <sub>16</sub> x 24 <sup>11</sup> / <sub>16</sub> x 22 <sup>1</sup> / <sub>8</sub>	23 <sup>5</sup> / <sub>16</sub> x 21½	193 lbs	
R-22	FSU2X1800A	1½	600	1/4	42 <sup>11</sup> / <sub>16</sub> x 14 <sup>5</sup> / <sub>16</sub> x 22 <sup>1</sup> / <sub>8</sub>	13 x 21½	98 lbs	
	FSU2X2400A	2	800	1/4	47 <sup>11</sup> / <sub>16</sub> x 17 <sup>7</sup> / <sub>8</sub> x 22 <sup>1</sup> / <sub>8</sub>	16 <sup>3</sup> / <sub>8</sub> x 21½	115 lbs	
	FSU2X3000A	2½	1000	1/4	47 <sup>11</sup> / <sub>16</sub> x 17 <sup>7</sup> / <sub>8</sub> x 22 <sup>1</sup> / <sub>8</sub>	16 <sup>3</sup> / <sub>8</sub> x 21½	118 lbs	
	FSU2X3600A	3	1200	1/3	53 <sup>7</sup> / <sub>16</sub> x 21 <sup>1</sup> / <sub>8</sub> x 22 <sup>1</sup> / <sub>8</sub>	19 <sup>7</sup> / <sub>8</sub> x 21½	138 lbs	
	FSU2X4200A	3½	1400	1/2	49 <sup>5</sup> / <sub>8</sub> x 21 <sup>1</sup> / <sub>8</sub> x 22 <sup>1</sup> / <sub>8</sub>	19 <sup>7</sup> / <sub>8</sub> x 21½	147 lbs	
	FSU2X4800A	4	1600	3/4	53 <sup>7</sup> / <sub>16</sub> x 21 <sup>1</sup> / <sub>8</sub> x 22 <sup>1</sup> / <sub>8</sub>	19 <sup>7</sup> / <sub>8</sub> x 21½	163 lbs	
	FSU2X6000A	5	2000	3/4	59 <sup>3</sup> / <sub>16</sub> x 24 <sup>11</sup> / <sub>16</sub> x 22 <sup>1</sup> / <sub>8</sub>	23 <sup>5</sup> / <sub>16</sub> x 21½	193 lbs	

Specifications subject to change without notice.

## APARTMENT FAN COILS

**AVAILABLE WITH FACTORY INSTALLED 5, 7, & 11 kW ELECTRIC HEAT, or NO HEAT**

### R-22 SYSTEMS

**1½ THRU 3 TONS**

#### FEATURES

- TXV metering device factory installed on all models
- Upflow only
- 22" wide galvanized steel cabinet fits between studs (24" stud spacing)
- All electrical and refrigerant lines enter through top of cabinet
- Service access through front of cabinet
- Primary and secondary drain fittings exit bottom, left, or right side of cabinet
- Air filter factory supplied with all models
- Copper tube / aluminum fin coil
- Sweat connections
- 5 amp automotive type fuse on control board
- Time delay relay (TDR)
- Wall-hung kit available as accessory
- Decorative grille available as accessory
- Field installed electric heater packages from 5 kW – 11 kW available separately
- 208/230–1–60 supply voltage
- 5 year limited coil and parts warranties



Rated in accordance with ARI Standard 210 and/or 240. Certification applies only when used with proper components as listed with ARI.



Model	Tons	Heat (kW)	Nominal CFM	Motor HP	Dimensions H x W x D (in)	Filter Size (in)	Ship Weight	Price
FSA2X1800A	1½	none	600	1/5	38½ x 22½ x 15¾	16 x 20 x 1	85 lbs	
FSA2X1805A	1½	5	600	1/5	38½ x 22½ x 15¾	16 x 20 x 1	90 lbs	
FSA2X1807A	1½	7	600	1/5	38½ x 22½ x 15¾	16 x 20 x 1	90 lbs	
FSA2X1811A	1½	11	600	1/5	38½ x 22½ x 15¾	16 x 20 x 1	90 lbs	
FSA2X2400A	2	none	800	1/5	38½ x 22½ x 15¾	16 x 20 x 1	87 lbs	
FSA2X2405A	2	5	800	1/5	38½ x 22½ x 15¾	16 x 20 x 1	92 lbs	
FSA2X2407A	2	7	800	1/5	38½ x 22½ x 15¾	16 x 20 x 1	92 lbs	
FSA2X2411A	2	11	800	1/5	38½ x 22½ x 15¾	16 x 20 x 1	92 lbs	
FSA2X3000A	2½	none	1000	1/3	38½ x 22½ x 15¾	16 x 20 x 1	90 lbs	
FSA2X3005A	2½	5	1000	1/3	38½ x 22½ x 15¾	16 x 20 x 1	95 lbs	
FSA2X3007A	2½	7	1000	1/3	38½ x 22½ x 15¾	16 x 20 x 1	95 lbs	
FSA2X3011A	2½	11	1000	1/3	38½ x 22½ x 15¾	16 x 20 x 1	95 lbs	
FSA2X3600A	3	none	1200	1/3	43¾ x 22½ x 18¾	20 x 20 x 1	105 lbs	
FSA2X3605A	3	5	1200	1/3	43¾ x 22½ x 18¾	20 x 20 x 1	110 lbs	
FSA2X3607A	3	7	1200	1/3	43¾ x 22½ x 18¾	20 x 20 x 1	110 lbs	
FSA2X3611A	3	11	1200	1/3	43¾ x 22½ x 18¾	20 x 20 x 1	110 lbs	

Specifications subject to change without notice.



## APARTMENT FAN COILS

AVAILABLE WITH FACTORY INSTALLED 5, 7, & 11 kW ELECTRIC HEAT,  
or NO HEAT

### R-410A SYSTEMS

1½ THRU 3 TONS

#### FEATURES

- TXV metering device factory installed on all models
- Upflow only
- 22" wide galvanized steel cabinet fits between studs (24" stud spacing)
- All electrical and refrigerant lines enter through top of cabinet
- Service access through front of cabinet
- Primary and secondary drain fittings exit bottom, left, or right side of cabinet
- Air filter factory supplied with all models
- Copper tube / aluminum fin coil
- Sweat connections
- 5 amp automotive type fuse on control board
- Time delay relay (TDR)
- Wall-hung kit available as accessory
- Decorative grille available as accessory
- Field installed electric heater packages from 5 kW – 11 kW available separately
- Units tested and certified by manufacturer to achieve a 2% or less leakage rate at 1.0 inch water column
- 208/230–1–60 supply voltage
- 5 year limited coil and parts warranties



Rated in accordance with ARI Standard 210 and/or 240. Certification applies only when used with proper components as listed with ARI.

Model	Tons	Heat (kW)	Nominal CFM	Motor HP	Dimensions H x W x D (in)	Filter Size (in)	Ship Weight	Price
FSA4X1800A	1½	none	600	1/5	38½ x 22½ x 15¾	16 x 20 x 1	85 lbs	
FSA4X1805A	1½	5	600	1/5	38½ x 22½ x 15¾	16 x 20 x 1	90 lbs	
FSA4X1807A	1½	7	600	1/5	38½ x 22½ x 15¾	16 x 20 x 1	90 lbs	
FSA4X1811A	1½	11	600	1/5	38½ x 22½ x 15¾	16 x 20 x 1	90 lbs	
FSA4X2400A	2	none	800	1/5	38½ x 22½ x 15¾	16 x 20 x 1	87 lbs	
FSA4X2405A	2	5	800	1/5	38½ x 22½ x 15¾	16 x 20 x 1	92 lbs	
FSA4X2407A	2	7	800	1/5	38½ x 22½ x 15¾	16 x 20 x 1	92 lbs	
FSA4X2411A	2	11	800	1/5	38½ x 22½ x 15¾	16 x 20 x 1	92 lbs	
FSA4X3000A	2½	none	1000	1/3	38½ x 22½ x 15¾	16 x 20 x 1	90 lbs	
FSA4X3005A	2½	5	1000	1/3	38½ x 22½ x 15¾	16 x 20 x 1	95 lbs	
FSA4X3007A	2½	7	1000	1/3	38½ x 22½ x 15¾	16 x 20 x 1	95 lbs	
FSA4X3011A	2½	11	1000	1/3	38½ x 22½ x 15¾	16 x 20 x 1	95 lbs	
FSA4X3600A	3	none	1200	1/3	43¾ x 22½ x 18¾	20 x 20 x 1	105 lbs	
FSA4X3605A	3	5	1200	1/3	43¾ x 22½ x 18¾	20 x 20 x 1	110 lbs	
FSA4X3607A	3	7	1200	1/3	43¾ x 22½ x 18¾	20 x 20 x 1	110 lbs	
FSA4X3611A	3	11	1200	1/3	43¾ x 22½ x 18¾	20 x 20 x 1	110 lbs	

# Accessories

## Fan Coils

FSU, FSM, FEM, FVM					
Part Number	Description	Use with Model Sizes			Price
		FSU	FSM & FEM	FVM	
EBAC01DSC	Disconnect Kit	use with All Heaters 5 kW thru 10 kW			
EBAC01NCB	Downflow Base Kit	18	18	–	
EBAC02NCB		24, 30	24, 30	24	
EBAC03NCB		36, 42, 48	35, 36, 42, 48	36, 48	
EBAC04NCB		60	60	60	
EBAC01DFS	Downflow Conversion Kit – Slope Coil	18, 24, 30, 36	18, 24, 30, 35	36	
EBAC02DFA	Downflow Conversion Kit – A-Coil	42, 48, 60	36, 42, 48, 60	24, 48, 60	
EBAC01SPK	Single Point Wiring Kit	only for use with 15 kW & 20 kW fused heaters			
Single Point Wiring Kit – Square D® Jumper Bar Assembly	QOU14100JBAF (Available through Square D only)	ALL – Only for use with EHK15AKB and EHK20AKB breaker heaters			
EBAC01FKS	Permanent Filter Kit (box of 12)	18	18	–	
EBAC01FKM		24, 30	24, 30	24	
EBAC01FKL		36, 42, 48	35, 36, 42, 48	36, 48	
EBAC01FKX		60	60	60	
EBAC01PLG	No Heat (Plug) Kit (box of 6)	ALL	ALL	ALL (Factory Installed)	
EBAC01CTK	PVC Condensate Trap (box of 50)	ALL	ALL	ALL	
EBAC01GSK	Horizontal Gasket Kit	ALL	ALL (required for horizontal right and downflow)	ALL (required for horizontal right only)	
EBAC01DPK	Horizontal Drainpan Kit Slope Coil	18	Not Required (Factory Installed)	Not Required (Factory Installed)	
EBAC02DPK		24, 30			
EBAC03DPK		36			
EBAC04DPK	Horizontal Drainpan Kit A-Coil	42			
EBAC05DPK		48			
EBAC06DPK		60			
AMF153TKB	TXV Kit, R-22	18, 24, 30, 36	18, 24, 30, 36	24, 36	
AMF355TKB	TXV Kit, R-22	42, 48, 60	42, 48, 60	48,60	
EBAC05TXVX	TXV Kit, R-410A	18, 24, 30	18, 24, 30	24	
EBAC06TXVX	TXV Kit, R-410A	36, 42	36, 42	36	
EBAC07TXVX	TXV Kit, R-410A	48, 60	48, 60	48,60	

# Accessories

## Fan Coils (continued)

FSA		
Part Number	Description	Price
AMWK001CK	Cooling Control Kit	
AMWK001WG	Louvered Wall Panel with Frame for model sizes 18, 24, 30 (package of 6)	
AMWK002WG	Louvered Wall Panel with Frame for model size 36 (package of 6)	
AMWK001MK	Wall Mounting (Suspended) Brackets Kit	

ELECTRIC HEATERS for FVM, FSU, FSM, FEM			
Part Number	Description	Use with Model Sizes	Price
EHK05AKN	5 kW, single phase, no internal circuit protection	ALL	
EHK05AKB	5 kW, single phase, with circuit breakers	ALL	
EHK07AKN	8 kW, single phase, no internal circuit protection	ALL	
EHK07AKB	8 kW, single phase, with circuit breakers	ALL	
EHK09AKCN	9 kW, supplied as single phase, field convertible to 3-phase, no internal circuit protection	35, 36, 42, 48, 60	
EHK10AKN	10 kW, single phase, no internal circuit protection	ALL	
EHK10AKB	10 kW, single phase, with circuit breakers	ALL	
EHK15AKF	15 kW, single phase, with fuses	24, 30, 35, 36, 42, 48, 60	
EHK15AKB	15 kW, single phase, with circuit breakers	24, 30, 35, 36, 42, 48, 60	
EHK15AHN	15 kW, 3-phase, no internal circuit protection	35, 36, 42, 48, 60	
EHK18AHN	18 kW, 3-phase, no internal circuit protection	42, 48, 60	
EHK20AKF	20 kW, single phase, with fuses	30, 35, 36, 42, 48, 60	
EHK20AKB	20 kW, single phase, with circuit breakers	30, 35, 36, 42, 48, 60	
EHK25AHCF	24 kW, supplied as 3-phase, field convertible to single phase, with fuses	48, 60	
EHK30AHCF	30 kW, supplied as 3-phase, field convertible to single phase, with fuses	48, 60	

ELECTRIC HEATERS for FSA			
Part Number	Description	Use with Model Sizes	Price
AMWK005AH	5 kW, single phase, 208 / 230V, 60 Hz	ALL	
AMWK007AH	7 kW, single phase, 208 / 230V, 60 Hz	ALL	
AMWK011AH	11 kW, single phase, 208 / 230V, 60 Hz	ALL	

# MODEL NUMBER IDENTIFICATION

## Furnace Coils

COIL MODEL NUMBER IDENTIFICATION GUIDE													
	E	D	M	2	X	18	B	A	1				
E = Evaporator		D = Deluxe B = Builder (Value Line)	M = Cased, Multiposition D = Cased Upflow / Downflow U = Cased Upflow Only A = Uncased	2 = R-22 4 = Environmentally Sound R-410A	X = TXV	18 = 18,000 BTUH = 1½ tons 24 = 24,000 BTUH = 2 tons 30 = 30,000 BTUH = 2½ tons 36 = 36,000 BTUH = 3 tons 42 = 42,000 BTUH = 3½ tons 48 = 48,000 BTUH = 4 tons 60 = 60,000 BTUH = 5 tons	B = 15.5” F = 19.1” J = 22.8” L = 24.5”	A = Standard AT = Tin Coated Copper Tubes for Additional Corrosion Protection	1				
										TYPE			
										APPLICATION			
		REFRIGERANT											
		METERING DEVICE											
		NOMINAL CAPACITY											
		WIDTH (matches furnace)											
		SALES CODE / FEATURES											
Engineering Revision													

## CASED COILS

### MULTIPOISE INSTALLATION – UPFLOW, DOWNFLOW, OR HORIZONTAL ENVIRONMENTALLY SOUND R-410A SYSTEMS

1½ THRU 5 TONS

#### CABINET FEATURES

- Upflow cabinet widths and horizontal cabinet depths match flush with ICP gas furnaces
- Removable front access panel
- Easy slide-out coil for inspection
- Two UV light knock-outs provided on cabinet
- Hemmed flanges for safer handling
- Foil faced insulation
- Non-sweat cabinet, even at extreme conditions
- Cabinets meet or exceed 2% air leakage codes
- Sturdy, 22 gauge, pre-painted steel cabinet

#### COIL FEATURES

- Copper tube / aluminum fin “A” coil with latest high-tech fin design
- Bolt-on TXV metering device factory installed on all models (equalizer tube brazed in)
- TXV and manifold positioned to the side for easier cleaning
- Innovative drain pan design for complete water removal
- Two condensate drain connections
- 2-piece delta plate for easier removal and cleaning

#### AVAILABLE WITH TIN COATED COPPER TUBING

- Model numbers ending in “AT” have industry exclusive tin coated copper main tubing for additional corrosion protection

#### WARRANTY

- 10 year limited coil warranty (“AT” tin coated models)
- 5 year limited coil warranty (standard models)
- 5 year limited parts warranty



Model	Size (tons)	Dimensions H x W x D (in)	Price
EDM4X18BA	1½	26⅞ x 15¾ x 20⅝	
18BAT		Tin Coated Copper	
EDM4X24BA	2	26⅞ x 15¾ x 20⅝	
24BAT		Tin Coated Copper	
EDM4X24FA	2	26⅞ x 19⅜ x 20⅝	
24FAT		Tin Coated Copper	
EDM4X30BA	2½	26⅞ x 15¾ x 20⅝	
30BAT		Tin Coated Copper	
EDM4X30FA	2½	26⅞ x 19⅜ x 20⅝	
30FAT		Tin Coated Copper	
EDM4X36BA	3	30⅝ x 15¾ x 20⅝	
36BAT		Tin Coated Copper	
EDM4X36FA	3	30⅝ x 19⅜ x 20⅝	
36FAT		Tin Coated Copper	
EDM4X36JA	3	30⅝ x 23 x 20⅝	
36JAT		Tin Coated Copper	
EDM4X42JA	3½	30⅝ x 23 x 20⅝	
42JAT		Tin Coated Copper	
EDM4X42LA	3½	30⅝ x 24⅝ x 20⅝	
42LAT		Tin Coated Copper	
EDM4X48FA	4	35⅞ x 19⅜ x 20⅝	
48FAT		Tin Coated Copper	
EDM4X48JA	4	30⅝ x 23 x 20⅝	
48JAT		Tin Coated Copper	
EDM4X48LA	4	30⅝ x 24⅝ x 20⅝	
48LAT		Tin Coated Copper	
EDM4X60JA	5	35⅞ x 23 x 20⅝	
60JAT		Tin Coated Copper	
EDM4X60LA	5	35⅞ x 24⅝ x 20⅝	
60LAT		Tin Coated Copper	



Rated in accordance with ARI Standard 210 and/or 240. Certification applies only when used with proper components as listed with ARI.



## CASED COILS

### MULTIPOISE INSTALLATION – UPFLOW, DOWNFLOW, OR HORIZONTAL R-22 SYSTEMS

1½ THRU 5 TONS

#### CABINET FEATURES

- Upflow cabinet widths and horizontal cabinet depths match flush with ICP gas furnaces
- Removable front access panel
- Easy slide-out coil for inspection
- Two UV light knock-outs provided on cabinet
- Hemmed flanges for safer handling
- Foil faced insulation
- Non-sweat cabinet, even at extreme conditions
- Cabinets meet or exceed 2% air leakage codes
- Sturdy, 22 gauge, pre-painted steel cabinet

#### COIL FEATURES

- Copper tube / aluminum fin “A” coil with latest high-tech fin design
- Bolt-on TXV metering device factory installed on all models (equalizer tube brazed in)
- TXV and manifold positioned to the side for easier cleaning
- Innovative drain pan design for complete water removal
- Two condensate drain connections
- 2-piece delta plate for easier removal and cleaning

#### AVAILABLE WITH TIN COATED COPPER TUBING

- Model numbers ending in “AT” have industry exclusive tin coated copper main tubing for additional corrosion protection

#### WARRANTY

- 10 year limited coil warranty (“AT” tin coated models)
- 5 year limited coil warranty (standard models)
- 5 year limited parts warranty



Model	Size (tons)	Dimensions H x W x D (in)	Price
EDM2X18BA	1½	26⅞ x 15¾ x 20⅝	
18BAT		Tin Coated Copper	
EDM2X24BA	2	26⅞ x 15¾ x 20⅝	
24BAT		Tin Coated Copper	
EDM2X24FA	2	26⅞ x 19⅜ x 20⅝	
24FAT		Tin Coated Copper	
EDM2X30BA	2½	26⅞ x 15¾ x 20⅝	
30BAT		Tin Coated Copper	
EDM2X30FA	2½	26⅞ x 19⅜ x 20⅝	
30FAT		Tin Coated Copper	
EDM2X36BA	3	30⅝ x 15¾ x 20⅝	
36BAT		Tin Coated Copper	
EDM2X36FA	3	30⅝ x 19⅜ x 20⅝	
36FAT		Tin Coated Copper	
EDM2X36JA	3	30⅝ x 23 x 20⅝	
36JAT		Tin Coated Copper	
EDM2X42JA	3½	30⅝ x 23 x 20⅝	
42JAT		Tin Coated Copper	
EDM2X42LA	3½	30⅝ x 24⅝ x 20⅝	
42LAT		Tin Coated Copper	
EDM2X48FA	4	35⅞ x 19⅜ x 20⅝	
48FAT		Tin Coated Copper	
EDM2X48JA	4	30⅝ x 23 x 20⅝	
48JAT		Tin Coated Copper	
EDM2X48LA	4	30⅝ x 24⅝ x 20⅝	
48LAT		Tin Coated Copper	
EDM2X60JA	5	35⅞ x 23 x 20⅝	
60JAT		Tin Coated Copper	
EDM2X60LA	5	35⅞ x 24⅝ x 20⅝	
60LAT		Tin Coated Copper	



Rated in accordance with ARI Standard 210 and/or 240. Certification applies only when used with proper components as listed with ARI.



## CASED COILS

## UPFLOW OR DOWNFLOW INSTALLATION

## ENVIRONMENTALLY SOUND R-410A SYSTEMS

### 1½ THRU 5 TONS

#### CABINET FEATURES

- Cabinet widths match flush with ICP gas furnaces
- Removable front access panel
- Easy slide-out coil for inspection
- Two UV light knock-outs provided on cabinet
- Hemmed flanges for safer handling
- Foil faced insulation
- Non-sweat cabinet, even at extreme conditions
- Cabinets meet or exceed 2% air leakage codes
- Sturdy, 22 gauge, pre-painted steel cabinet

#### COIL FEATURES

- Copper tube / aluminum fin "A" coil with latest high-tech fin design
- Bolt-on TXV metering device factory installed on all models (equalizer tube brazed in)
- TXV and manifold positioned to the side for easier cleaning
- Innovative drain pan design for complete water removal
- Two condensate drain connections
- 2-piece delta plate for easier removal and cleaning

#### AVAILABLE WITH TIN COATED COPPER TUBING

- Model numbers ending in "AT" have industry exclusive tin coated copper main tubing for additional corrosion protection

#### WARRANTY

- 10 year limited coil warranty ("AT" tin coated models)
- 5 year limited coil warranty (standard models)
- 5 year limited parts warranty



Model	Size (tons)	Dimensions H x W x D (in)	Price
EDD4X18BA	1½	18⅞ x 15¾ x 20⅝	
18BAT		Tin Coated Copper	
EDD4X24BA	2	20⅞ x 15¾ x 20⅝	
24BAT		Tin Coated Copper	
EDD4X24FA	2	20⅞ x 19⅜ x 20⅝	
24FAT		Tin Coated Copper	
EDD4X30BA	2½	24¼ x 15¾ x 20⅝	
30BAT		Tin Coated Copper	
EDD4X30FA	2½	24¼ x 19⅜ x 20⅝	
30FAT		Tin Coated Copper	
EDD4X36BA	3	26⅞ x 15¾ x 20⅝	
36BAT		Tin Coated Copper	
EDD4X36FA	3	26⅞ x 19⅜ x 20⅝	
36FAT		Tin Coated Copper	
EDD4X36JA	3	26⅞ x 23 x 20⅝	
36JAT		Tin Coated Copper	
EDD4X42JA	3½	28⅞ x 23 x 20⅝	
42JAT		Tin Coated Copper	
EDD4X42LA	3½	28⅞ x 24⅝ x 20⅝	
42LAT		Tin Coated Copper	
EDD4X48FA	4	33⅞ x 19⅜ x 20⅝	
48FAT		Tin Coated Copper	
EDD4X48JA	4	28⅞ x 23 x 20⅝	
48JAT		Tin Coated Copper	
EDD4X48LA	4	28⅞ x 24⅝ x 20⅝	
48LAT		Tin Coated Copper	
EDD4X60JA	5	33⅞ x 23 x 20⅝	
60JAT		Tin Coated Copper	
EDD4X60LA	5	33⅞ x 24⅝ x 20⅝	
60LAT		Tin Coated Copper	



Rated in accordance with ARI Standard 210 and/or 240. Certification applies only when used with proper components as listed with ARI.



Specifications subject to change without notice.

## CASED COILS

### UPFLOW OR DOWNFLOW INSTALLATION

### R-22 SYSTEMS

### 1½ THRU 5 TONS

#### CABINET FEATURES

- Cabinet widths match flush with ICP gas furnaces
- Removable front access panel
- Easy slide-out coil for inspection
- Two UV light knock-outs provided on cabinet
- Hemmed flanges for safer handling
- Foil faced insulation
- Non-sweat cabinet, even at extreme conditions
- Cabinets meet or exceed 2% air leakage codes
- Sturdy, 22 gauge, pre-painted steel cabinet

#### COIL FEATURES

- Copper tube / aluminum fin “A” coil with latest high-tech fin design
- Bolt-on TXV metering device factory installed on all models (equalizer tube brazed in)
- TXV and manifold positioned to the side for easier cleaning
- Innovative drain pan design for complete water removal
- Two condensate drain connections
- 2-piece delta plate for easier removal and cleaning

#### AVAILABLE WITH TIN COATED COPPER TUBING

- Model numbers ending in “AT” have industry exclusive tin coated copper main tubing for additional corrosion protection

#### WARRANTY

- 10 year limited coil warranty (“AT” tin coated models)
- 5 year limited coil warranty (standard models)
- 5 year limited parts warranty



Model	Size (tons)	Dimensions H x W x D (in)	Price
EDD2X18BA	1½	18⅞ x 15¾ x 20⅝	
18BAT		Tin Coated Copper	
EDD2X24BA	2	20⅞ x 15¾ x 20⅝	
24BAT		Tin Coated Copper	
EDD2X24FA	2	20⅞ x 19⅜ x 20⅝	
24FAT		Tin Coated Copper	
EDD2X30BA	2½	24¼ x 15¾ x 20⅝	
30BAT		Tin Coated Copper	
EDD2X30FA	2½	24¼ x 19⅜ x 20⅝	
30FAT		Tin Coated Copper	
EDD2X36BA	3	26⅞ x 15¾ x 20⅝	
36BAT		Tin Coated Copper	
EDD2X36FA	3	26⅞ x 19⅜ x 20⅝	
36FAT		Tin Coated Copper	
EDD2X36JA	3	26⅞ x 23 x 20⅝	
36JAT		Tin Coated Copper	
EDD2X42JA	3½	28⅞ x 23 x 20⅝	
42JAT		Tin Coated Copper	
EDD2X42LA	3½	28⅞ x 24⅝ x 20⅝	
42LAT		Tin Coated Copper	
EDD2X48FA	4	33⅞ x 19⅜ x 20⅝	
48FAT		Tin Coated Copper	
EDD2X48JA	4	28⅞ x 23 x 20⅝	
48JAT		Tin Coated Copper	
EDD2X48LA	4	28⅞ x 24⅝ x 20⅝	
48LAT		Tin Coated Copper	
EDD2X60JA	5	33⅞ x 23 x 20⅝	
60JAT		Tin Coated Copper	
EDD2X60LA	5	33⅞ x 24⅝ x 20⅝	
60LAT		Tin Coated Copper	



Rated in accordance with ARI Standard 210 and/or 240. Certification applies only when used with proper components as listed with ARI.





## CASED COILS

### UPFLOW INSTALLATION

### R-22 SYSTEMS

### 1½ THRU 5 TONS

#### FEATURES

- Value Line
- Bolt-on TXV metering device factory installed on all models
- Copper tube / aluminum fin "A" coil
- Two condensate drain connections
- Cabinet widths match flush with ICP gas furnaces
- Removable front access panel
- Pre-painted steel cabinet

#### WARRANTY

- 5 year limited coil and parts warranties



Model	Size (tons)	Dimensions H x W x D (in)	Price
EBU2X18BA	1½	18⅞ x 15¾ x 20⅝	
EBU2X24BA	2	20⅞ x 15¾ x 20⅝	
EBU2X24FA	2	20⅞ x 19⅜ x 20⅝	
EBU2X30BA	2½	24¼ x 15¾ x 20⅝	
EBU2X30FA	2½	24¼ x 19⅜ x 20⅝	
EBU2X36BA	3	26⅞ x 15¾ x 20⅝	
EBU2X36FA	3	26⅞ x 19⅜ x 20⅝	
EBU2X36JA	3	26⅞ x 23 x 20⅝	
EBU2X42JA	3½	28⅞ x 23 x 20⅝	
EBU2X42LA	3½	28⅞ x 24⅝ x 20⅝	
EBU2X48FA	4	33⅞ x 19⅜ x 20⅝	
EBU2X48JA	4	28⅞ x 23 x 20⅝	
EBU2X48LA	4	28⅞ x 24⅝ x 20⅝	
EBU2X60JA	5	33⅞ x 23 x 20⅝	
EBU2X60LA	5	33⅞ x 24⅝ x 20⅝	



Rated in accordance with ARI Standard 210 and/or 240. Certification applies only when used with proper components as listed with ARI.



## A-COILS

### ENVIRONMENTALLY SOUND R-410A SYSTEMS

1½ THRU 5 TONS

#### FEATURES

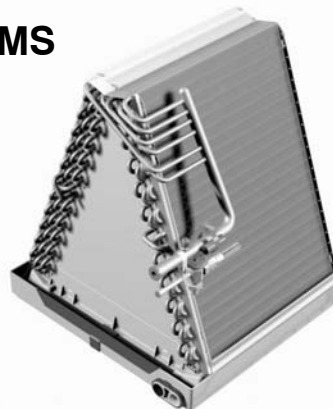
- Upflow or Downflow installation
- Copper tube / aluminum fin coil with latest high-tech fin design
- Bolt-on TXV metering device factory installed on all models (equalizer tube brazed in)
- TXV and manifold positioned to the side for easier cleaning
- Innovative drain pan design for complete water removal
- Two condensate drain connections
- 2-piece delta plate for easier removal and cleaning

#### AVAILABLE WITH TIN COATED COPPER TUBING

- Model numbers ending in "AT" have industry exclusive tin coated copper main tubing for additional corrosion protection

#### WARRANTY

- 10 year limited coil warranty ("AT" tin coated models)
- 5 year limited coil warranty (standard models)
- 5 year limited parts warranty



Model	Size (tons)	Dimensions H x W x D (in)	Price
EDA4X18BA	1½	13⅞ x 14⅞ x 20⅞	
18BAT		Tin Coated Copper	
EDA4X24BA	2	17⅞ x 14⅞ x 20⅞	
24BAT		Tin Coated Copper	
EDA4X24FA	2	16⅝ x 18⅞ x 20⅞	
24FAT		Tin Coated Copper	
EDA4X30BA	2½	21¾ x 14⅞ x 20⅞	
30BAT		Tin Coated Copper	
EDA4X30FA	2½	21⅜ x 18⅞ x 20⅞	
30FAT		Tin Coated Copper	
EDA4X36BA	3	23¾ x 14⅞ x 20⅞	
36BAT		Tin Coated Copper	
EDA4X36FA	3	23¼ x 18⅞ x 20⅞	
36FAT		Tin Coated Copper	
EDA4X36JA	3	22⅞ x 21⅞ x 20⅞	
36JAT		Tin Coated Copper	
EDA4X42JA	3½	24¾ x 21⅞ x 20⅞	
42JAT		Tin Coated Copper	
EDA4X42LA	3½	24½ x 23⅝ x 20⅞	
42LAT		Tin Coated Copper	
EDA4X48FA	4	29⅞ x 18⅞ x 20⅞	
48FAT		Tin Coated Copper	
EDA4X48JA	4	25⅞ x 21⅞ x 20⅞	
48JAT		Tin Coated Copper	
EDA4X48LA	4	24⅞ x 23⅝ x 20⅞	
48LAT		Tin Coated Copper	
EDA4X60JA	5	31⅝ x 21⅞ x 20⅞	
60JAT		Tin Coated Copper	
EDA4X60LA	5	31⅞ x 23⅝ x 20⅞	
60LAT		Tin Coated Copper	



Rated in accordance with ARI Standard 210 and/or 240. Certification applies only when used with proper components as listed with ARI.



## A-COILS

### R-22 SYSTEMS

### 1½ THRU 5 TONS

#### FEATURES

- Upflow or Downflow installation
- Copper tube / aluminum fin coil with latest high-tech fin design
- Bolt-on TXV metering device factory installed on all models (equalizer tube brazed in)
- TXV and manifold positioned to the side for easier cleaning
- Innovative drain pan design for complete water removal
- Two condensate drain connections
- 2-piece delta plate for easier removal and cleaning

#### AVAILABLE WITH TIN COATED COPPER TUBING

- Model numbers ending in "AT" have industry exclusive tin coated copper main tubing for additional corrosion protection

#### WARRANTY

- 10 year limited coil warranty ("AT" tin coated models)
- 5 year limited coil warranty (standard models)
- 5 year limited parts warranty



Model	Size (tons)	Dimensions H x W x D (in)	Price
EDA2X18BA	1½	13⅞ x 14⅞ x 20⅞	
18BAT		Tin Coated Copper	
EDA2X24BA	2	17⅞ x 14⅞ x 20⅞	
24BAT		Tin Coated Copper	
EDA2X24FA	2	16⅝ x 18⅞ x 20⅞	
24FAT		Tin Coated Copper	
EDA2X30BA	2½	21¾ x 14⅞ x 20⅞	
30BAT		Tin Coated Copper	
EDA2X30FA	2½	21⅜ x 18⅞ x 20⅞	
30FAT		Tin Coated Copper	
EDA2X36BA	3	23¾ x 14⅞ x 20⅞	
36BAT		Tin Coated Copper	
EDA2X36FA	3	23¼ x 18⅞ x 20⅞	
36FAT		Tin Coated Copper	
EDA2X36JA	3	22⅝ x 21⅞ x 20⅞	
36JAT		Tin Coated Copper	
EDA2X42JA	3½	24¾ x 21⅞ x 20⅞	
42JAT		Tin Coated Copper	
EDA2X42LA	3½	24½ x 23⅝ x 20⅞	
42LAT		Tin Coated Copper	
EDA2X48FA	4	29⅞ x 18⅞ x 20⅞	
48FAT		Tin Coated Copper	
EDA2X48JA	4	25⅞ x 21⅞ x 20⅞	
48JAT		Tin Coated Copper	
EDA2X48LA	4	24⅞ x 23⅝ x 20⅞	
48LAT		Tin Coated Copper	
EDA2X60JA	5	31⅝ x 21⅞ x 20⅞	
60JAT		Tin Coated Copper	
EDA2X60LA	5	31⅞ x 23⅝ x 20⅞	
60LAT		Tin Coated Copper	



Rated in accordance with ARI Standard 210 and/or 240. Certification applies only when used with proper components as listed with ARI.



## A-COILS

### R-22 SYSTEMS

### 1½ THRU 5 TONS

#### FEATURES

- Value Line
- Upflow installation
- Bolt-on TXV metering device factory installed on all models (equalizer tube brazed in)
- Copper tube / aluminum fin coil
- Two condensate drain connections

#### WARRANTY

- 5 year limited coil and parts warranties



Model	Size (tons)	Dimensions H x W x D (in)	Price
EBA2X18BA	1½	13⅜ x 14⅞ x 20⅞	
EBA2X24BA	2	17⅞ x 14⅞ x 20⅞	
EBA2X24FA	2	16⅝ x 18⅞ x 20⅞	
EBA2X30BA	2½	21¾ x 14⅞ x 20⅞	
EBA2X30FA	2½	21¾ x 18⅞ x 20⅞	
EBA2X36BA	3	23¾ x 14⅞ x 20⅞	
EBA2X36FA	3	23¾ x 18⅞ x 20⅞	
EBA2X36JA	3	22⅝ x 21⅞ x 20⅞	
EBA2X42JA	3½	24¾ x 21⅞ x 20⅞	
EBA2X42LA	3½	24½ x 23⅝ x 20⅞	
EBA2X48FA	4	29⅞ x 18⅞ x 20⅞	
EBA2X48JA	4	25⅞ x 21⅞ x 20⅞	
EBA2X48LA	4	24⅞ x 23⅝ x 20⅞	
EBA2X60JA	5	31⅝ x 21⅞ x 20⅞	
EBA2X60LA	5	31⅞ x 23⅝ x 20⅞	



Rated in accordance with ARI Standard 210 and/or 240. Certification applies only when used with proper components as listed with ARI.



# EMA2, EMA4

## COILS for MANUFACTURED HOUSING

### R-22 or ENVIRONMENTALLY SOUND R-410A SYSTEMS

#### 2, 3, and 4 TONS

#### FEATURES

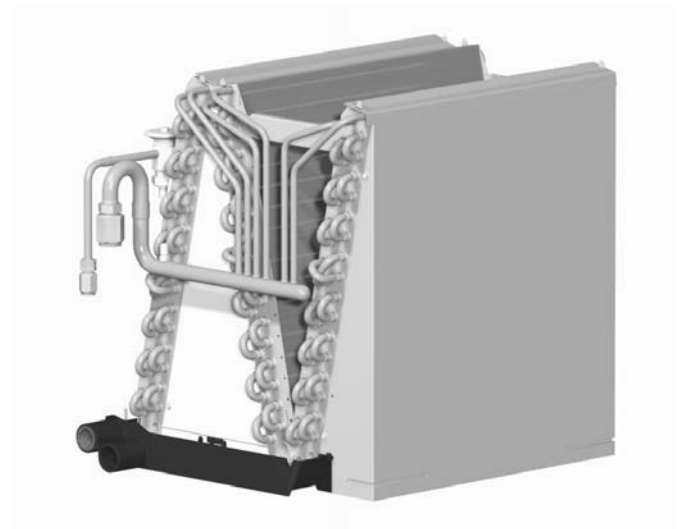
- Upflow or Downflow installation
- Bolt-on TXV metering device factory installed on all models (equalizer tube brazed in)
- Copper tube / aluminum fin coil with latest high tech fin design
- Two condensate drain connections
- “N” evaporator design to keep height at a minimum
- Shipped with condensate drain hose and trap
- Shipped with fittings and adapter plates

#### AVAILABLE WITH TIN COATED COPPER TUBING

- Model numbers ending in “AT” have industry exclusive tin coated copper main tubing for additional corrosion protection

#### WARRANTY

- 10 year limited coil warranty (“AT” tin coated models)
- 5 year limited coil warranty (standard models)
- 5 year limited parts warranty



	Model	Size (tons)	Dimensions H x W x D (in)	Price
R-410A	EMA4X24DA	2	12 <sup>5</sup> / <sub>8</sub> x 17 <sup>7</sup> / <sub>8</sub> x 19 <sup>9</sup> / <sub>16</sub>	
	24DAT	Tin Coated Copper		
	EMA4X36DA	3	14 <sup>11</sup> / <sub>16</sub> x 17 <sup>7</sup> / <sub>8</sub> x 19 <sup>9</sup> / <sub>16</sub>	
	36DAT	Tin Coated Copper		
	EMA4X48DA	4	18 <sup>3</sup> / <sub>4</sub> x 17 <sup>7</sup> / <sub>8</sub> x 19 <sup>9</sup> / <sub>16</sub>	
	48DAT	Tin Coated Copper		
R-22	EMA2X24DA	2	12 <sup>5</sup> / <sub>8</sub> x 17 <sup>7</sup> / <sub>8</sub> x 19 <sup>9</sup> / <sub>16</sub>	
	24DAT	Tin Coated Copper		
	EMA2X36DA	3	14 <sup>11</sup> / <sub>16</sub> x 17 <sup>7</sup> / <sub>8</sub> x 19 <sup>9</sup> / <sub>16</sub>	
	36DAT	Tin Coated Copper		
	EMA2X48DA	4	18 <sup>3</sup> / <sub>4</sub> x 17 <sup>7</sup> / <sub>8</sub> x 19 <sup>9</sup> / <sub>16</sub>	
	48DAT	Tin Coated Copper		



Rated in accordance with ARI Standard 210 and/or 240. Certification applies only when used with proper components as listed with ARI.



# EHD2, EHD4

## CASED HORIZONTAL DUCT COILS

### R-22 or ENVIRONMENTALLY SOUND R-410A SYSTEMS

#### 2 THRU 5 TONS

#### FEATURES

- Horizontal, bi-directional airflow
- Bolt-on TXV metering device factory installed on all models (equalizer tube brazed in)
- Slide-out feature for easy cleaning
- Copper tube / aluminum fin slab coil
- Galvanized steel cabinet

#### AVAILABLE WITH TIN COATED COPPER TUBING

- Model numbers ending in "AT" have industry exclusive tin coated copper main tubing for additional corrosion protection

#### WARRANTY

- 10 year limited coil warranty ("AT" tin coated models)
- 5 year limited coil warranty (standard models)
- 5 year limited parts warranty



	Model	Size (tons)	Dimensions H x W x D (in)	Price
R-410A	EHD4X24AA	2	28 <sup>3</sup> / <sub>8</sub> x 11 <sup>3</sup> / <sub>4</sub> x 24 <sup>1</sup> / <sub>16</sub>	
	24AAT		Tin Coated Copper	
	EHD4X30AA	2 <sup>1</sup> / <sub>2</sub>	28 <sup>3</sup> / <sub>8</sub> x 11 <sup>3</sup> / <sub>4</sub> x 24 <sup>1</sup> / <sub>16</sub>	
	30AAT		Tin Coated Copper	
	EHD4X36AA	3	28 <sup>3</sup> / <sub>8</sub> x 11 <sup>3</sup> / <sub>4</sub> x 28 <sup>13</sup> / <sub>16</sub>	
	36AAT		Tin Coated Copper	
	EHD4X42AA	3 <sup>1</sup> / <sub>2</sub>	28 <sup>3</sup> / <sub>8</sub> x 11 <sup>3</sup> / <sub>4</sub> x 28 <sup>13</sup> / <sub>16</sub>	
	42AAT		Tin Coated Copper	
	EHD4X48AA	4	30 <sup>3</sup> / <sub>8</sub> x 11 <sup>3</sup> / <sub>4</sub> x 28 <sup>13</sup> / <sub>16</sub>	
	48AAT		Tin Coated Copper	
R-22	EHD4X60AA	5	30 <sup>3</sup> / <sub>8</sub> x 11 <sup>3</sup> / <sub>4</sub> x 38 <sup>15</sup> / <sub>16</sub>	
	60AAT		Tin Coated Copper	
	EHD2X24AA	2	28 <sup>3</sup> / <sub>8</sub> x 11 <sup>3</sup> / <sub>4</sub> x 24 <sup>1</sup> / <sub>16</sub>	
	24AAT		Tin Coated Copper	
	EHD2X30AA	2 <sup>1</sup> / <sub>2</sub>	28 <sup>3</sup> / <sub>8</sub> x 11 <sup>3</sup> / <sub>4</sub> x 24 <sup>1</sup> / <sub>16</sub>	
	30AAT		Tin Coated Copper	
	EHD2X36AA	3	28 <sup>3</sup> / <sub>8</sub> x 11 <sup>3</sup> / <sub>4</sub> x 28 <sup>13</sup> / <sub>16</sub>	
	36AAT		Tin Coated Copper	
	EHD2X42AA	3 <sup>1</sup> / <sub>2</sub>	28 <sup>3</sup> / <sub>8</sub> x 11 <sup>3</sup> / <sub>4</sub> x 28 <sup>13</sup> / <sub>16</sub>	
	42AAT		Tin Coated Copper	
	EHD2X48AA	4	30 <sup>3</sup> / <sub>8</sub> x 11 <sup>3</sup> / <sub>4</sub> x 28 <sup>13</sup> / <sub>16</sub>	
	48AAT		Tin Coated Copper	
	EHD2X60AA	5	30 <sup>3</sup> / <sub>8</sub> x 11 <sup>3</sup> / <sub>4</sub> x 38 <sup>15</sup> / <sub>16</sub>	
	60AAT		Tin Coated Copper	



Rated in accordance with ARI Standard 210 and/or 240. Certification applies only when used with proper components as listed with ARI.



# MODEL NUMBER IDENTIFICATION

## Modular Blowers and Electric Furnace

MODULAR BLOWERS and ELECTRIC FURNACE MODEL NUMBER IDENTIFICATION GUIDE						
	<b>MV</b>	<b>08</b>	<b>B15</b>	<b>00</b>	<b>A</b>	<b>0</b>
MV = Modular Variable Speed Blower MF = Modular Electric Furnace MB = Modular Blower Cabinet						
08 = 800 (2 ton) 12 = 1200 (3 ton) 16 = 1600 (4 ton) 20 = 2000 (5 ton)						
<b>NOMINAL CFM</b>						
B15 = 15½" F19 = 19⅛" J22 = 22¾" N26 = 26⅔" L24 = 24½"						
<b>COIL WIDTH MATCH</b>						
Reserved for Electric Heaters						
Sales Code						
Engineering Revision						

MODULAR BLOWERS and ELECTRIC FURNACE ACCESSORY PART NUMBER IDENTIFICATION GUIDE							
	<b>A</b>	<b>M</b>	<b>F</b>	<b>001</b>	<b>DF</b>	<b>A</b>	<b>1</b>
A = Accessory							
C = Cooling							
H = Heating							
M = Multi-use (heating and cooling)							
X = Special							
<b>PRODUCT TYPE</b>							
Series							
Product Identifier Number							
DF = Downflow Kit                      NH= No Heat Kit							
OT = 2-stage Outdoor Thermostat							
SP = Single Point Wiring Kit							
<b>ACCESSORY TYPE</b>							
Sales Code							
Engineering Revision							

# MODEL NUMBER IDENTIFICATION

## Modular Blowers and Electric Furnace (continued)

ELECTRIC HEATER MODEL NUMBER IDENTIFICATION GUIDE						
	<b>EHK</b>	<b>05</b>	<b>A</b>	<b>K</b>	<b>N</b>	<b>1</b>
EHK = Electric Heater Kit						
05 = 5 kW						
07 = 7 kW						
09 = 9 kW						
10 = 10 kW						
15 = 15 kW						
18 = 18 kW						
20 = 20 kW						
25 = 25 kW						
30 = 30 kW						
<b>NOMINAL HEAT VALUE</b>						
Sales Code						
K = 208 / 230 single-phase						
H = 208 / 230, 3-phase						
KC = 208 / 230, supplied as single phase, field convertible to 3-phase						
HC = 208 / 230 supplied as 3-phase, field convertible to single phase						
<b>VOLTAGE (60 Hz)</b>						
Product Identifier						
Engineering Code						

MODULAR BLOWERS and ELECTRIC FURNACE HEATER PART NUMBER IDENTIFICATION GUIDE						
	<b>AMF</b>	<b>K</b>	<b>05</b>	<b>DH</b>	<b>A</b>	<b>1</b>
AMF = Electric Heater Kit						
K = 208 / 230 single-phase						
H = 208 / 230, 3-phase						
<b>VOLTAGE</b>						
05 = 5 kW						
07 = 7 kW						
10 = 10 kW						
14 = 14 kW						
15 = 15 kW						
20 = 20 kW						
25 = 25 kW						
30 = 30 kW						
<b>NOMINAL HEAT VALUE</b>						
Product Identifier						
Sales Code						
Engineering Revision						



# MODEL NUMBER IDENTIFICATION

## Modular Blowers and Electric Furnace (continued)

MODULAR BLOWERS and ELECTRIC FURNACE HEATER PART NUMBER IDENTIFICATION GUIDE										
	EH	I	A	15	K	B	1	0		
EH = Electric Heater				00 = No Heat Kit 05 = 5 kW 07 = 7 kW 10 = 10 kW 15 = 15 kW 20 = 20 kW 25 = 25 kW						
I = ICP Modular Unit										
A = Sales Code										
				NOMINAL HEAT VALUE						
K = 208 / 230 single-phase										
H = 208 / 230, 3-phase				VOLTAGE						
B = Circuit Breaker										
N = Non-Breaker				ELECTRICAL PROTECTION						
Engineering Revision										
Product Identifier										

## MODULAR VARIABLE SPEED BLOWER CABINET

### 2, 3, 4, and 5 TONS

#### FEATURES

- Variable Speed modular blower
- Supports two-stage outdoor units
- Dehumidification Speed: 80% Airflow
- Efficient low continuous fan selection: 50% Airflow
- Upflow, horizontal right or left applications
- Downflow requires sub-base accessory
- Electronic fan control board
- Adjustable Blower time delay
- Accepts accessory two stage outdoor thermostats
- Matches with AC and HP cased coils (Hot water coil may be used, but doesn't match case size)
- Field installed electric heater packages from 5 kW – 25 kW available separately
- 208/230–1–60 supply voltage

#### SERVICE

- Direct drive slide-out blower assembly

#### QUALITY

- Internally lined with ½" Tuf-Skin II insulation
- Prepainted galvanized steel cabinet

#### WARRANTY

- 5 year limited parts warranty

#### ACCESSORY HEATER

- UL listed for sale in U.S.A. and Canada
- Easy to install with simple 9-pin plug in connection to Modular Blower Cabinet
- Designed for 208/230 Volt
- Single & three-phase models
- Breakerless 5, 7.5, and 10 nominal kW models available
- 5, 7.5, 10, 15, 20, and 25 nominal kW models available with Circuit Breakers
- Auto-reset high temperature limits
- Requires a "NO HEAT KIT" if installed without electric heat.



Rated in accordance with ARI Standard 210 and/or 240. Certification applies only when used with proper components as listed with ARI.



Model	Nominal Tons	CFM Range		Motor HP	Dimensions H x W x D (in)	Unit Wt. (lbs)	Price
		Low	High				
MV08B1500B	2	350	1200	1/2	24 x 15½ x 20½	56	
MV12F1900B	3	415	1400	1/2	24 x 19⅛ x 20½	58	
MV16J2200B	4	425	1600	3/4	24 x 22¾ x 20½	69	
MV20L2400B	5	540	2000	3/4	24 x 24½ x 20½	72	

## MODULAR ELECTRIC FURNACE

### 2, 3, 4, and 5 TONS

#### FEATURES

- Modular Blower Cabinet, Air Conditioning or Heat Pump ready
- Upflow, horizontal right or left applications
- Downflow requires sub-base accessory
- Electronic fan control board
- Three speed PSC motor on all models
- Matches with AC and HP cased coils (Hot water coil may be used, but doesn't match case size)
- Accepts accessory two stage outdoor thermostats
- Field installed electric heater packages from 5 kW – 25 kW available separately
- 208/230–1–60 supply voltage

#### FEATURES

- Widths are 15½, 19⅞, 22¾, 26⅜

#### SERVICE

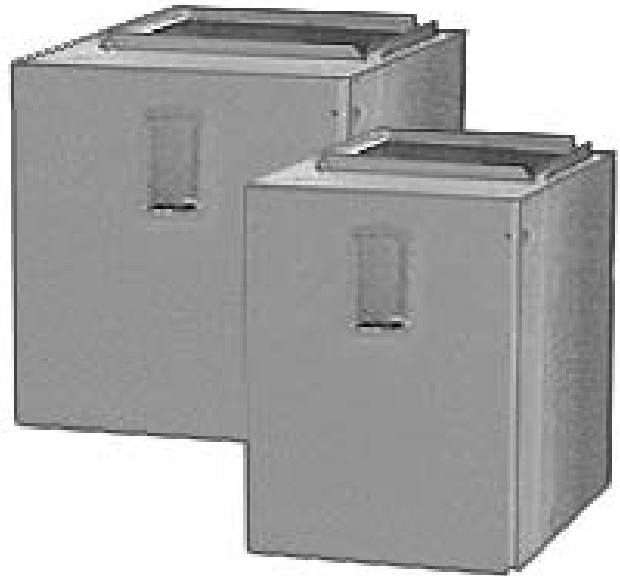
- Direct drive slide-out blower assembly

#### QUALITY

- Internally lined with ½" Tuf-Skin II insulation
- Prepainted galvanized steel cabinet

#### WARRANTY

- 5 year limited parts warranty



Rated in accordance with ARI Standard 210 and/or 240. Certification applies only when used with proper components as listed with ARI.

Model	Nominal Tons	Nominal CFM	Motor HP	Dimensions H x W x D (in)	Unit Weight (lbs)	Price
MF08B1500A	2	800	1/3	24 x 15½ x 20½	54	
MF12F1900A	3	1200	1/2	24 x 19⅞ x 20½	54	
MF16J2200A	4	1600	1/2	24 x 22¾ x 20½	75	
MF20N2600A	5	2000	3/4	24 x 26⅜ x 20½	85	

## MODULAR BLOWER CABINET

### 2, 3, 4, and 5 TONS

#### FEATURES

- Air conditioning ready
- Heat pump ready (no electric heat)
- Upflow, downflow, horizontal right or left applications
- Prepainted galvanized steel cabinet
- 115V–1–60 supply voltage
- Matches with AC and HP cased coils

#### FEATURES

- Widths are 15½, 19½, 22¾, 26¾

#### SERVICE

- Direct drive slide-out blower assembly

#### QUALITY

- Internally lined with ½" Tuf-Skin II insulation

#### WARRANTY

- 5 year limited parts warranty



Rated in accordance with ARI Standard 210 and/or 240. Certification applies only when used with proper components as listed with ARI.



Model	Nominal Tons	Nominal CFM	Motor HP	Dimensions H x W x D (in)	Unit Weight (lbs)	Price
MB08B1500A	2	800	1/4	24 x 15½ x 20½	54	
MB12F1900A	3	1200	1/3	24 x 19½ x 20½	54	
MB16J2200A	4	1600	1/2	24 x 22¾ x 20½	75	
MB20N2600A	5	2000	3/4	24 x 26¾ x 20½	85	

# ACCESSORIES

## Modular Blower Cabinets

MF "A" Series			
Part Number	Description	Use with Model Sizes	Price
AMF002OTA	2 Stage OutdoorThermostat	7.5 kW&#2;&#2;above electric heaters	
AMF001NHA	No Heat Kit	ALL (required when electric heater is not installed)	
AMF015DFA	Downflow Kit (Subbase)	8	
AMF019DFA	Downflow Kit (Subbase)	12	
AMF022DFA	Downflow Kit (Subbase)	16	
AMF026DFA	Downflow Kit (Subbase)	20	
ELECTRIC HEATERS for MF "A" Series			
AMF001NHA	No Heat Kit	ALL	
AMFK05DHA	5 kW Single Phase Non-Breaker	ALL	
AMFK05DHB	5 kW Single Phase Breaker	ALL	
AMFK07DHA	7½ kW Single Phase Non-Breaker	ALL	
AMFK07DHB	7½ kW Single Phase Breaker	ALL	
AMFK10DHA	10 kW Single Phase Non-Breaker	ALL	
AMFK10DHB	10 kW Single Phase Breaker	ALL	
AMFK14DHB	15 kW Single Phase Breaker	ALL	
AMFK20DHB	20 kW Single Phase Breaker	12, 16, 20	
AMFK25DHB	25 kW Single Phase Breaker	16, 20	
AMFK30DHB	30 kW Single Phase Breaker	16, 20	
AMFK20SPA	Single Point Wiring Kit	15–20 kW heaters	
AMFK30SPA	Single Point Wiring Kit	25–30 kW heaters	
AMFH10DHB	10 kW 3-Phase Breaker	12, 16, 20	
AMFH15DHB	15 kW 3-Phase Breaker	12, 16, 20	
AMFH20DHB	20 kW 3-Phase Breaker	16, 20	
AMFH25DHB	25 kW 3-Phase Breaker	16, 20	
AMFH30DHB	30 kW 3-Phase Breaker	16, 20	
MV "B" Series			
AMFK20SPA	Single Point Wiring Kit (4-pole)	15–20 kW	
AMFK30SPA	Single Point Wiring Kit (6-pole)	25 kW	
AMF002OTA	2-Stage ODTs	15 kW and above	
AMF08DFB1	Downflow kit	8	
AMF12DFB1	Downflow kit	12	
AMF16DFB1	Downflow kit	16	
AMF20DFB1	Downflow kit	20	
ELECTRIC HEATERS for MV "B" Series			
EHIA00KN10	No Heat Kit	08, 12, 16, 20	
EHIA05KB10	5 kW 1-Phase w/C.B.	08, 12, 16, 20	
EHIA05KN10	5 kW 1-Phase w/T.B.	08, 12, 16, 20	
EHIA07KB10	7.5 kW 1-Phase w/C.B.	08, 12, 16, 20	
EHIA07KN10	7.5 kW 1-Phase w/T.B.	08, 12, 16, 20	
EHIA10KB10	10 kW 1-Phase w/C.B.	08, 12, 16, 20	
EHIA10KN10	10 kW 1-Phase w/T.B.	08, 12, 16, 20	
EHIA15KB10	15 kW 1-Phase w/C.B.	08, 12, 16, 20	
EHIA20KB10	20 kW 1-Phase w/C.B.	12, 16, 20	
EHIA25KB10	25 kW 1-Phase w/C.B.	16, 20	
EHIA10HB10	10 kW 3-Phase w/C.B.	12, 16, 20	
EHIA15HB10	15 kW 3-Phase w/C.B.	12, 16, 20	
EHIA20HB10	20 kW 3-Phase w/C.B.	16, 20	
EHIA25HB10	25 kW 3-Phase w/C.B.	16, 20	

KN = 1-phase  
KB = 1-phase  
HB = 3-phase

T.B. = terminal block  
C.B. = circuit breaker

# MODEL NUMBER IDENTIFICATION

## Furnaces

### GAS FURNACE MODEL NUMBER IDENTIFICATION GUIDE

<b>Brand Identifier</b>	<b>N</b>	<b>9</b>	<b>MP</b>	<b>2</b>	<b>075</b>	<b>B</b>	<b>12</b>	<b>C</b>	<b>1</b>	<b>Engineering Rev.</b> Denotes minor changes
N = Entry Level										<b>Marketing Digit</b> Denotes minor change
<b>Brand Efficiency</b>										<b>Cooling Airflow</b>
8 = Non-Condensing, 80+% Gas Furnace										08 = 800 CFM
9 = Condensing, 90+% Gas Furnace										12 = 1200 CFM
										14 = 1400 CFM
										16 = 1600 CFM
										20 = 2000 CFM
<b>Installation Configuration</b>										<b>Cabinet Width</b>
UP = Upflow    DN = Downflow    UH = Upflow/Horizontal										B = 15.5" Wide
HZ = Horizontal    DH = Downflow/Horizontal										F = 19.1" Wide
MP = Multiposition, Up/Down/Horizontal										J = 22.8" Wide
VX = Multiposition, Up/Down/Horizontal, Variable										L = 24.5" Wide
<b>Major Design Feature</b>										<b>Input (Nominal MBTUH)</b>
1 = One (Single) Pipe    N = Single Stage										
2 = Two Pipe    P = PVC Vent										
D = 1 or 2 Pipe    T = Two Stage										
L = Low NOx    V = Variable Speed										
X = 95%,										

### ACCESSORIES MODEL NUMBER IDENTIFICATION GUIDE

<b>MODEL NUMBER</b>	<b>N</b>	<b>A</b>	<b>H</b>	<b>A</b>	<b>001</b>	<b>NK</b>
<b>PRODUCT FAMILY</b>						
<b>PRODUCT GROUP</b>						
A - ACCESSORIES						<b>PRODUCT IDENTIFIER</b> SEE BELOW
<b>PRODUCT TYPE</b>						
C - COOLING    X - SPECIAL						
M - MULTIUSE (Heating and/or Cooling)						
S - SUPPLEMENTARY HEAT						
H - HEATING						<b>PRODUCT IDENTIFIER NUMBER</b>
						<b>SERIES</b>

### ACCESSORY PRODUCT IDENTIFIER ASSIGNMENT

AC = ANTICYCLE TIMER	FK = FILTER KIT	OT = OUTDOOR THERMOSTAT
AH = AUXILIARY HEATER	FP = 10 PACK FILTER KIT	PA = PLENUM ASSEMBLY
BK = BLOWER KIT	GF = GRILLE, FILTER	PS = LP PRESSURE SWITCH
CA = CURB ASSEMBLY/	GR = GRILLE	RC = RETURN AIR CABINET
COIL ASSEMBLY	HG = HIGH ALT. NATURAL GAS KIT	SB = SUBBASE
CC = COIL CABINET	HK = HORIZONTAL PRESSURE SWITCH KIT	SC = START COMPONENT
CD = COMPRESSOR DIAGNOSTIC	HL = HI ALT. LP (PROPANE) KIT	SK = STUB KIT
CV = CONCENTRIC VENT KIT	LC = LINE, CHARGED	TK = TRANSITION KIT
DH = DRAFT HOOD KIT	LF = ALTERNATE INPUT KIT	TS = THERMOSTAT, SUBBASE
DK = DRAIN KIT	LP = NATURAL TO PROPANE KIT	TW = THERMOSTAT, WALL
DP = 10 PACK DRAIN PAN KIT	LV = LONG VENT KIT	VB = VARIABLE SPEED
EH = EMERGENCY HEAT KIT	MB = MODULAR BLOWER	UPGRADE KIT
EK = ECONOMIZER KIT	NG = PROPANE TO NATURAL GAS KIT	VC = VENT GUARD
FC = FILTER COMPARTMENT	NK = NEUTRALIZER KIT	WK = TWINNING KIT
FD = FLUE DAMPER	OB = OIL BURNER	WL = WARNING LABEL
FF = FILTER FRAME		REPLACEMENT KIT

## Single Stage Furnace Multiposition

### FLEXIBILITY

- Dual certified venting (1 or 2 pipes) Direct Vent furnace
- 40" high with wider cabinets, for ease of installation
- Factory shipped for natural gas, with Propane Gas conversion kits available
- Four position – upflow/downflow/horizontal installation
- Vent pipe can be run horizontally or vertically
- Internal condensate drain system

### SERVICE

- Self diagnostics
- Entire blower assembly mounted on rails

### COMFORT

- Adjustable timed blower Off delay
- 24 and 115 VAC humidifier terminal
- Electronic air cleaner terminal

### EFFICIENCY

- 92.1% AFUE efficiency range
- Single stage gas valve operation
- Single stage integrated control
- Multispeed, prelubricated PSC blower motors
- Induced draft blower
- In-shot burners
- California NOx approved (50k, 75k, 80k, 100k, 125k models)

### QUALITY

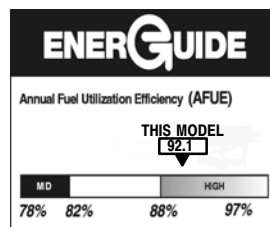
- Stainless steel secondary heat exchanger
- High temperature limit control prevents overheating
- Direct ignition with Silicon Nitride ignitor
- Flame roll-out sensors standard
- Solid doors
- 5 year Limited Parts Warranty
- 20 year Limited Heat Exchanger Warranty



Illustrations and photographs are only representative.  
Some product models may vary.

### ⚠ WARNING

This furnace is not designed for use in mobile homes, trailers, or recreational vehicles. Such use could result in property damage and/or death.



UPFLOW/DOWNFLOW/HORIZONTAL (NATURAL GAS)						
Model Number	Heat Exchangers	Dimensions H x W x D (In.)	Input (MBTUH)	Efficiency AFUE	Cooling Capacity @ .5 in wc	Price
N9MPD040F08A	20 Years	40 x 19 <sup>1</sup> / <sub>8</sub> x 29	40	92.1	1.5 – 2.0 TON	
N9MPD050F12A	20 Years	40 x 19 <sup>1</sup> / <sub>8</sub> x 29	50	92.1	1.5 – 3.0 TON	
N9MPD060F12A	20 Years	40 x 19 <sup>1</sup> / <sub>8</sub> x 29	60	92.1	1.5 – 3.0 TON	
N9MPD075F12A	20 Years	40 x 19 <sup>1</sup> / <sub>8</sub> x 29	75	92.1	1.5 – 3.0 TON	
N9MPD080J16A	20 Years	40 x 22 <sup>3</sup> / <sub>4</sub> x 29	80	92.1	2.5 – 4.0 TON	
N9MPD100J14A	20 Years	40 x 22 <sup>3</sup> / <sub>4</sub> x 29	100	92.1	2.0 – 3.5 TON	
N9MPD100J20A	20 Years	40 x 22 <sup>3</sup> / <sub>4</sub> x 29	100	92.1	3.5 – 5.0 TON	
N9MPD125L20A	20 Years	40 x 24 <sup>1</sup> / <sub>2</sub> x 29	125	92.1	3.5 – 5.0 TON	

# N9MP2

## Performance 90 Single Stage

### FLEXIBILITY

- Direct Vent ONLY (2 pipe only)
- 40" high with narrower cabinets, for more flexibility in tight locations
- Factory shipped for natural gas, with Propane Gas conversion kits available
- Four position – upflow/downflow/horizontal installation
- Vent pipe can be run horizontally or vertically
- Internal condensate drain system

### SERVICE

- Self diagnostics
- Entire blower assembly mounted on rails

### COMFORT

- Adjustable timed blower Off delay
- 24 and 115 VAC humidifier terminal
- Electronic air cleaner terminal

### EFFICIENCY

- 90% AFUE efficiency range
- Single stage gas valve operation
- Single stage integrated control
- Multispeed, prelubricated PSC blower motors
- Induced draft blower
- In-shot burners

### QUALITY

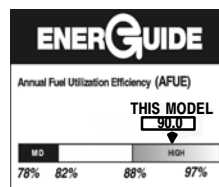
- RPJ III Aluminized steel heat exchanger
- Stainless steel secondary heat exchanger
- High temperature limit control prevents overheating
- Direct ignition with Silicon Nitride ignitor
- Flame roll-out sensors standard
- Solid doors
- 5 year Limited Parts Warranty
- 20 year Limited Heat Exchanger Warranty



Illustrations and photographs are only representative.  
Some product models may vary.

### ⚠ WARNING

This furnace is not designed for use in mobile homes, trailers, or recreational vehicles. Such use could result in property damage and/or death.



UPFLOW/DOWNFLOW/HORIZONTAL (NATURAL GAS)						
Model Number	Heat Exchangers	Dimensions H x W x D (In.)	Input (MBTUH)	Efficiency AFUE	Cooling Capacity @ .5 in wc	Price
N9MP2050B12C	20 Year	40 x 15 <sup>1</sup> / <sub>2</sub> x 29	50	90.0	1.5 – 3.0 TON	
N9MP2075B12C	20 Year	40 x 15 <sup>1</sup> / <sub>2</sub> x 29	75	90.0	1.5 – 3.0 TON	
N9MP2080F16C	20 Year	40 x 19 <sup>1</sup> / <sub>8</sub> x 29	80	90.0	2.5 – 4.0 TON	
N9MP2100F14C	20 Year	40 x 19 <sup>1</sup> / <sub>8</sub> x 29	100	90.0	2 – 3.5 TON	
N9MP2100J20C	20 Year	40 x 22 <sup>3</sup> / <sub>4</sub> x 29	100	90.0	3.5 – 5.0 TON	
N9MP2125J20C	20 Year	40 x 22 <sup>3</sup> / <sub>4</sub> x 29	125	90.0	3.5 – 5.0 TON	

Specifications subject to change without notice.



# N9MP1

## Performance 90 Single Stage Furnace

### FLEXIBILITY

- Indoor combustion air (1 pipe only)
- 40" high with narrower cabinets, for more flexibility in tight locations
- Factory shipped for natural gas, with Propane Gas conversion kits available
- Four position – upflow/downflow/horizontal installation
- Vent pipe can be run horizontally or vertically
- Internal condensate drain system

### SERVICE

- Self diagnostics
- Entire blower assembly mounted on rails

### COMFORT

- Adjustable timed blower off delay
- 24 and 115 VAC humidifier terminal
- Electronic air cleaner terminal

### EFFICIENCY

- 90% AFUE efficiency range
- Single stage gas valve operation
- Single stage integrated control
- Multispeed, prelubricated PSC motors
- Induced draft blower
- In-shot burners

### QUALITY

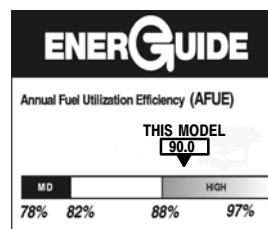
- RPJ III Aluminized steel heat exchanger
- Stainless steel secondary heat exchanger
- High temperature limit control prevents overheating
- Direct ignition with Silicon Nitride ignitor
- Flame roll-out sensors standard
- Louvered doors
- 5 year Limited Parts Warranty
- 20 year Limited Heat Exchanger Warranty



Illustrations and photographs are only representative.  
Some product models may vary.

### ⚠ WARNING

This furnace is not designed for use in mobile homes, trailers, or recreational vehicles. Such use could result in property damage and/or death.



UPFLOW/DOWNFLOW/HORIZONTAL (NATURAL GAS)						
Model Number	Heat Exchangers	Dimensions H x W x D (In.)	Input (MBTUH)	Efficiency AFUE	Cooling Capacity @ .5 in wc	Price
N9MP1040B08C	20 Year	40 x 15 <sup>1</sup> / <sub>2</sub> x 29	40	90.0	1.5 – 2.0 TON	
N9MP1050B12C	20 Year	40 x 15 <sup>1</sup> / <sub>2</sub> x 29	50	90.0	1.5 – 3.0 TON	
N9MP1060B12C	20 Year	40 x 15 <sup>1</sup> / <sub>2</sub> x 29	60	90.0	1.5 – 3.0 TON	
N9MP1075B12C	20 Year	40 x 15 <sup>1</sup> / <sub>2</sub> x 29	75	90.0	1.5 – 3.0 TON	
N9MP1080F16C	20 Year	40 x 19 <sup>1</sup> / <sub>8</sub> x 29	80	90.0	2.5 – 4.0 TON	
N9MP1100F14C	20 Year	40 x 19 <sup>1</sup> / <sub>8</sub> x 29	100	90.0	2.0 – 3.5 TON	
N9MP1100J20C	20 Year	40 x 22 <sup>3</sup> / <sub>4</sub> x 29	100	90.0	3.5 – 5.0 TON	
N9MP1125J20C	20 Year	40 x 22 <sup>3</sup> / <sub>4</sub> x 29	125	90.0	3.5 – 5.0 TON	

Specifications subject to change without notice.

# N8MPN

## Performance 80 Single Stage Furnace

### FLEXIBILITY

- 35" high for more flexibility in tight locations
- Factory shipped for natural gas, with Propane gas conversion kits available
- Four position – upflow/downflow/horizontal installation
- Category I venting
- Three position inducer capability
- Common venting with water heater

### SERVICE

- Self diagnostics
- Entire blower assembly mounted on rails

### COMFORT

- Adjustable timed blower Off delay
- 24 and 115 VAC humidifier terminal
- Electronic air cleaner terminal

### EFFICIENCY

- 80% AFUE efficiency range
- Single stage gas valve operation
- Single stage integrated control
- Multispeed, prelubricated PSC motors
- Induced draft blower
- In-shot burners

### QUALITY

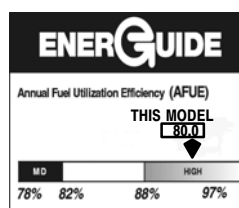
- RPJ III Aluminized steel heat exchanger
- High temperature limit control prevents overheating
- Direct ignition with Silicon Nitride ignitor
- Flame roll-out sensors standard
- Louvered doors
- One piece prepainted steel cabinet
- Masonry chimney adapter available
- 5 year Limited Parts Warranty
- 20 year Limited Heat Exchanger Warranty



Illustrations and photographs are only representative.  
Some product models may vary.

### ⚠ WARNING

This furnace is not designed for use in mobile homes, trailers, or recreational vehicles. Such use could result in property damage and/or death.



UPFLOW/DOWNFLOW/HORIZONTAL (NATURAL GAS)						
Model Number	Heat Exchangers	Dimensions H x W x D (In.)	Input (MBTUH)	Efficiency AFUE	Cooling Capacity @ .5 in wc	Price
N8MPN050B12B	20 year	35 x 15 <sup>1</sup> / <sub>2</sub> x 29	50,000	80%	1.5 – 3.0 TON	
N8MPN075B12B	20 year	35 x 15 <sup>1</sup> / <sub>2</sub> x 29	75,000	80%	1.5 – 3.0 TON	
N8MPN075F16B	20 year	35 x 19 <sup>1</sup> / <sub>8</sub> x 29	75,000	80%	2.0 – 4.0 TON	
N8MPN100F14B	20 year	35 x 19 <sup>1</sup> / <sub>8</sub> x 29	100,000	80%	2.0 – 3.5 TON	
N8MPN100F20B	20 year	35 x 19 <sup>1</sup> / <sub>8</sub> x 29	100,000	80%	3.5 – 5.0 TON	
N8MPN100J22B	20 year	35 x 22 <sup>3</sup> / <sub>4</sub> x 29	100,000	80%	3.5 – 5.5 TON	
N8MPN125J20B	20 year	35 x 22 <sup>3</sup> / <sub>4</sub> x 29	125,000	80%	3.5 – 5.0 TON	
N8MPN125J22B	20 year	35 x 22 <sup>3</sup> / <sub>4</sub> x 29	125,000	80%	3.5 – 5.5 TON	

Specifications subject to change without notice.

# N8MPL

## Performance 80 Single Stage Furnace

### FLEXIBILITY

- 35" high for more flexibility in tight locations
- Factory shipped for natural gas, with Propane gas conversion kits available
- Four position – upflow/downflow/horizontal installation
- Category I venting
- Three position inducer capability
- Common venting with water heater

### SERVICE

- Self diagnostics
- Entire blower assembly mounted on rails

### COMFORT

- Adjustable timed blower Off delay
- 24 and 115 VAC humidifier terminal
- Electronic air cleaner terminal

### EFFICIENCY

- 80% AFUE efficiency range
- Single stage gas valve operation
- Single stage integrated control
- Multispeed, prelubricated PSC motors
- Induced draft blower
- In-shot burners
- California NOx approved

### QUALITY

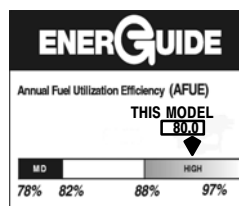
- RPJ III Aluminized steel heat exchanger
- High temperature limit control prevents overheating
- Direct ignition with Silicon Nitride ignitor
- Flame roll-out sensors standard
- Louvered doors
- One piece prepainted steel cabinet
- Masonry chimney adapter available
- 5 year Limited Parts Warranty
- 20 year Limited Heat Exchanger Warranty



Illustrations and photographs are only representative.  
Some product models may vary.

### ⚠ WARNING

This furnace is not designed for use in mobile homes, trailers, or recreational vehicles. Such use could result in property damage and/or death.



UPFLOW/DOWNFLOW/HORIZONTAL (NATURAL GAS)						
Model Number	Heat Exchangers	Dimensions H x W x D (In.)	Input (MBTUH)	Efficiency AFUE	Cooling Capacity @ .5 in wc	Price
N8MPL050B12B	20 year	35 x 15 <sup>1</sup> / <sub>2</sub> x 29	50,000	80%	1.5 – 3.0 TON	
N8MPL075B12B	20 year	35 x 15 <sup>1</sup> / <sub>2</sub> x 29	75,000	80%	1.5 – 3.0 TON	
N8MPL075F16B	20 year	35 x 19 <sup>1</sup> / <sub>8</sub> x 29	75,000	80%	2.0 – 4.0 TON	
N8MPL100F20B	20 year	35 x 19 <sup>1</sup> / <sub>8</sub> x 29	100,000	80%	3.5 – 5.0 TON	
N8MPL100J22B	20 year	35 x 22 <sup>3</sup> / <sub>4</sub> x 29	100,000	80%	3.5 – 5.5 TON	
N8MPL125J20B	20 year	35 x 22 <sup>3</sup> / <sub>4</sub> x 29	125,000	80%	3.5 – 5.0 TON	
N8MPL125J22B	20 year	35 x 22 <sup>3</sup> / <sub>4</sub> x 29	125,000	80%	3.5 – 5.5 TON	

# ACCESSORIES

## Gas Furnaces

Model Number	Description	Used With Models	Price
<b>TWINNING KIT</b>			
NAHA004WK	Twinning kit. Allows operation of two identical-size model furnaces.	All N9MP1/2(C), N8MPN/L(B) Models N9MPD(A) Models	
<b>GAS CONVERSION KITS</b>			
NAHA001LP 1172958 <sup>+</sup>	Natural gas to Propane conversion kit. Allows field conversion to Propane gas. Includes Propane Pressure Switch. (Single Stage)	N9MP1/2(C), N9MPD(A), N8MPN/L(B) Models	
NAHA001NG 1172960 <sup>+</sup>	Propane to Natural gas conversion kit. Allows field conversion to Propane gas. (Single Stage)	N9MP1/2(C), N9MPD(A), N8MPN/L(B) Models	
NAHA003LP 1174906 <sup>+</sup>	Natural gas to Propane conversion kit. Allows field conversion to Propane gas.	N9MP1/2080(C) & N9MPD(A) 040/060/080 and Alternate Input Models	
NAHA004NG 1174907 <sup>+</sup>	Propane to Natural gas conversion kit. Allows field conversion to Propane gas.	N9MP1/2080(C) & N9MPD(A) 040/060/080 and Alternate Input Models	
<b>ALTERNATE INPUT KITS</b>			
NAHA001AL	Alternate Input Kit (Nat Gas). Derates input by 20% (90+ ONLY, except 80,000 BTUH and Two-Stage)	N9MP1/2(C) 050/075/100/125 Models N9MPD(A) 050/075/100/125 Models	
NAHA002AL	Alternate Input Kit (Propane Gas). Derates input by 20% (90+ ONLY, except 80,000 BTUH and Two-Stage)	N9MP1/2(C) 050/075/100/125 Models N9MPD(A) 050/075/100/125 Models	
<b>NEUTRALIZER KIT</b>			
NAHA001NK 612833 <sup>+</sup>	Condensate neutralizer kit for condensing gas furnaces	ALL 90+ FURNACES IF REQUIRED	
<b>COIL ADAPTER</b>			
NAHA001CA	Coil Adapter for Multi-Position furnaces in the downflow application	All Multi-Position Furnaces in the Downflow Position	
<b>FILTER KITS</b>			
NAHA001FF	External filter frame kit 16" x 25"	Side Return (All Furnaces) Bottom Return (All "F" 19 <sup>1</sup> / <sub>8</sub> " Furnaces under 1600 CFM)	
NAHA001FP	Bulk Pack Kit – Qty 10		
NAHA002FF	Bottom return filter frame kit 20" x 25"	(All "J" 22 <sup>3</sup> / <sub>4</sub> " Furnaces)	
NAHA002FP	Bulk Pack Kit – Qty 10		
NAHA003FF	Bottom or side return filter frame kit 14" x 25"	(All "B" 15 <sup>1</sup> / <sub>2</sub> " Furnaces)	
NAHA003FP	Bulk Pack Kit – Qty 10		
NAHA001TK	Duct Standoff Filter Kit. To adapt 20" x 25" filter for single side return	Side Return (All single return applications with 1600 CFM or greater) Bottom Return (All "F" 19 <sup>1</sup> / <sub>8</sub> " Furnaces under 1600 CFM)	
<b>WARNING LABEL REPLACEMENT KIT</b>			
NAHL002WL	To replace Warning Labels, Operating Instructions – Qty 10	All Multi-Position Furnaces 80% & 90%	
<b>VENT GUARD</b>			
NAHA002VC	Downflow vent guard	All Multi-Position 80% furnaces in the Downflow Applications	

\* Denote H, T, or C

<sup>+</sup> Must be ordered from Service Parts

(A) = Series A, (B) = Series B, (C) = Series C, & (D) = Series D

# ACCESSORIES

## Gas Furnaces

Model Number	Description	Used With Models	Price
<b>COMBUSTIBLE FLOOR SUBBASES</b>			
NAHH001SB 1093761 <sup>+</sup>	Subbase Furnace ONLY: All 15 <sup>1</sup> / <sub>2</sub> " wide furnace models	N9MP1/2050-075B, N8MPN/L050-075B	
NAHH002SB 1093762 <sup>+</sup>	Subbase Furnace ONLY: All 19 <sup>1</sup> / <sub>4</sub> " wide furnace models	N9MP1/2080-100F(C), N9MPD040-075F(A), N8MPN/L075-100F(B)	
NAHH003SB 1093763 <sup>+</sup>	Subbase Furnace ONLY: All 22 <sup>3</sup> / <sub>4</sub> " wide furnace models	N9MP1/2100-125J(C), N8MPN/L100-125J(B), N9MPD080-100J	
NAHH010SB 1013417 <sup>+</sup>	Subbase Furnace ONLY: All 24 <sup>1</sup> / <sub>2</sub> " wide furnace models	N9MPD125L	
NAHH004SB 1085680 <sup>+</sup>	Subbase Furnace w/ 15 <sup>1</sup> / <sub>2</sub> " cased coil	All Counterflow furnace w/15 <sup>1</sup> / <sub>2</sub> " cased coil N9MP1/2050-075B(C), N8MPN/L050-075B(B)	
NAHH005SB 1085681 <sup>+</sup>	Subbase Furnace w/ 19 <sup>1</sup> / <sub>4</sub> " cased coil	Counterflow furnace w/19 <sup>1</sup> / <sub>4</sub> " cased coil N9MP1/2080-100F(C), N8MPN/L075-100F(B), N9MPD040-075F	
NAHH006SB 1085682 <sup>+</sup>	Subbase Furnace w/ 22 <sup>3</sup> / <sub>4</sub> " cased coil	Counterflow furnace w/22 <sup>3</sup> / <sub>4</sub> " cased coil N9MP1/2100-125J(C), N8MPN/L100-125J(B), N9MPD080-100J	
NAHH009SB 1013417 <sup>+</sup>	Subbase Furnace w/ 24 <sup>1</sup> / <sub>2</sub> " cased coil	Counterflow furnace w/24 <sup>1</sup> / <sub>2</sub> " cased coil N9MPD125L	
<b>HIGH ALTITUDE PRESSURE SWITCH</b>			
1013157 <sup>+</sup>	Hi Alt. Pressure Switch	N9MP1/2125(C), N9MPD125(A)	
1013803 <sup>+</sup>	Hi Alt. Pressure Switch	N9MP1/2050/075/100(C), N9MPD050/075/100(A)	
1013812 <sup>+</sup>	Hi Alt. Pressure Switch	N9MP1/2080(C)	
1013813 <sup>+</sup>	Hi Alt. Pressure Switch	N9MPD080(A)	
1175819 <sup>+</sup>	Hi Alt. Pressure Switch	N9MPD040 & 060(A)	
<b>CONCENTRIC VENT KIT</b>			
NAHA001CV 1011129 <sup>+</sup>	3" Concentric vent kit allows single wall penetration for 2 pipe direct vent applications (90+).	N9MP2050-100(C), N9MPD050-125(A)	
NAHA002CV	2" Concentric vent kit allows single wall penetration for 2 pipe direct vent applications (90+).	N9MP2050-080(C), N9MPD050-80(A),	
<b>LONG VENT PRESSURE SWITCH KITS</b>			
NAHA001LV	Replacement for the standard pressure switch.	N9MP1/2075B12(C), N9MP1/2100F14(C)	
NAHA002LV	Replacement for the standard pressure switch.	N9MP1/2100J20(C), N9MPD100J14/J20(A)	
NAHA003LV	Replacement for the Hi-altitude pressure switch.	N9MP1/2075B12(C), N9MP1/2100F14/J20(C), N9MPD100J14/J20(A)	
<b>MASONRY CHIMNEY ADAPTER</b>			
NAHA001DH	Chimney adapter (6")	N8MPN/L050-100(B)	
NAHA002DH	Chimney adapter (7")	N8MPN/L125(B)	

\* Denote H, T, or C

<sup>+</sup> Must be ordered from Service Parts

(A) = Series A, (B) = Series B, (C) = Series C, & (D) = Series D