

**Parts List, Charging Chart,
Wiring Diagrams**
PAH090 - 120 SERIES
Three Phase
PACKAGE AIR CONDITIONER UNITS



TABLE OF CONTENTS	
PARTS LIST-----	2-3
PARTS DRAWING-----	4-9
CHARGING CHARTS---	10-11
WIRING DIAGRAMS---	12

ISO 9001:2000



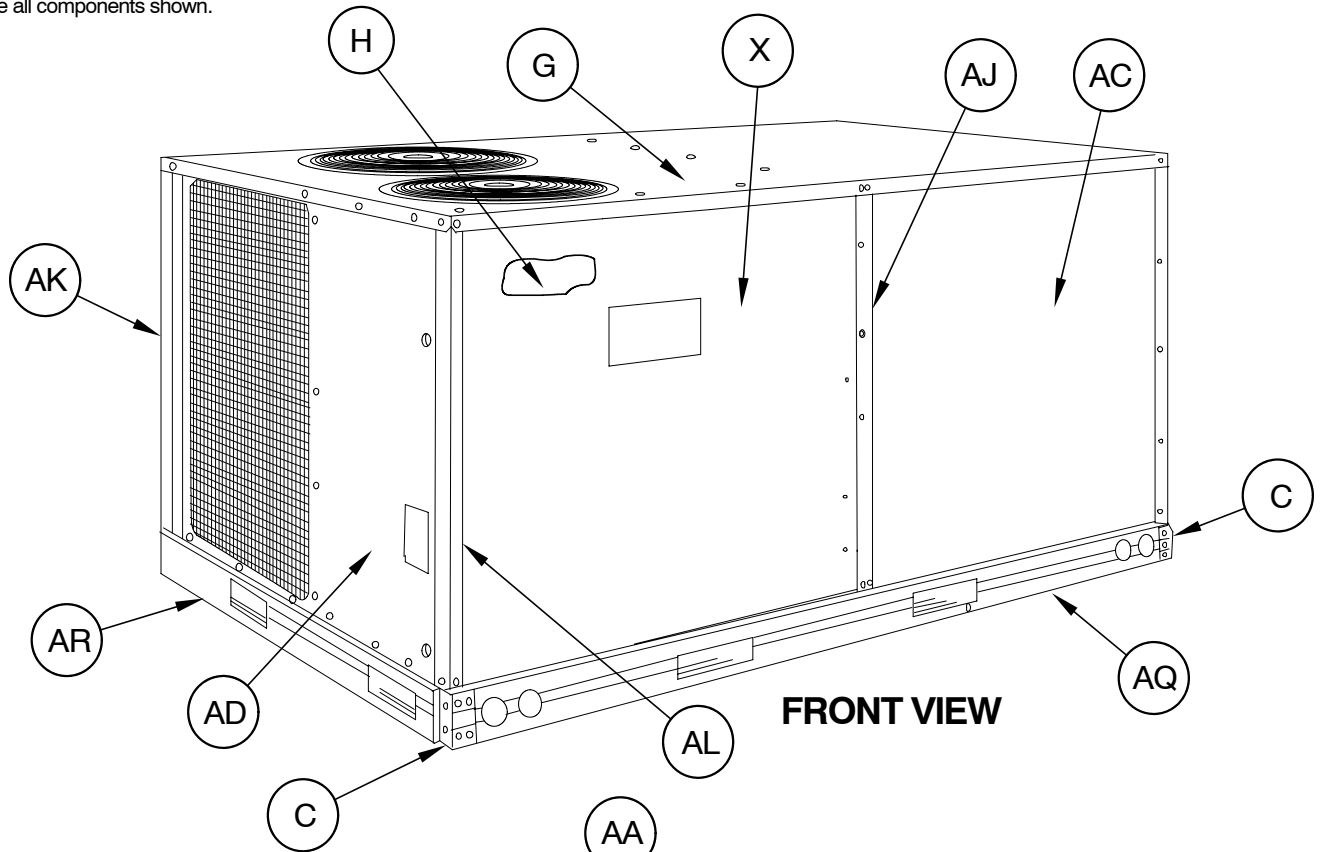
PAE090 - 120 PARTS LIST

KEY NO.	DESCRIPTION	FAST PARTS NO.	PAH090H0A00AAA	PAH102H0A00AAA	PAH120H0A00AAA	PAH090L0A00AAA	PAH102L0A00AAA	PAH120L0A00AAA
			*	*	2	*	*	*
1	COMP SRY582AE	1171976	*	*	2	*	*	*
1	COMP SRH482HC	1175403	*	*	*	*	2	*
1	COMP SRY482HC	1175409	*	2	*	*	*	*
1	COMP SRH582AE	1176505	*	*	*	*	*	2
1	COMP ZR42K3-TF5-230	ZR42K3TF5230	2	*	*	*	*	*
1	COMP ZR42K3-TFD-230	ZR42K3TFD230	*	*	*	2	*	*
3	COIL ASY COND (10 TON) AL	1171541	*	1	1	*	1	1
3	COIL ASY COND (7.5 TON) AL	1171547	1	*	*	1	*	*
4	COIL ASY EVAP (7.5 TON) AL	1171546	1	*	*	1	*	*
4	COIL ASY EVAP (10 TON) AL	1176356	*	1	1	*	1	1
5	MTR BLW 3/208-230/460 2.9 1725	1175721	1	1	*	1	1	*
5	MTR BLW 3/208-230/460 3.7 1750	1175893	*	*	1	*	*	1
6	MTR CND 1/460 1/4 1100	1171334	*	*	*	2	2	*
6	MTR CND 1/230 1/4 1100	1171335	2	2	2	*	*	2
7	FAN C 22" 3B 1/2" 24 INT	1171220	2	2	2	2	2	2
8	CAP RN DUAL OV 370V 10 + 10 MFD	1175708	1	1	1	1	1	1
10	CONTACTOR 2P 20A 24V	1171160	3	3	3	3	3	3
13	TRANS 200/230/460>24 75VA	1171496	1	1	1	1	1	1
14	WHEEL BD15x15x1 REV CV DBL	1171050	1	1	1	1	1	1
17	BOARD TERMINAL LO VOLT 8P	1171488	1	1	1	1	1	1
18	SWITCH LMT 200-M	1171483	1	1	1	1	1	1
37	PLUG WIRING ASY (PL6)	1173199	1	1	1	1	1	1
38	DRIER FILTER	1171555	2	2	2	2	2	2
39	FREEZE STAT O30 C45	1171252	1	1	1	1	1	1
41	RELAY 24V DPST NO	1171809	1	1	1	1	1	1
42	BEARING	1175709	2	2	2	2	2	2
43	KEY	1171322	1	1	1	1	1	1
44	PULLEY (BLW)	1175315	1	1	*	1	1	*
44	PULLEY (BLW)	1175896	*	*	1	*	*	1
45	PULLEY (MTR)	1171562	*	*	1	*	*	1
45	PULLEY (MTR)	1175720	1	1	*	1	1	*
46	BELT	BLTA48	*	1	*	*	1	*
46	BELT	BLTA49	1	*	*	1	*	*
46	BELT	BLTA51	*	*	1	*	*	1
47	SHAFT	1175730	1	1	1	1	1	1
48	SWITCH PRESS (LOW)	1175308	2	2	2	2	2	2
49	RELAY 24V DPST 1 NO & 1 NC	1171436	1	1	1	1	1	1
50	SWITCH PRESS (HIGH)	1171805	2	2	2	2	2	2
52	TERMINAL BLOCK	1175339	1	1	1	1	1	1
53	BREAKER 3.2A 1 POLE 250V	1171114	1	1	1	1	1	1
61	RELAY SENSING	1171434	2	2	2	2	2	2
A	FILTER AIR 16X20X2 DISP	1171230	4	*	*	4	*	*
A	FILTER AIR 20X20X2 DISP	1176306	*	4	4	*	4	4
AA	PANEL FILTER DOOR (UPPER)	1171385	*	1	1	*	1	1
AA	PANEL FILTER DOOR (UPPER)	1171386	1	*	*	1	*	*
AB	PANEL INDOOR END	1171308	*	1	1	*	1	1
AB	PANEL INDOOR END	1171375	1	*	*	1	*	*
AC	PANEL NDOOR FAN ACCESS	1171004	1	*	*	1	*	*
AC	PANEL NDOOR FAN ACCESS	1171364	*	1	1	*	1	1
AD	PANEL OUTDOOR (POWER)	1171003	1	*	*	1	*	*
AD	PANEL OUTDOOR (POWER)	1171368	*	1	1	*	1	1
AE	PLATE (FAN MTR SIDE)	1171227	*	1	1	*	1	1
AE	PLATE (FAN MTR SIDE)	1171395	1	*	*	1	*	*
AF	PLATE (FAN SIDE)	1171218	*	1	1	*	1	1
AF	PLATE (FAN SIDE)	1171396	1	*	*	1	*	*

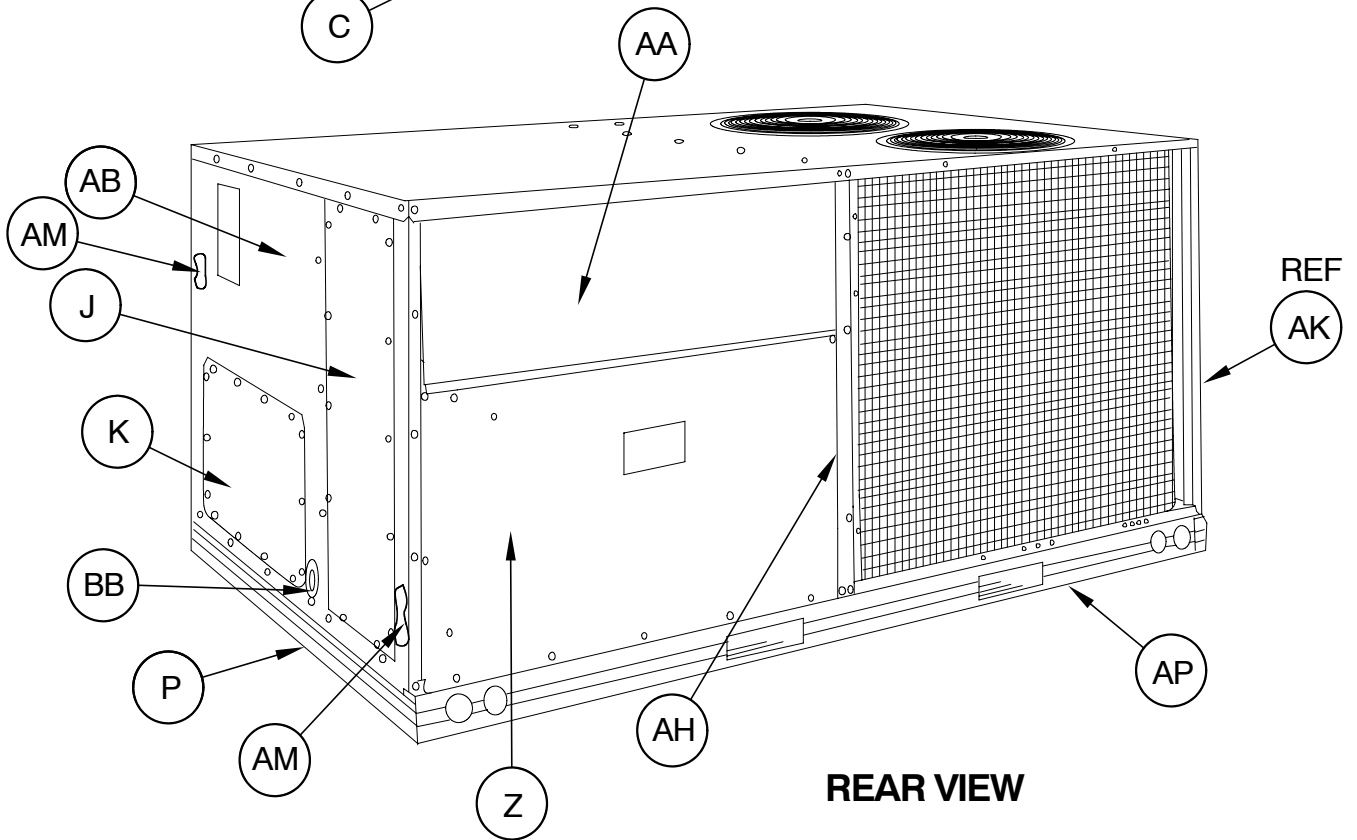
PAE090 - 120 PARTS LIST (continued)

KEY NO.	DESCRIPTION	FAST PARTS NO.	PAH090H0A00AAA	PAH102H0A00AAA	PAH120H0A00AAA	PAH090L0A00AAA	PAH102L0A00AAA	PAH120L0A00AAA
AG	PLATE WIRING	1171373	1	1	1	1	1	1
AH	POST CENTER (FILTER SIDE)	1171109	*	1	1	*	1	1
AH	POST CENTER (FILTER SIDE)	1171406	1	*	*	1	*	*
AJ	POST CENTER (FAN ACCESS)	1171110	1	*	*	1	*	*
AJ	POST CENTER (FAN ACCESS)	1171407	*	1	1	*	1	1
AK	POST CORNER (COIL)	1171174	*	1	1	*	1	1
AK	POST CORNER (COIL)	1171177	1	*	*	1	*	*
AL	POST CORNER (CONTL BOX SIDE)	1171172	*	1	1	*	1	1
AL	POST CORNER (CONTL BOX SIDE)	1171173	1	*	*	1	*	*
AM	POST CORNER (INDOOR END)	1171175	2	*	*	2	*	*
AM	POST CORNER (INDOOR END)	1171309	*	2	2	2	2	2
AN	RACEWAY (OFM)	1171428	1	1	1	1	1	1
AP	RAIL BASE (FILTER ACCESS)	1171033	1	1	1	1	1	1
AQ	RAIL BASE (FAN ACCESS)	1171031	1	1	1	1	1	1
AR	RAIL BASE	1171032	*	1	1	*	1	1
AR	RAIL BASE (ICP)	1175313	1	*	*	1	*	*
AV	PLATE ASY IFM MTR	1175664	1	*	*	1	*	*
AV	PLATE ASY IFM MTR	1175891	*	1	1	*	1	1
AW	SCROLL (FAN)	1171223	*	1	1	*	1	1
AW	SCROLL (FAN)	1171445	1	*	*	1	*	*
B	COVER HEAT	1171372	2	2	2	2	2	2
BA	BOLT COMP MTG	1171056	8	8	8	8	8	8
BB	DRAIN LINE SEAL (ROUND)	1171447	1	1	1	1	1	1
BC	BRACKET MTR SUPPORT	1175711	1	*	*	1	*	*
BC	BRACKET MTR ADJUSTMENT	1175913	*	1	1	*	1	1
BD	BRACKET ASY BRG	1175712	2	2	2	2	2	2
BE	BLOWER ASY	1172637	1	*	*	1	*	*
BE	BLOWER ASY	1175411	*	1	1	*	1	1
BG	BRACKET MTR MOUNT	1175911	*	2	2	*	2	2
BH	BRACKET MOTOR	1175912	*	2	2	*	2	2
BJ	BOLT CARRIAGE 5/16-18 X 12	1175914	*	2	2	*	2	2
C	BRACKET BASE (CORNER)	1171071	2	2	2	2	2	2
D	BRACKET COIL (HEADER END)	1171070	1	1	1	1	1	1
E	BRACKET HEAT	1171304	1	1	1	1	1	1
F	STRAP FORMED CAP	1171537	1	1	1	1	1	1
G	COVER ASY (TOP)	1171365	1	1	1	1	1	1
H	COVER (CONTROL BOX)	1171169	1	1	1	1	1	1
J	COVER ASY (RETURN AIR)	1171182	1	1	1	1	1	1
K	COVER ASY (SUPPLY AIR)	1171180	*	1	1	*	1	1
K	COVER ASY (SUPPLY AIR)	1171181	1	*	*	1	*	*
M	GRILLE (OUTLET)	1171267	2	2	2	2	2	2
N	GROMMET COMPRESSOR 1.25"DIA	1171269	*	8	8	*	8	8
N	GROMMET COMPRESSOR 1.62"DIA	1171270	8	*	*	8	*	*
P	GUARD (BASERAIL)	1171206	1	1	1	1	1	1
W	PAN CONDENSATE	1171359	1	1	1	1	1	1
X	PANEL ACCESS (CNTRL BOX)	1171362	1	*	*	1	*	*
X	PANEL ACCESS (CNTRL BOX)	1171363	*	1	1	*	1	1
Z	PANEL FILTER (LOWER)	1171382	1	1	1	1	1	1
PARTS NOT SHOWN								
)	PLUG ASY (ECON)	1171405	1	1	1	1	1	1
)	HARNESS ASY (COMP 1 & 2)	1171520	*	*	1	*	*	1
)	HARNESS ASY (COMP 1 & 2)	1175150	1	1	*	1	1	*
)	PLUG ASY (PAC)	1175407	1	1	1	1	1	1
)	HARNESS ASY (YAC & PAC PIG TAIL)	1175408	1	1	1	1	1	1
)	HARNESS ASY (IFM)	1175707	1	1	1	1	1	1

NOTE: This illustration is for reference only. Your unit may differ in appearance or may not include all components shown.

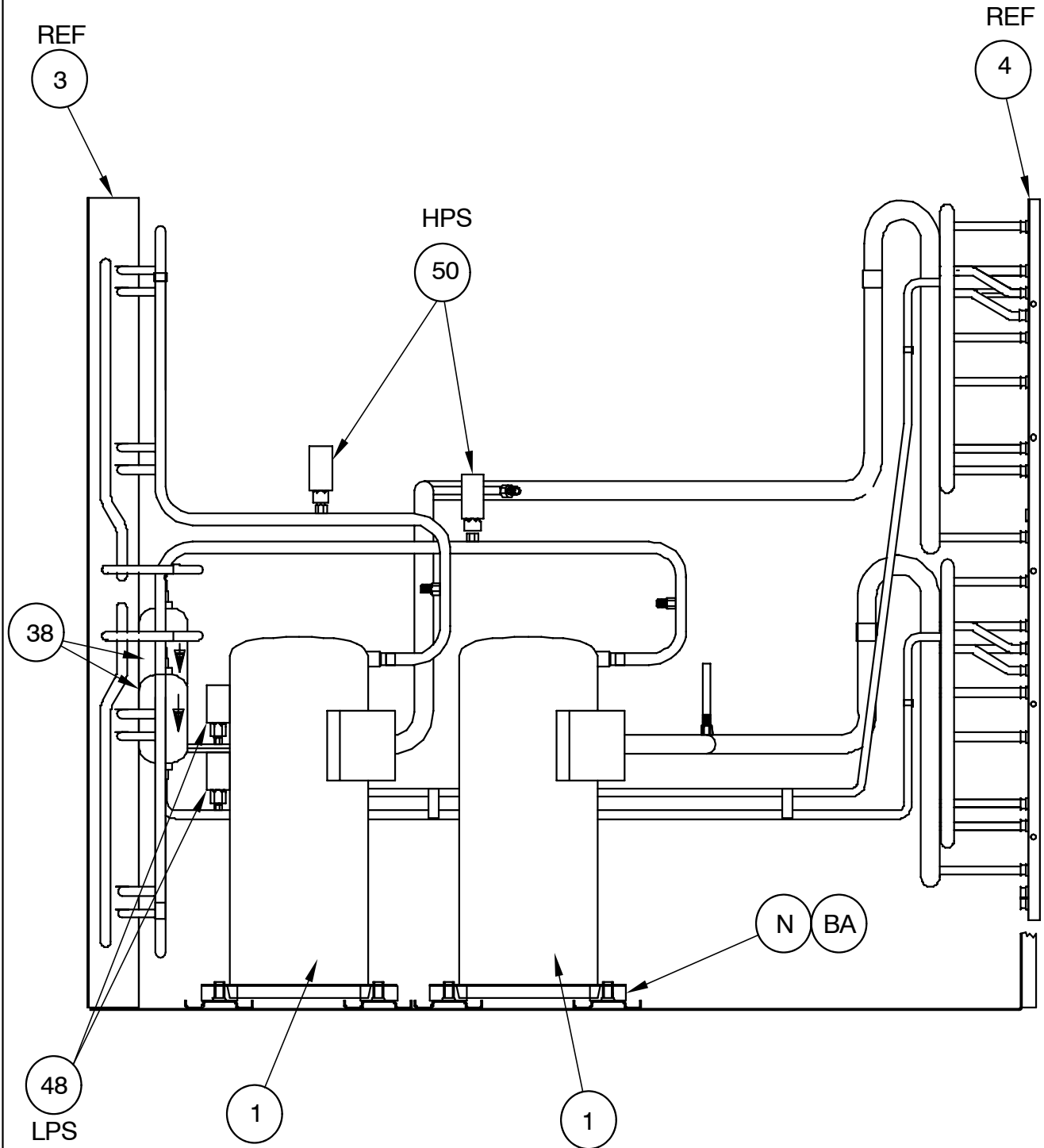


FRONT VIEW

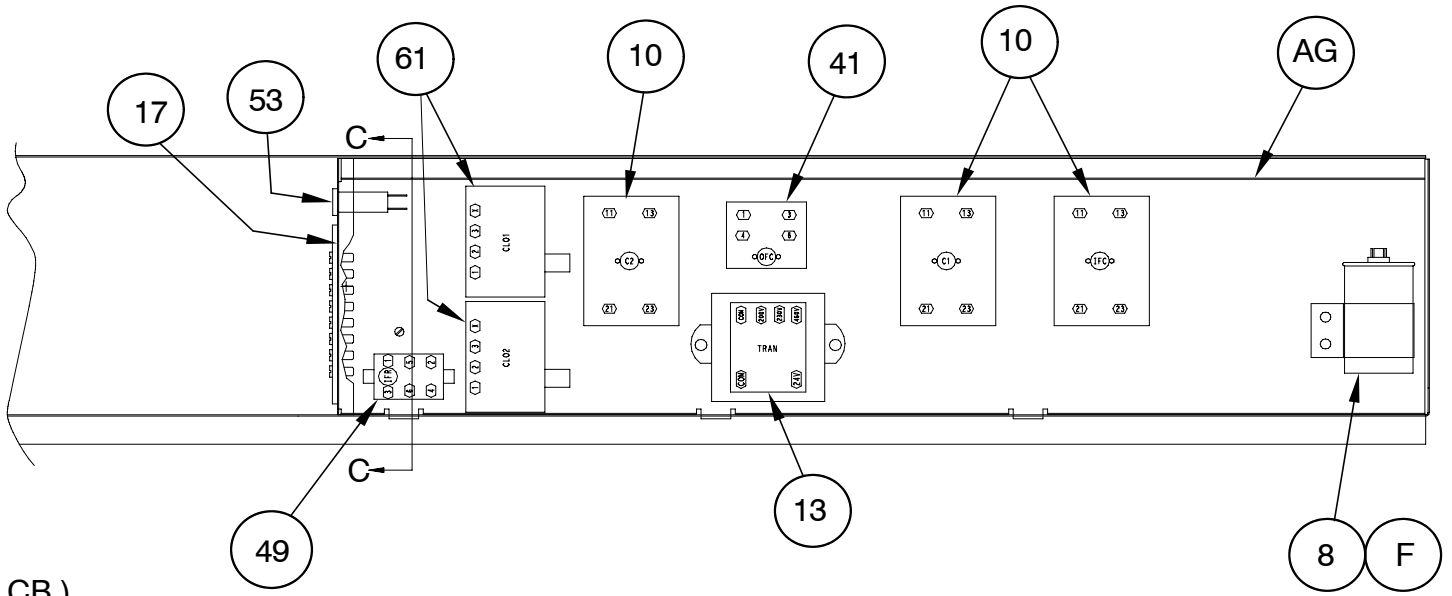


REAR VIEW

NOTE: This illustration is for reference only. Your unit may differ in appearance or may not include all components shown.

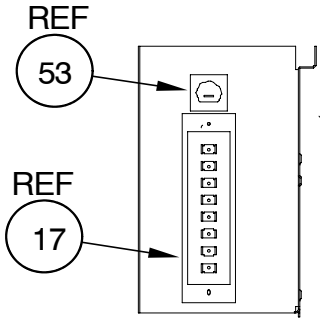


NOTE: This illustration is for reference only. Your unit may differ in appearance or may not include all components shown.

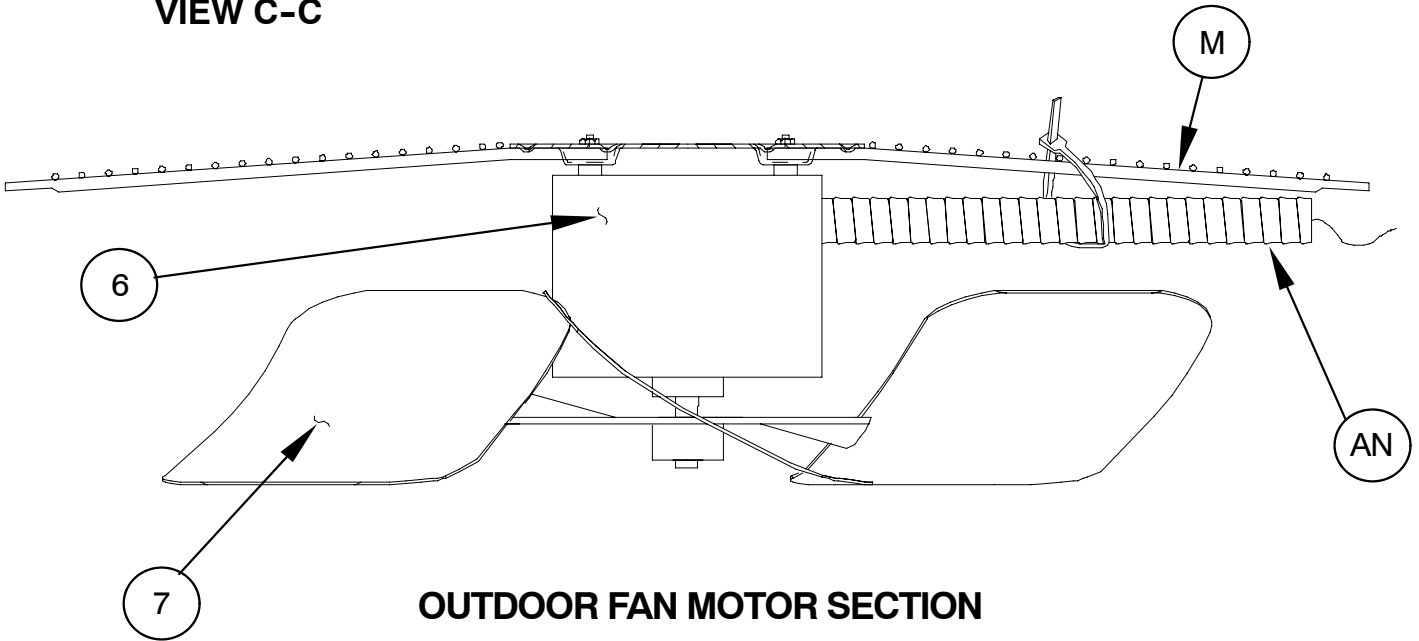


(CB)

CONTROL BOX ASY.

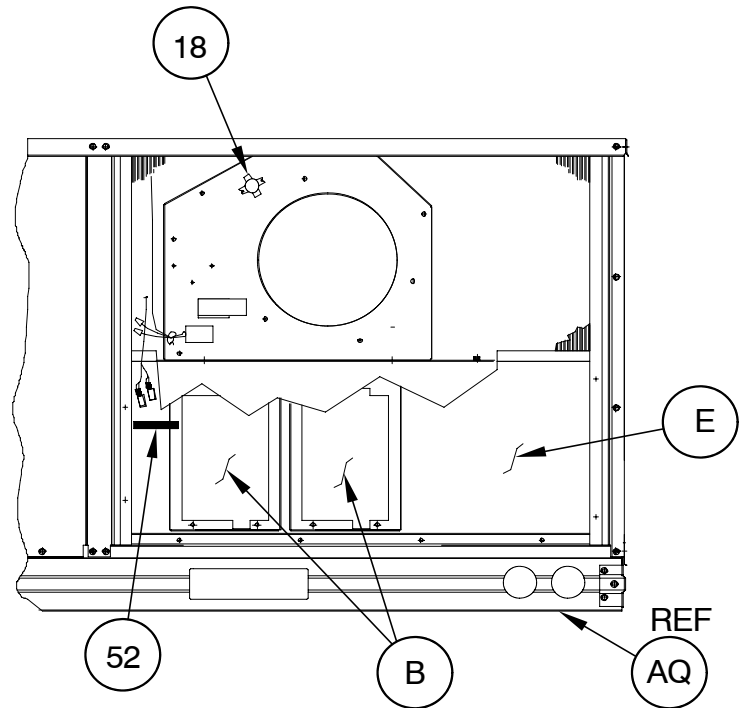
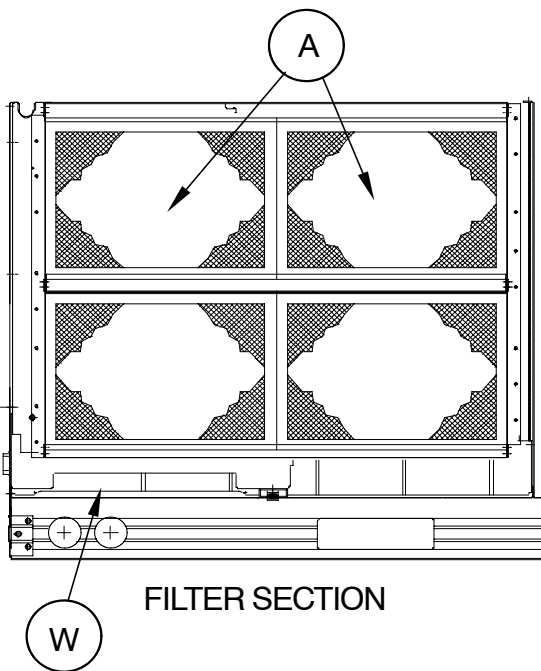
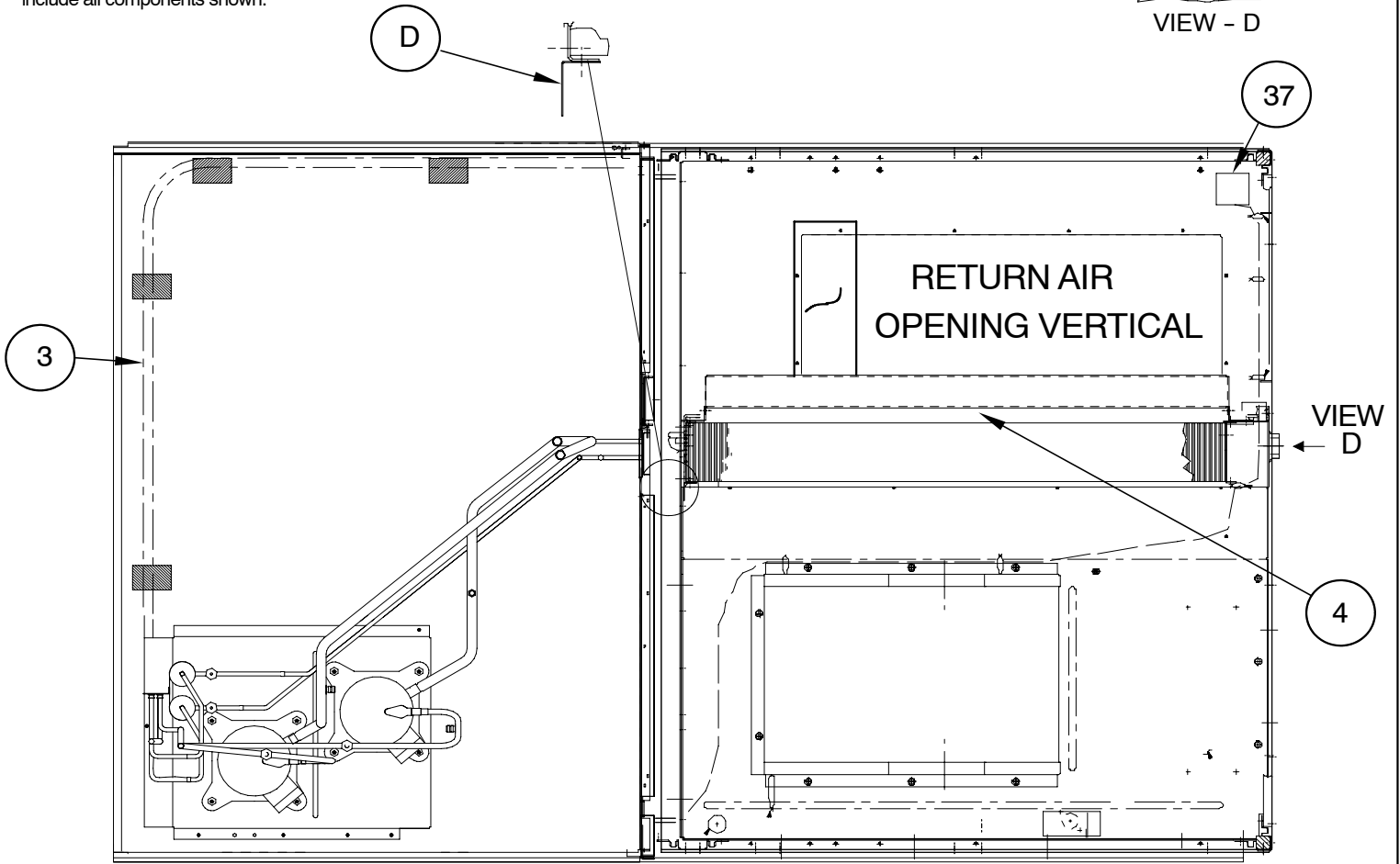
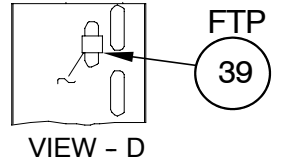


VIEW C-C



OUTDOOR FAN MOTOR SECTION

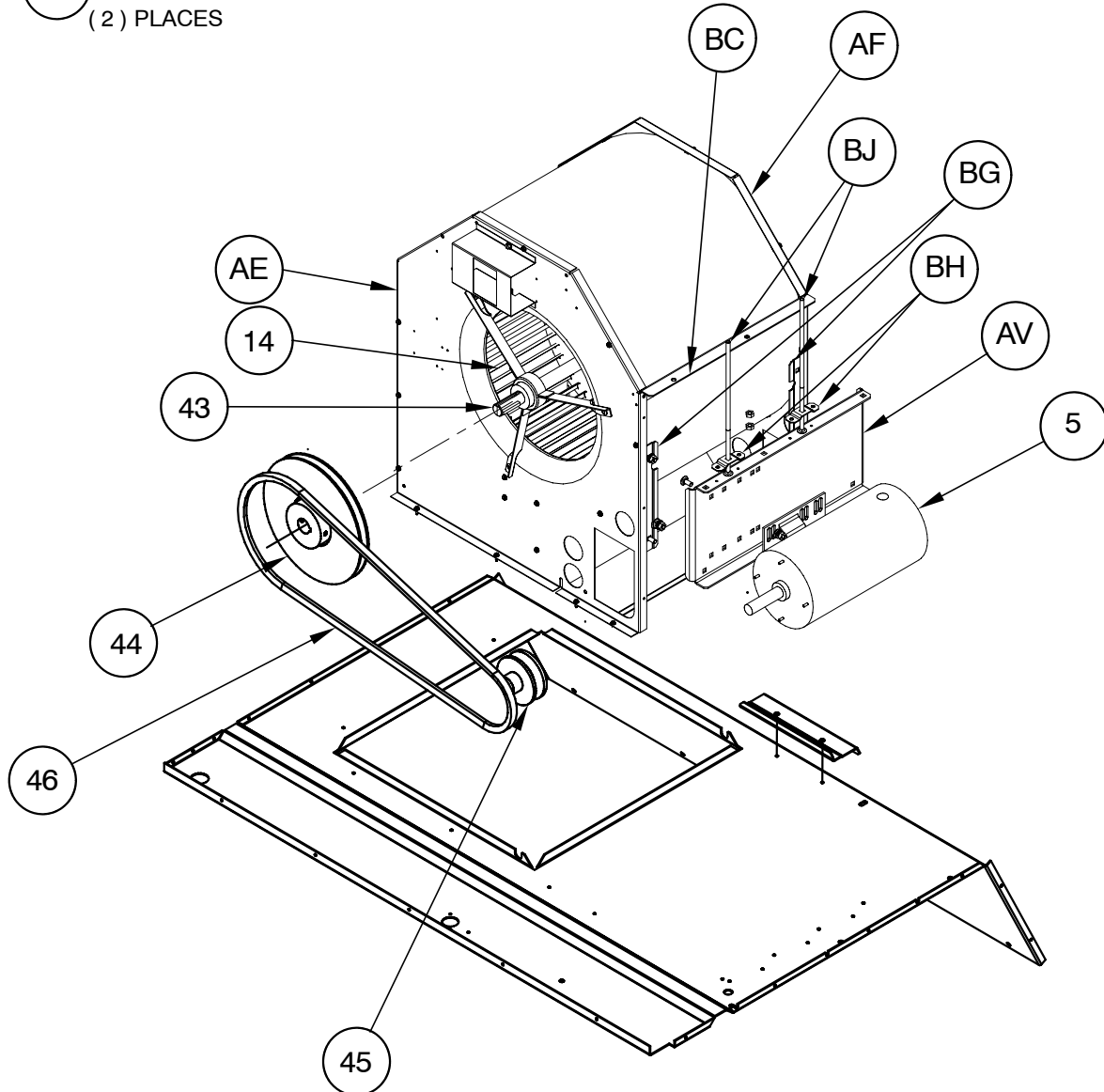
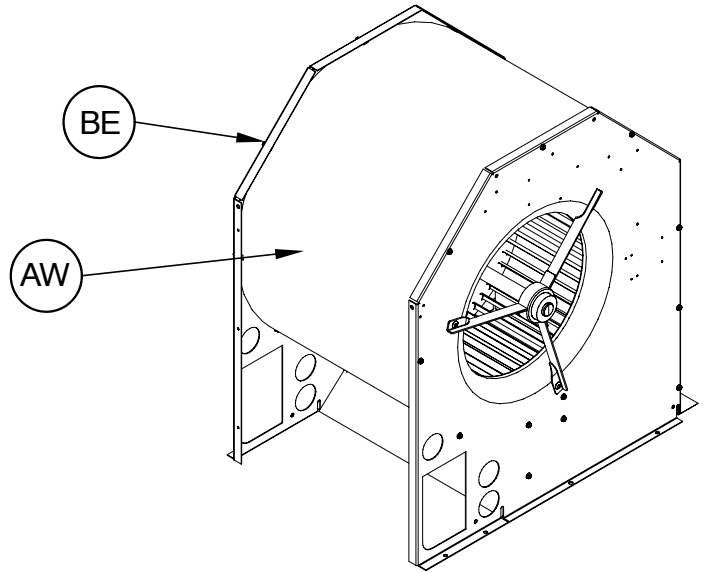
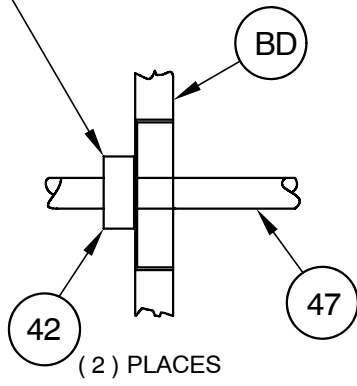
NOTE: This illustration is for reference only. Your unit may differ in appearance or may not include all components shown.



80-51-65

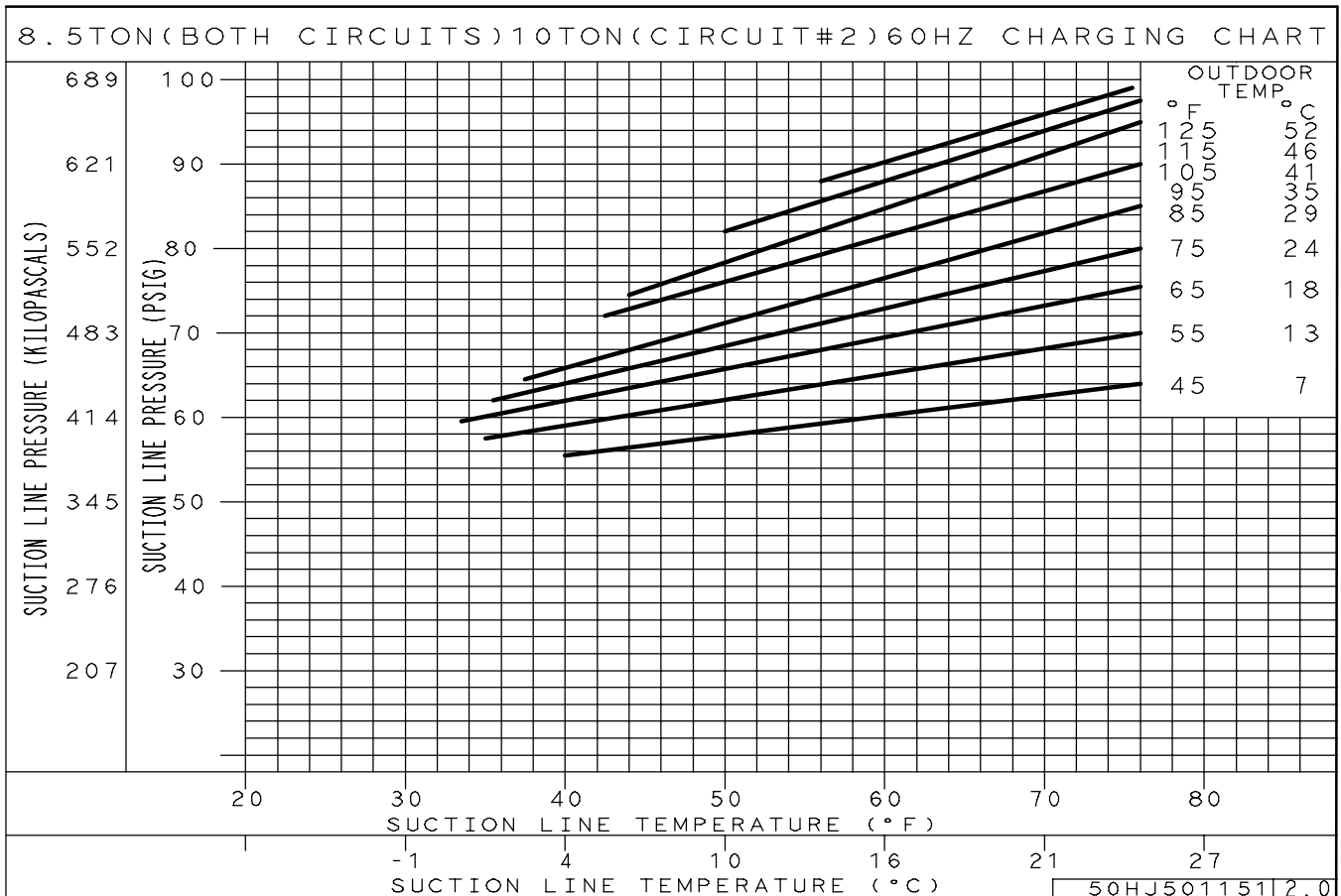
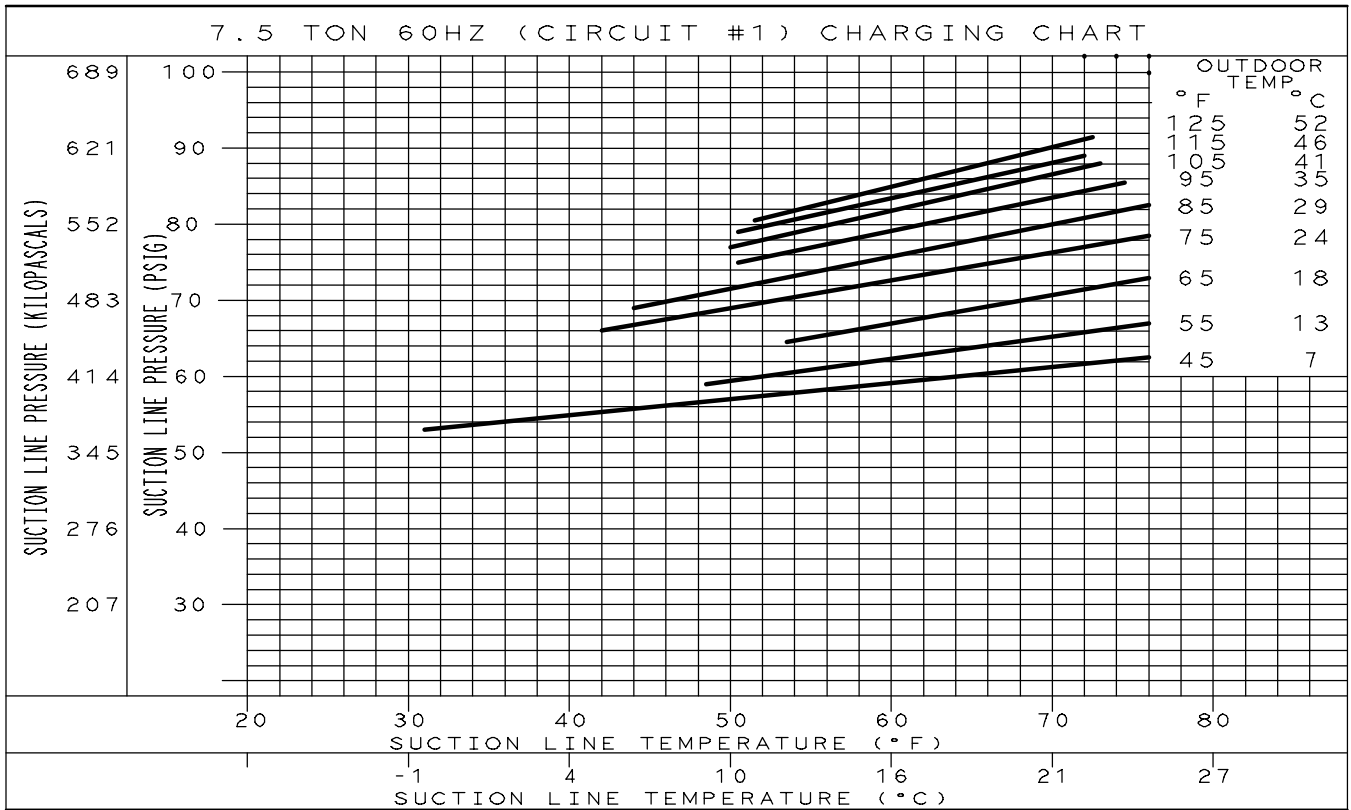
NOTE: This illustration is for reference only. Your unit may differ in appearance or may not include all components shown.

LOCKING COLLAR



INDOOR FAN SECTION

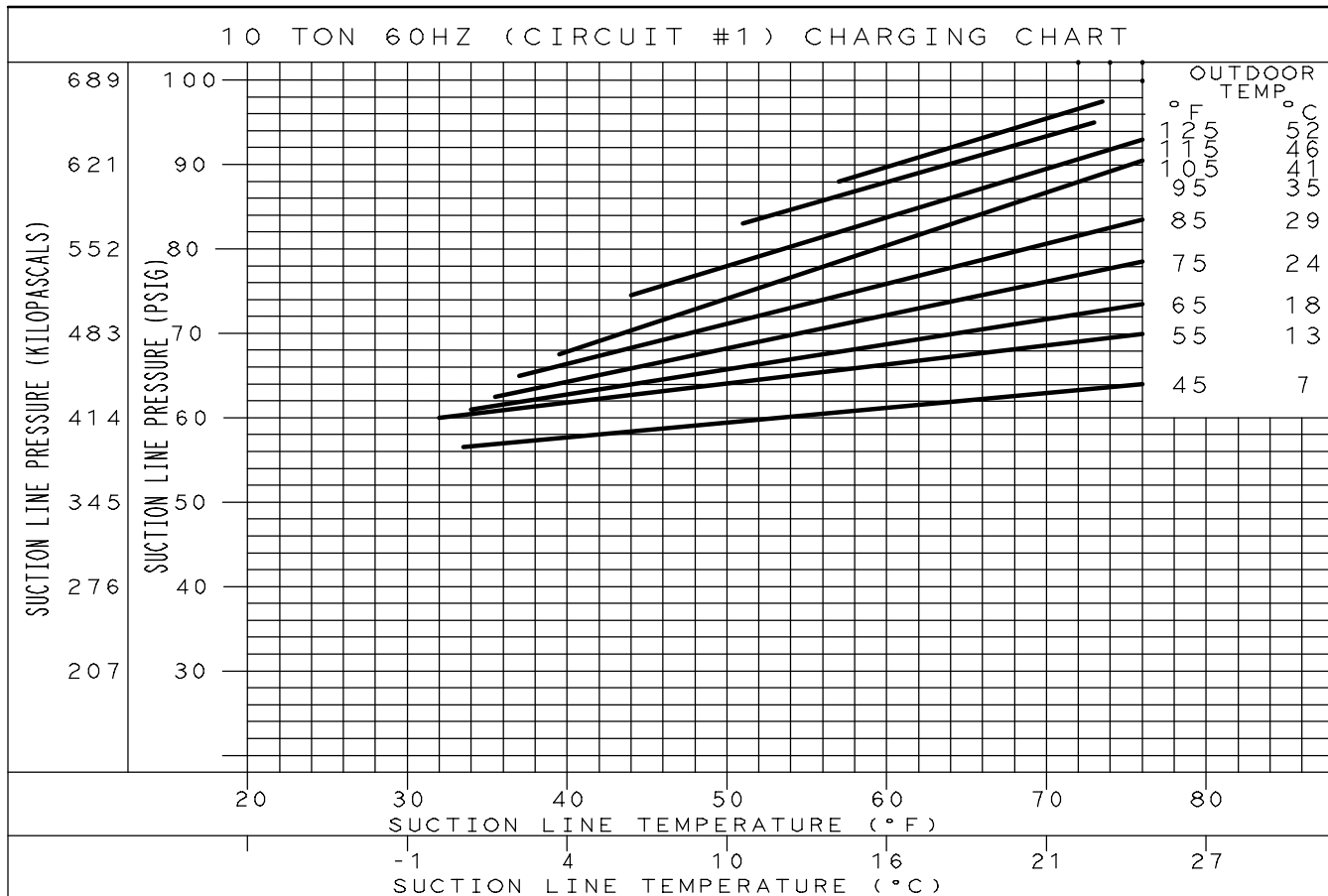
PAH090 - 120

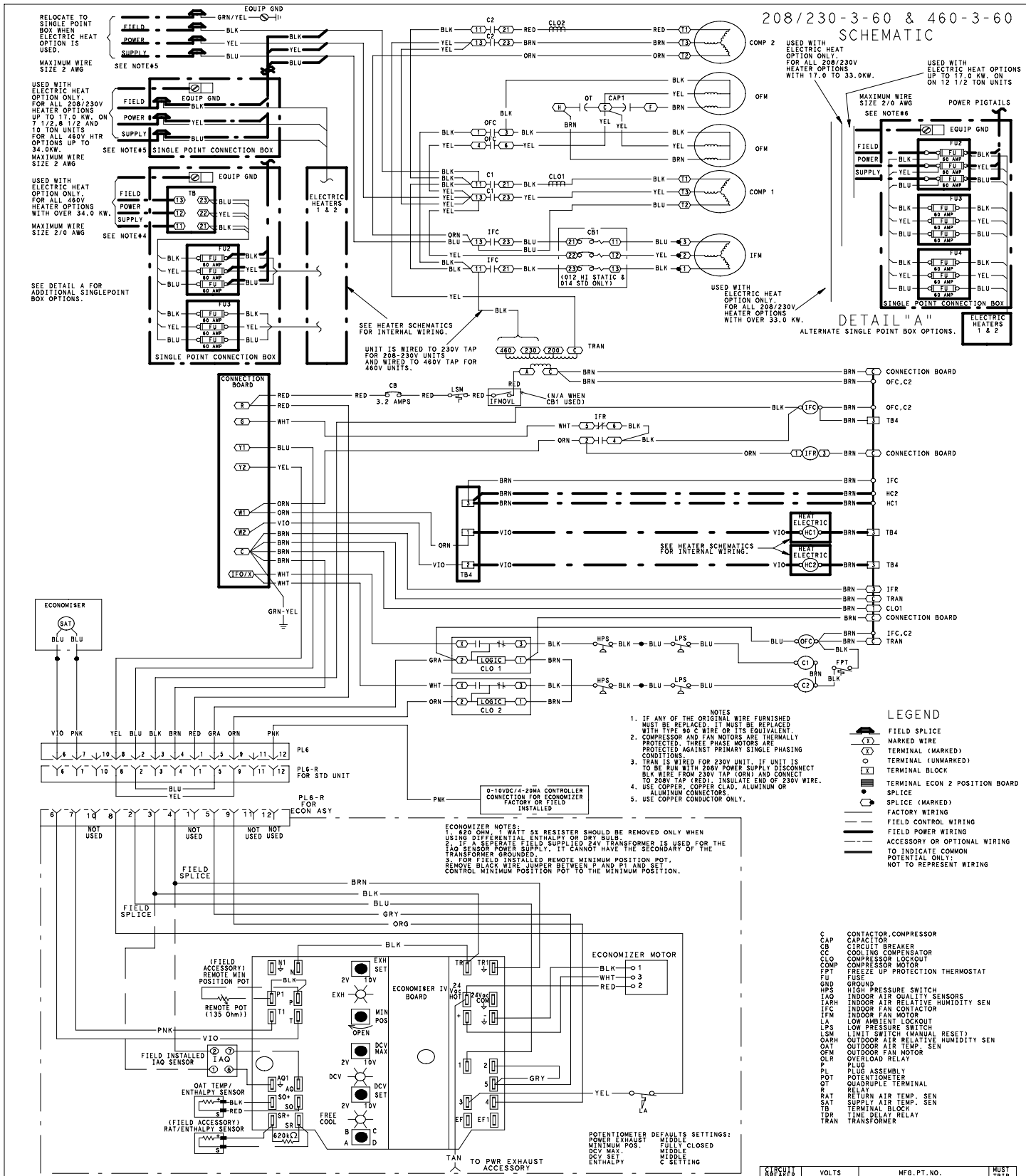


50HJ5011512.0

PAH120

Circuit #1 (see previous page for Circuit #2)





FRUIT SAEFFER	VOLTS	MFG. PT. NO.	MUST TRIP AMPS
CB	24V	POTTER & BRUMFIELD	3.2
CB1 (0.14 STD.)	460-3-60	HEINEMANN AIRPAX CF3-2228-41 219-3-2600-486	0.5

