

Parts List, Charging Chart, Wiring Diagrams

PAE090 - 150 SERIES

PACKAGE AIR CONDITIONER UNITS



TABLE OF CONTENTS

PARTS LIST-----	2-5
PARTS DRAWING-----	6-10
CHARGING CHARTS---	11-13
WIRING DIAGRAMS---	14-15



PAE090 PAE102 PARTS LIST

KEY NO.	DESCRIPTION	FAST PARTS NO.	PAE090H0A00AAA	PAE102H0A00AAA	PAE090L0A00AAA	PAE102L0A00AAA
1	COMP CR42K6-TF5-220	1171142	2	*	*	*
1	COMP CR42K6-TFD-220	1171141	*	*	2	*
1	COMP SRH552HE	1175404	*	*	*	1
1	COMP SRY552HE	1175410	*	1	*	*
2	COMP SRH482HC	1175403	*	*	*	1
2	COMP SRY482AC	1175792	*	1	*	*
3	COIL ASY COND (7.5 TON) AL	1171547	1	*	1	*
3	COIL ASY COND (8.5 TON) AL	1175398	*	1	*	1
4	COIL ASY EVAP (7.5 TON) AL	1171546	1	*	1	*
4	COIL ASY EVAP (8.5 TON) AL	1175393	*	1	*	1
5	MTR BLW 3/230/460 2.4 1750	1175478	1	1	1	1
6	MTR CND 1/230 1/4 1100	1171335	2	2	*	*
6	MTR CND 1/460 1/4 1100	1171334	*	*	*	2
6	MTR CND 1/460 1/4 900	1171551	*	*	2	*
7	FAN C 22" 3B 1/2" 24 INT	1171220	2	2	2	2
8	CAP RN DUAL OV 370V 10 + 10 MFD	1175708	1	1	1	1
10	CONTACTOR 2P 20A 24V	1171160	3	3	3	3
13	TRANS 200/230/460>24 75VA	1171496	1	1	1	1
14	WHEEL BD15x15x1 REV CV DBL	1171050	1	1	1	1
17	BOARD TERMINAL LO VOLT 8P	1171488	1	1	1	1
18	SWITCH LMT 200-M	1171483	1	1	1	1
37	PLUG WIRING ASY (PL6)	1173199	1	1	1	1
38	DRIER FILTER	1171555	2	2	2	2
39	FREEZE STAT O30 C45	1171252	1	1	1	1
41	RELAY 24V DPST NO	1171809	1	1	1	1
42	BEARING	1175709	2	2	2	2
43	KEY	1171322	1	1	1	1
44	PULLEY (BLW)	1175315	1	1	1	1
45	PULLEY (MTR)	1175832	1	1	1	1
46	BELT	1176299	1	1	1	1
47	SHAFT	1175730	1	1	1	1
48	SWITCH PRESS (LOW)	1175308	2	2	2	2
49	RELAY 24V DPST 1 NO & 1 NC	1171436	1	1	1	1
50	SWITCH PRESS (HIGH)	1171805	2	2	2	2
52	TERMINAL BLOCK	1175339	1	1	1	1
53	BREAKER 3.2A 1 POLE 250V	1171114	1	1	1	1
A	FILTER AIR 16X20X2 DISP	1171230	4	4	4	4
AA	PANEL FILTER DOOR (UPPER)	1171386	1	1	1	1
AB	PANEL INDOOR END	1171375	1	1	1	1
AC	PANEL NDOOR FAN ACCESS	1171004	1	1	1	1
AD	PANEL OUTDOOR (POWER)	1171003	1	1	1	1
AE	PLATE (FAN MTR SIDE)	1171395	1	1	1	1
AF	PLATE (FAN SIDE)	1171396	1	1	1	1
AG	PLATE WIRING	1171373	1	1	1	1
AH	POST CENTER (FILTER SIDE)	1171406	1	1	1	1
AJ	POST CENTER (FAN ACCESS)	1171110	1	1	1	1
AK	POST CORNER (COIL)	1171177	1	1	1	1
AL	POST CORNER (CONTL BOX SIDE)	1171173	1	1	1	1
AM	POST CORNER (INDOOR END)	1171175	2	2	2	2

PAE090 PAE102 PARTS LIST (continued)

KEY NO.	DESCRIPTION	FAST PARTS NO.	PAE090H0A00AAA	PAE102H0A00AAA	PAE090L0A00AAA	PAE102L0A00AAA
AN	RACEWAY (OFM)	1171428	1	1	1	1
AP	RAIL BASE (FILTER ACCESS)	1171033	1	1	1	1
AQ	RAIL BASE (FAN ACCESS)	1171031	1	1	1	1
AR	RAIL BASE (ICP)	1175313	1	1	1	1
AV	PLATE ASY IFM MTR	1175664	1	1	1	1
AW	SCROLL (FAN)	1171445	1	1	1	1
B	COVER HEAT	1171372	2	2	2	2
BA	BOLT COMP MTG	1171056	8	8	8	8
BB	DRAIN LINE SEAL (ROUND)	1171447	1	1	1	1
BC	BRACKET MTR SUPPORT	1175711	1	1	1	1
BD	BRACKET ASY BRG	1175712	2	2	2	2
BE	BLOWER ASY	1172637	1	1	1	1
C	BRACKET BASE (CORNER)	1171071	2	2	2	2
D	BRACKET COIL (HEADER END)	1171070	1	1	1	1
E	BRACKET HEAT	1171304	1	1	1	1
F	STRAP FORMED CAP	1171537	1	1	1	1
G	COVER ASY (TOP)	1171365	1	1	1	1
H	COVER (CONTROL BOX)	1171169	1	1	1	1
J	COVER ASY (RETURN AIR)	1171182	1	1	1	1
K	COVER ASY (SUPPLY AIR)	1171181	1	1	1	1
M	GRILLE (OUTLET)	1171267	2	2	2	2
N	GROMMET COMPRESSOR 1.25"DIA	1171269	8	8	8	8
P	GUARD (BASERAIL)	1171206	1	1	1	1
W	PAN CONDENSATE	1171359	1	1	1	1
X	PANEL ACCESS (CNTRL BOX)	1171362	1	1	1	1
Z	PANEL FILTER (LOWER)	1171382	1	1	1	1
PARTS NOT SHOWN						
)	(HARNES ASY (COMP 1 & 2)	1175150	1	*	1	*
)	(HARNES ASY (COMP 1 & 2)	1175391	*	1	*	1
)	(HARNES ASY (IFM)	1175707	*	*	1	1
)	(HARNES ASY (YAC & PAC PIG TAIL)	1175408	1	1	1	1
)	(PLUG ASY (ECON)	1171405	1	1	1	1
)	(PLUG ASY (PAC)	1175407	1	1	1	1

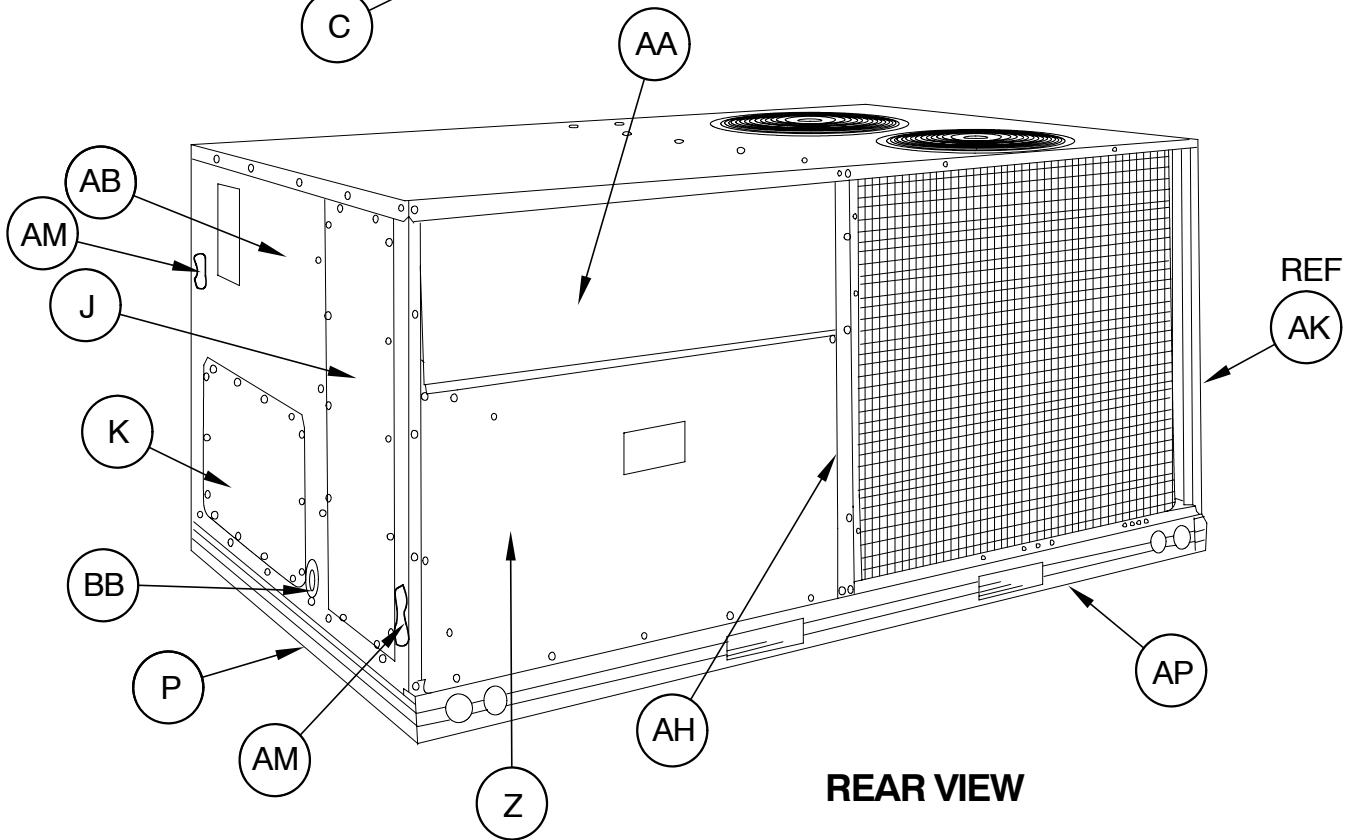
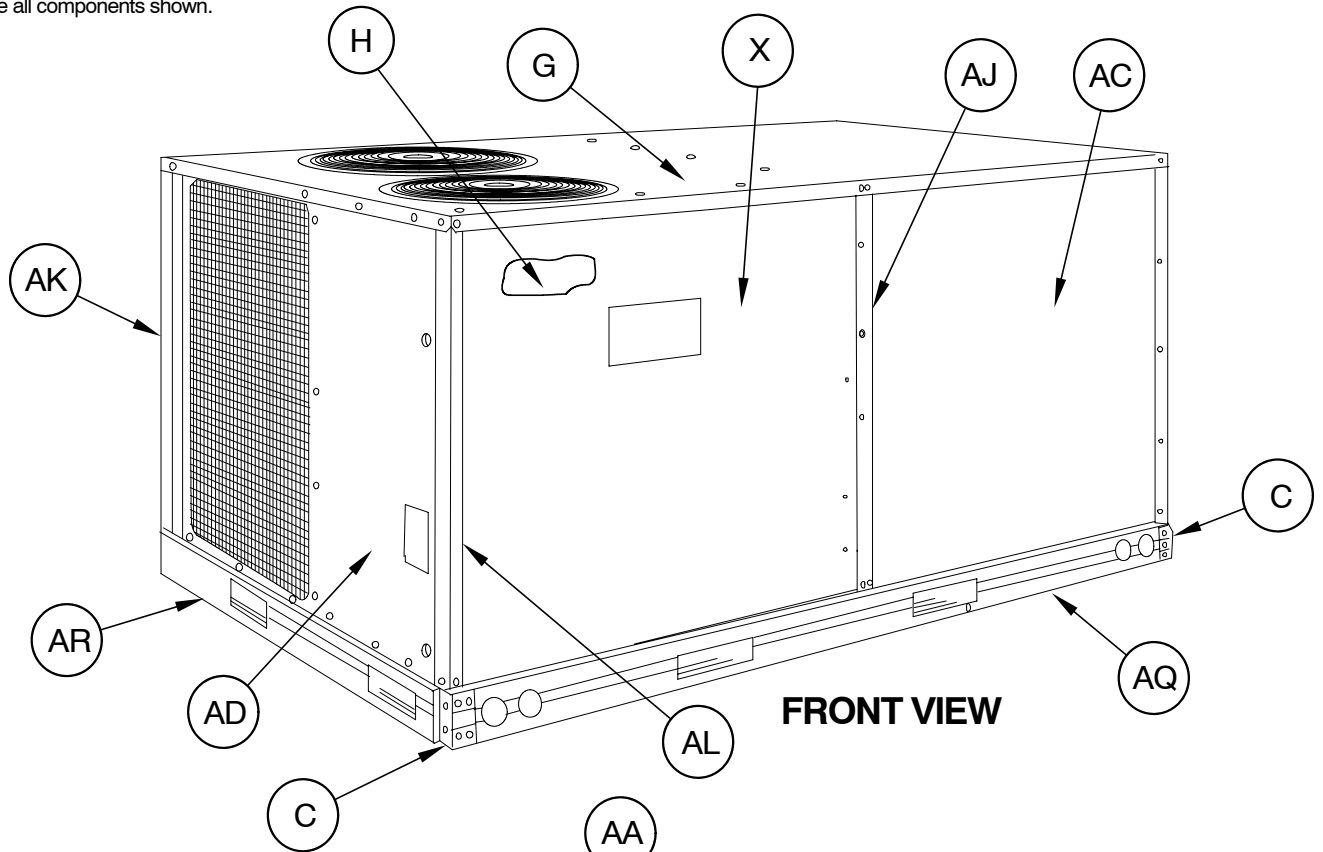
PAE120 PAE150 PARTS LIST

KEY NO.	DESCRIPTION	FAST PARTS NO.	PAE120H0A00AAA	PAE150H0A00AAA	PAE120L0A00AAA	PAE150L0A00AAA
1	COMP SRY552HE	1175410	2	*	*	*
1	COMP SRY552HE	1175404	*	*	2	*
1	COMP ZR68KC-TF5-250	1171559	*	2	*	*
1	COMP ZR68KC-TFD-250	1171560	*	*	*	2
3	COIL ASY COND (10 TON) AL	1171541	1	*	1	*
3	COIL ASY COND (12.5 TON) AL	1171129	*	1	*	1
4	COIL ASY EVAP (10 TON) AL	1171564	1	*	1	*
4	COIL ASY EVAP (12.5 TON) AL	1171123	*	1	*	1
5	MTR BLW 3/230/460 2.4 1750	1175478	1	*	1	*
5	MTR BLW 3/230/460 2.4 1750	1175893	*	1	*	1
6	MTR CND 1/230 1/4 1100	1171335	2	2	*	*
6	MTR CND 1/460 1/4 1100	1171334	*	*	*	2
6	MTR CND 1/460 1/4 900	1171551	*	*	2	*
7	FAN C 22" 3B 1/2" 24 INT	1171220	2	2	2	2
8	CAP RN DUAL OV 370V 10 + 10 MFD	1175708	1	1	1	1
10	CONTACTOR 2P 20A 24V	1171160	3	*	3	3
10	CONTACTOR 2P 30A 24V	1171554	*	2	*	*
11	CONTACTOR 2P 20A 24V	1171160	*	1	*	*
13	TRANS 200/230/460>24 75VA	1171496	1	1	1	1
14	WHEEL BD15x15x1 REV CV DBL	1171050	1	1	1	1
17	BOARD TERMINAL LO VOLT 8P	1171488	1	1	1	1
18	SWITCH LMT 200-M	1171483	1	1	1	1
37	PLUG WIRING ASY (PL6)	1173199	1	1	1	1
38	DRIER FILTER	1171555	2	2	2	2
39	FREEZE STAT O30 C45	1171252	1	1	1	1
41	RELAY 24V DPST NO	1171809	1	1	1	1
42	BEARING	1175709	2	2	2	2
43	KEY	1171322	1	1	1	1
44	PULLEY (BLW)	1175315	1	*	1	*
44	PULLEY (BLW)	1175896	*	1	*	1
45	PULLEY (MTR)	1175494	1	*	1	*
45	PULLEY (MTR)	1171562	*	1	*	1
46	BELT	1065684	1	*	1	*
46	BELT	1171515	*	1	*	1
47	SHAFT	1175730	1	1	1	1
48	SWITCH PRESS (LOW)	1175308	2	2	2	2
49	RELAY 24V DPST 1 NO & 1 NC	1171436	1	1	1	1
50	SWITCH PRESS (HIGH)	1171805	2	2	2	2
52	TERMINAL BLOCK	1175339	1	1	1	1
53	BREAKER 3.2A 1 POLE 250V	1171114	1	1	1	1
A	FILTER 20X20X2	1176306	4	4	4	4
AA	PANEL FILTER DOOR (UPPER)	1171385	1	1	1	1
AB	PANEL INDOOR END	1171308	1	1	1	1
AC	PANEL NDOOR FAN ACCESS	1171364	1	1	1	1
AD	PANEL OUTDOOR (POWER)	1171368	1	1	1	1
AE	PLATE (FAN MTR SIDE)	1171227	1	1	1	1
AF	PLATE (FAN SIDE)	1171218	1	1	1	1
AG	PLATE WIRING	1171373	1	1	1	1
AH	POST CENTER (FILTER SIDE)	1171109	1	1	1	1

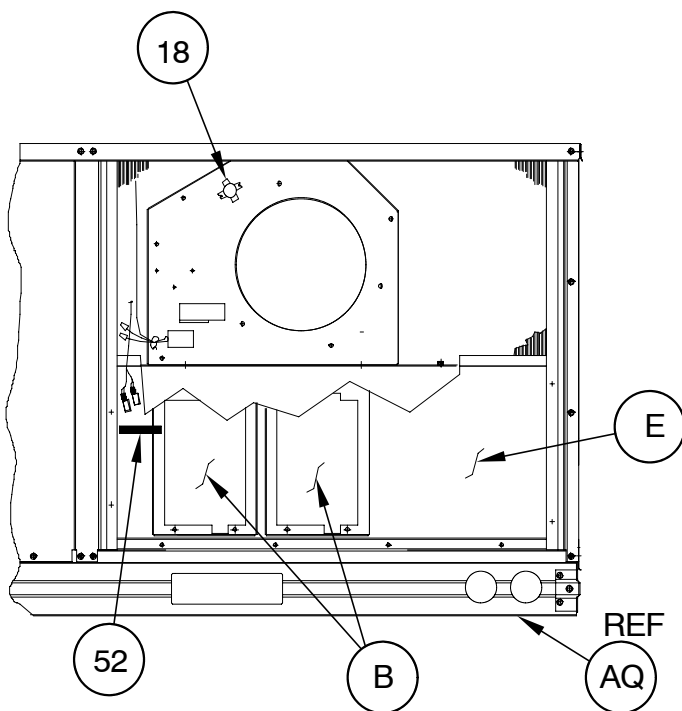
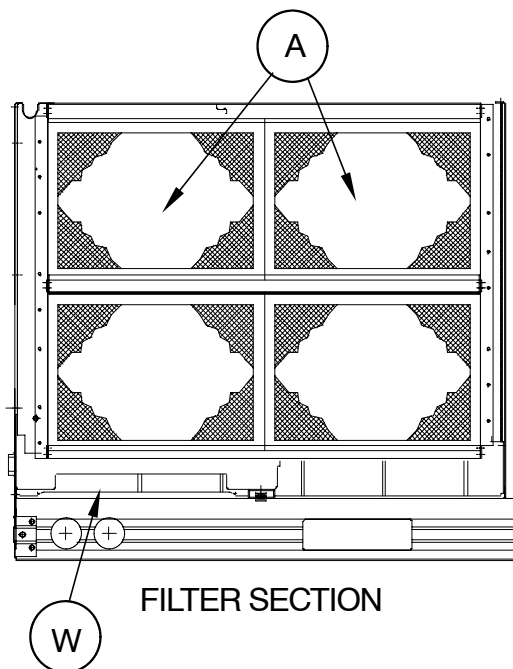
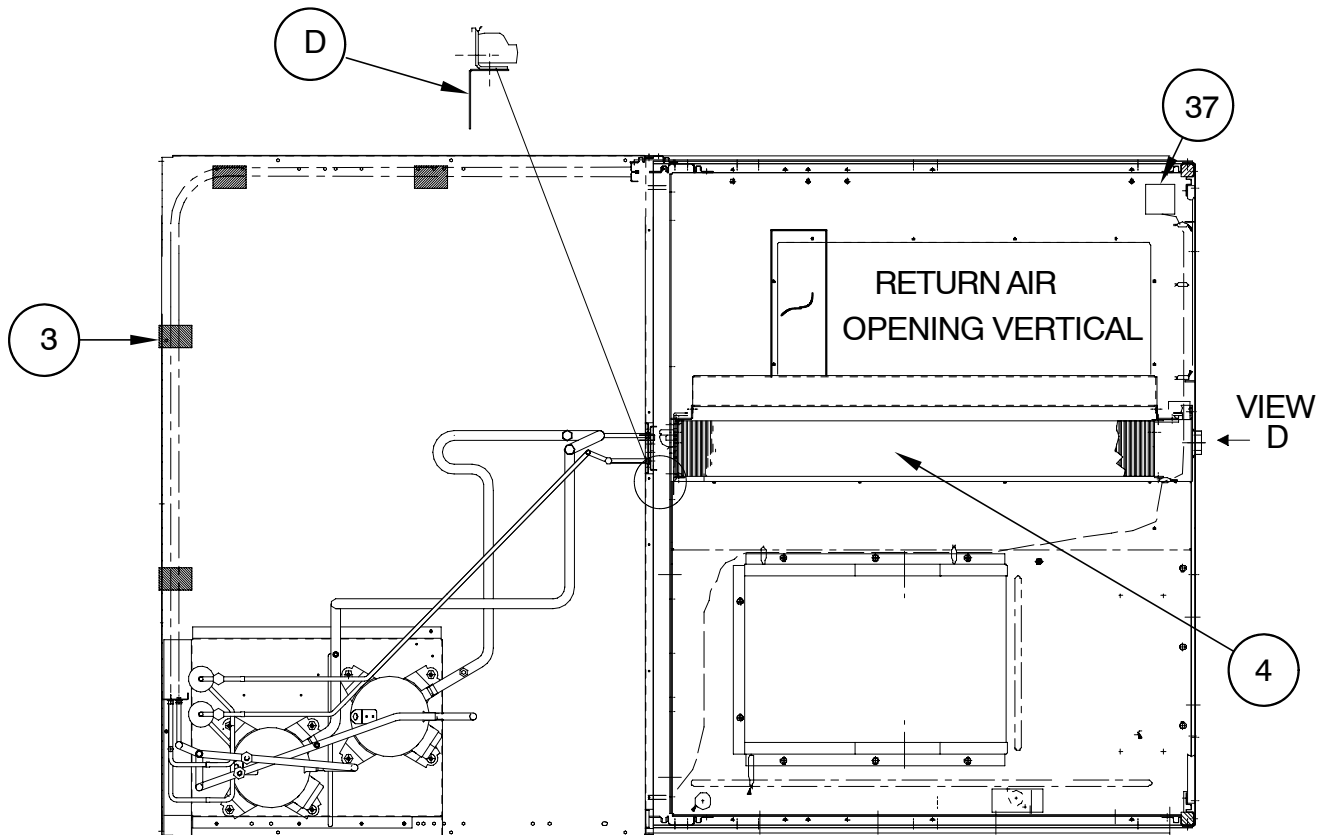
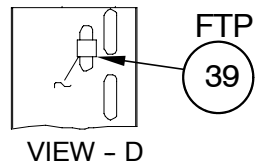
PAE120 PAE150 PARTS LIST (continued)

KEY NO.	DESCRIPTION	FAST PARTS NO.	PAE120H0A00AAA	PAE150H0A00AAA	PAE120L0A00AAA	PAE150L0A00AAA
AJ	POST CENTER (FAN ACCESS)	1171407	1	1	1	1
AK	POST CORNER (COIL)	1171174	1	1	1	1
AL	POST CORNER (CONTL BOX SIDE)	1171172	1	1	1	1
AM	POST CORNER (INDOOR END)	1171309	2	2	2	2
AN	RACEWAY (OFM)	1171428	1	1	1	1
AP	RAIL BASE (FILTER ACCESS)	1171033	1	1	1	1
AQ	RAIL BASE (FAN ACCESS)	1171031	1	1	1	1
AR	RAIL BASE	1171032	1	1	1	1
AV	PLATE MTR MTG	1175891	1	1	1	1
AW	SCROLL (FAN)	1171223	1	1	1	1
B	COVER HEAT	1171372	2	2	2	2
BA	BOLT COMP MTG	1171056	8	8	8	8
BB	DRAIN LINE SEAL (ROUND)	1171447	1	1	1	1
BC	BRACKET MTR ADJ	1175913	1	1	1	1
BD	BRACKET ASY BRG	1175712	2	2	2	2
BE	BLOWER ASY	1175411	1	1	1	1
BF	BRACKET	1175713	1	1	1	1
BG	BRACKET MTR MTG	1175911	2	2	2	2
BH	BRACKET MTR	1175912	2	2	2	2
BJ	BOLT MTR ADJ 5/16-18 X 12"	1175914	2	2	2	2
C	BRACKET BASE (CORNER)	1171071	2	2	2	2
D	BRACKET COIL (HEADER END)	1171070	1	1	1	1
E	BRACKET HEAT	1171304	1	1	1	1
F	STRAP FORMED CAP	1171537	1	1	1	1
G	COVER ASY (TOP)	1171365	1	1	1	1
H	COVER (CONTROL BOX)	1171169	1	1	1	1
J	COVER ASY (RETURN AIR)	1171182	1	1	1	1
K	COVER ASY (SUPPLY AIR)	1171180	1	1	1	1
M	GRILLE (OUTLET)	1171267	2	2	2	2
N	GROMMET COMP 1.62"DIA	1171270	*	8	*	8
N	GROMMET COMPRESSOR 1.25"DIA	1171269	8	*	8	*
P	GUARD (BASERAIL)	1171206	1	1	1	1
W	PAN CONDENSATE	1171359	1	1	1	1
X	PANEL ACCESS (CNTRL BOX)	1171363	1	1	1	1
Z	PANEL FILTER (LOWER)	1171382	1	1	1	1
PARTS NOT SHOWN						
)	HARNESS ASY (COMP)	1171520	1	1	1	1
)	HARNESS ASY (IFM)	1175707	1	1	1	1
)	HARNESS ASY (YAC & PAC PIG TAIL)	1175408	1	1	1	1
)	PLUG ASY (ECON)	1171405	1	1	1	1
)	PLUG ASY (PAC)	1175407	1	1	1	1

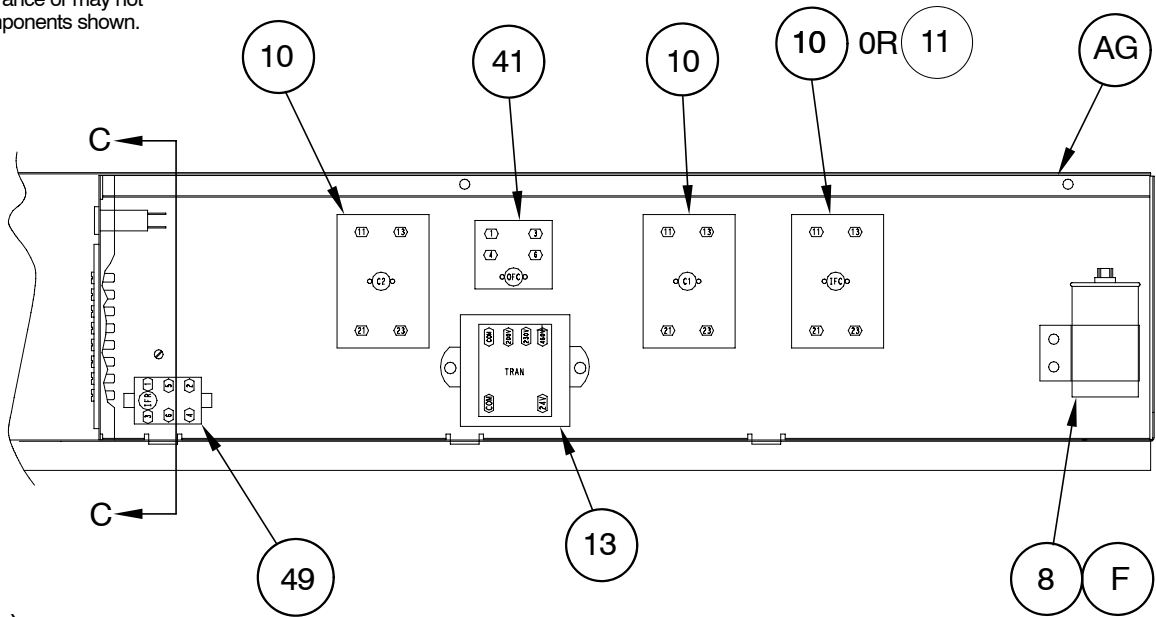
NOTE: This illustration is for reference only. Your unit may differ in appearance or may not include all components shown.



NOTE: This illustration is for reference only. Your unit may differ in appearance or may not include all components shown.

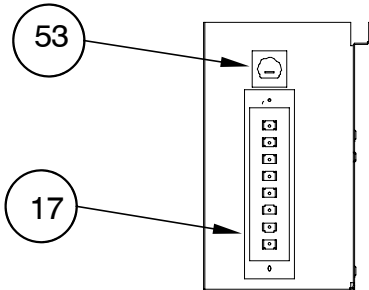


NOTE: This illustration is for reference only. Your unit may differ in appearance or may not include all components shown.

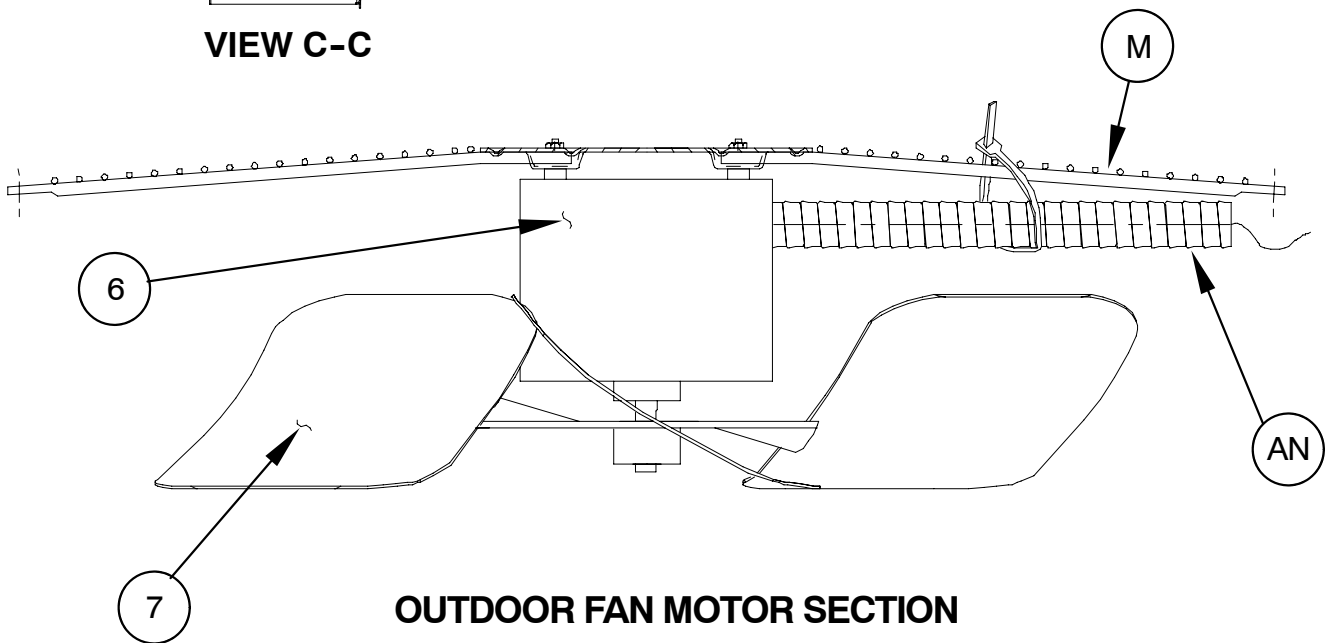


CONTROL BOX ASY.

(CB)

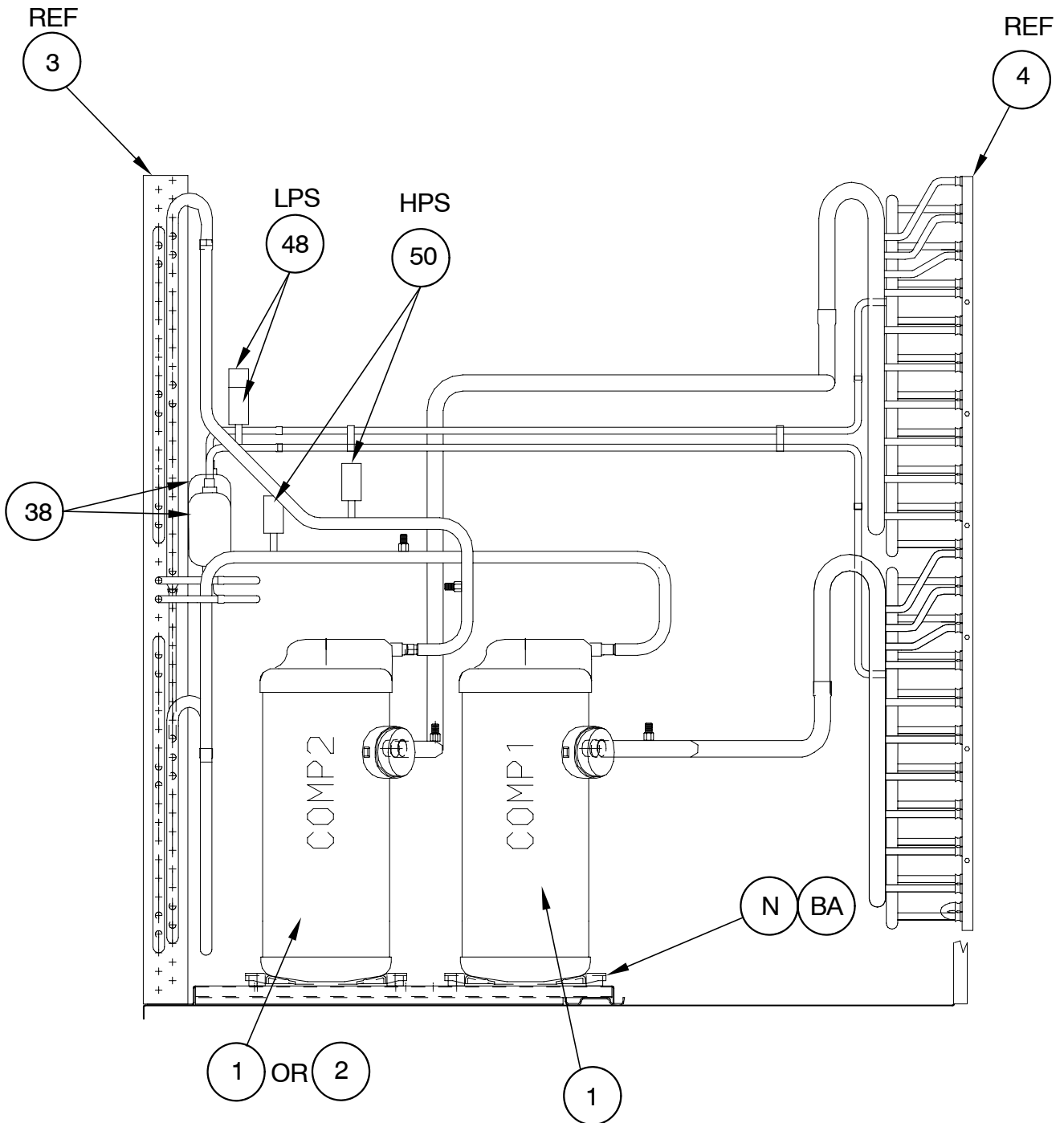


VIEW C-C



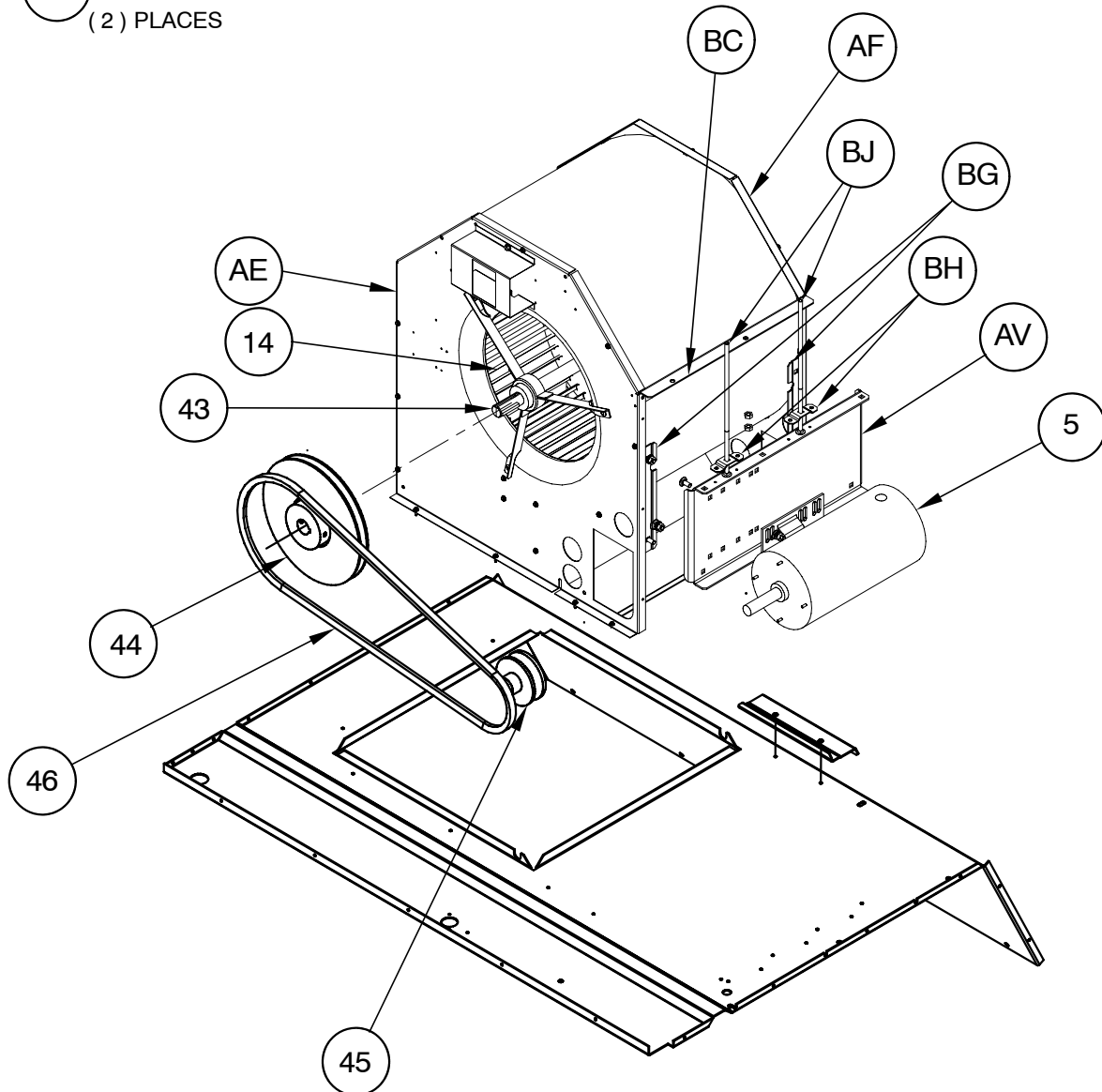
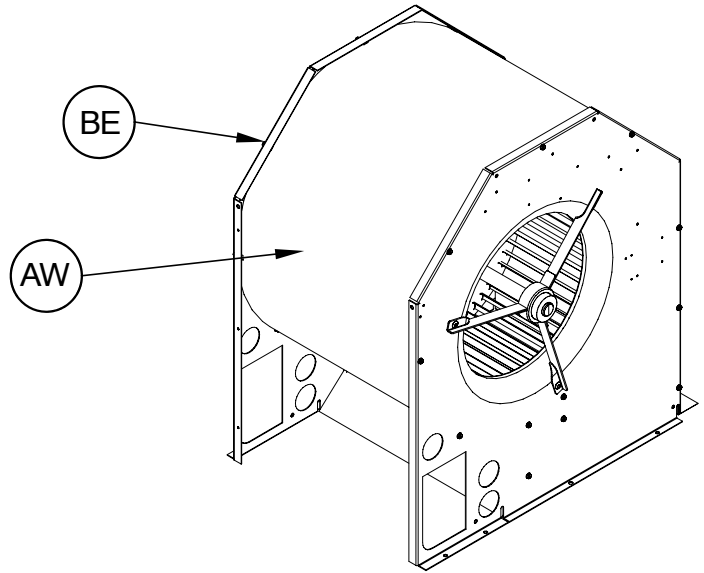
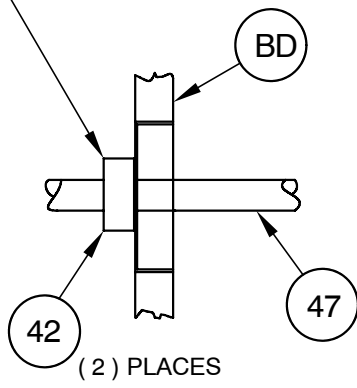
OUTDOOR FAN MOTOR SECTION

NOTE: This illustration is for reference only. Your unit may differ in appearance or may not include all components shown.

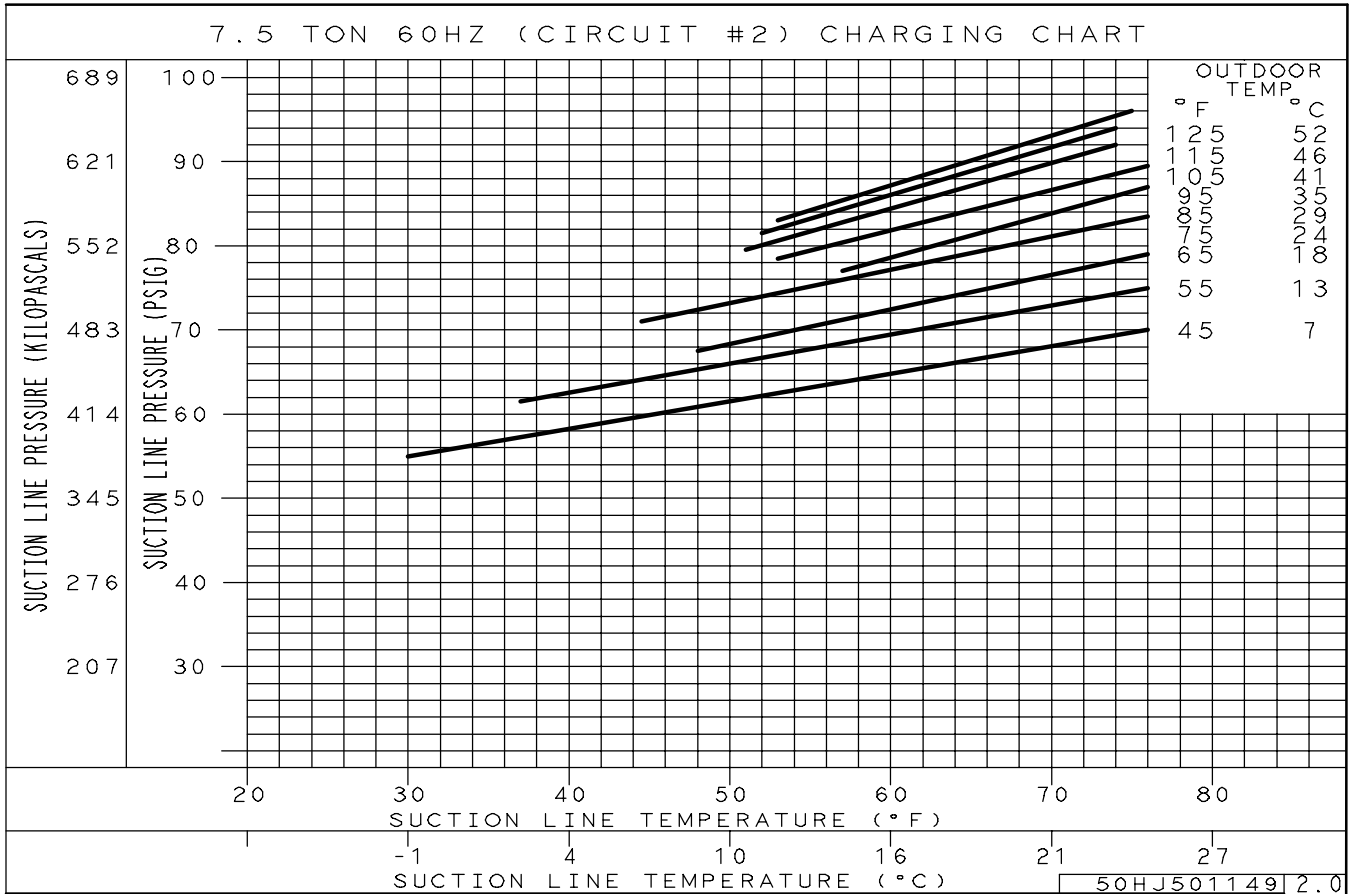
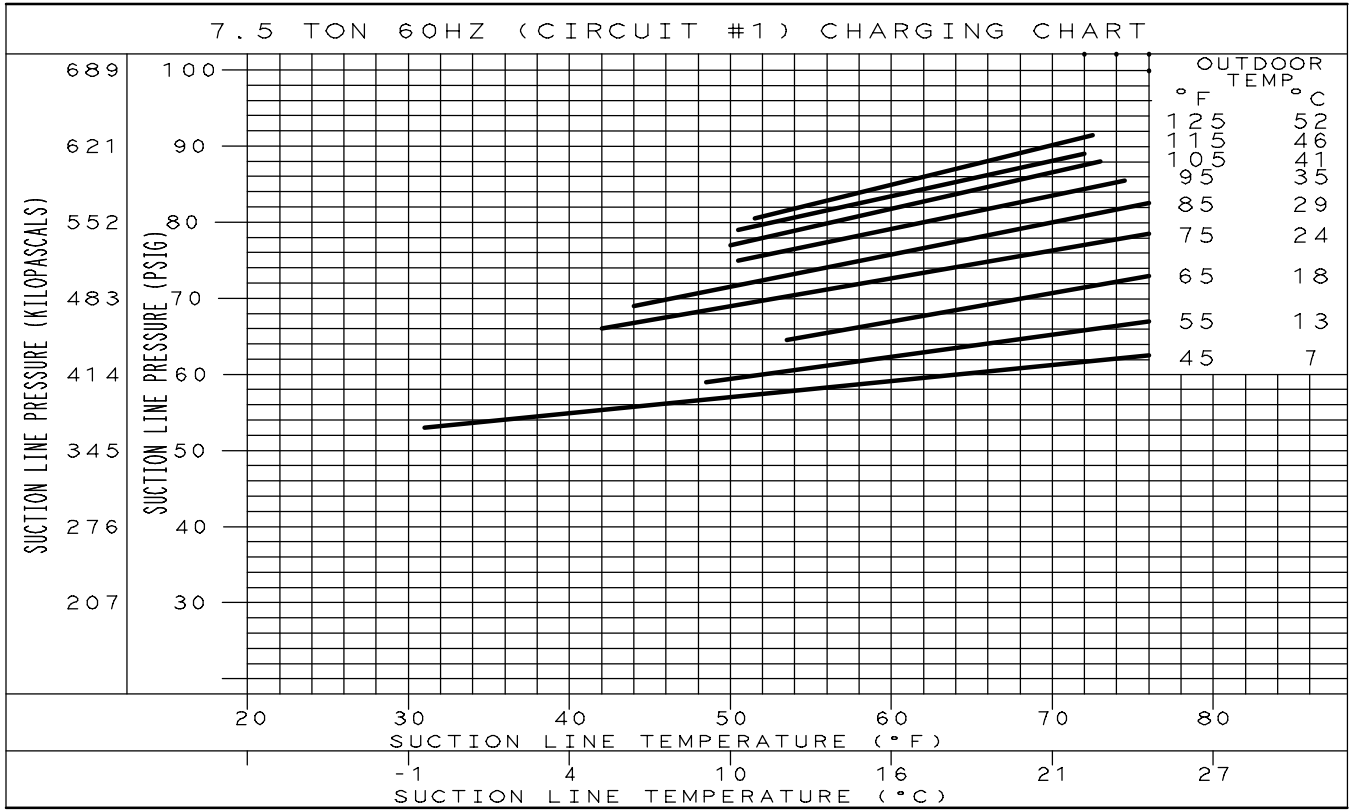


NOTE: This illustration is for reference only. Your unit may differ in appearance or may not include all components shown.

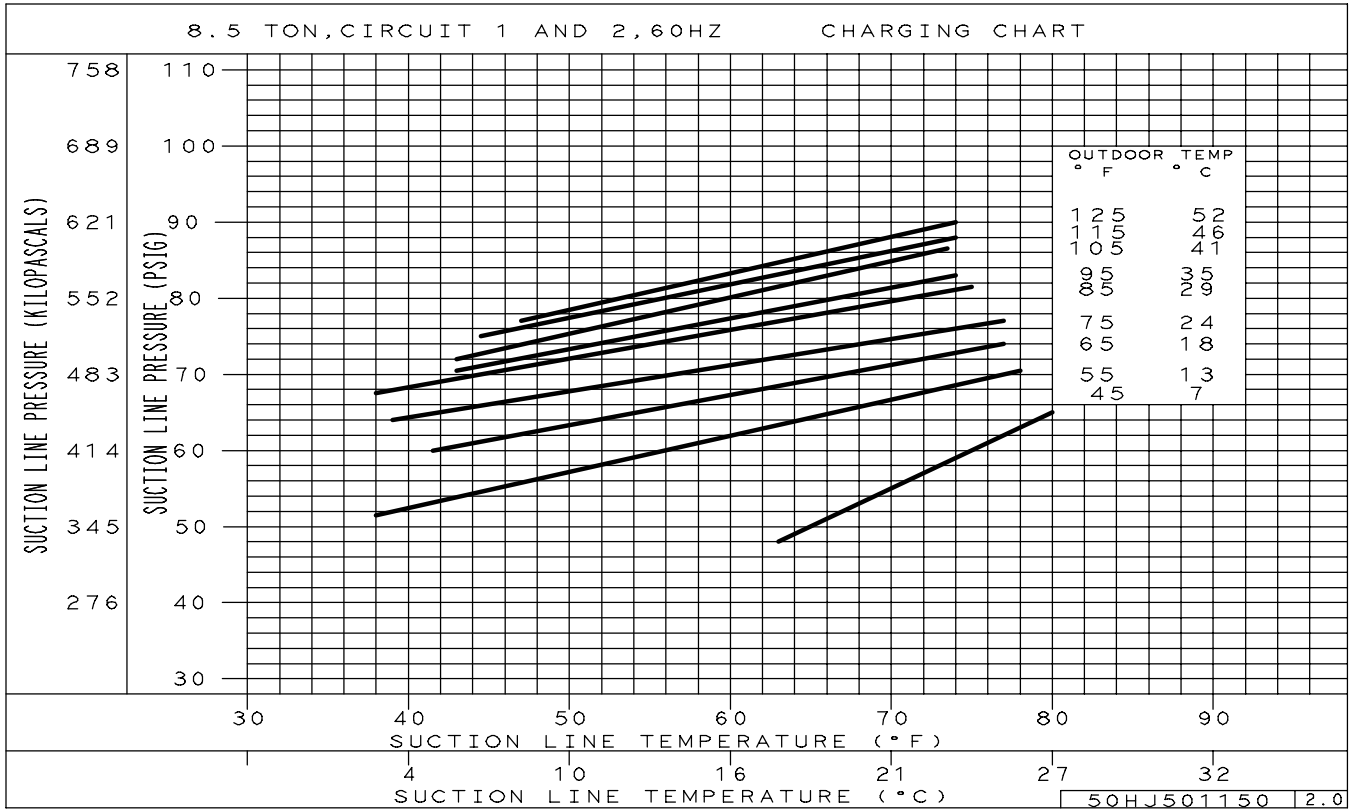
LOCKING COLLAR

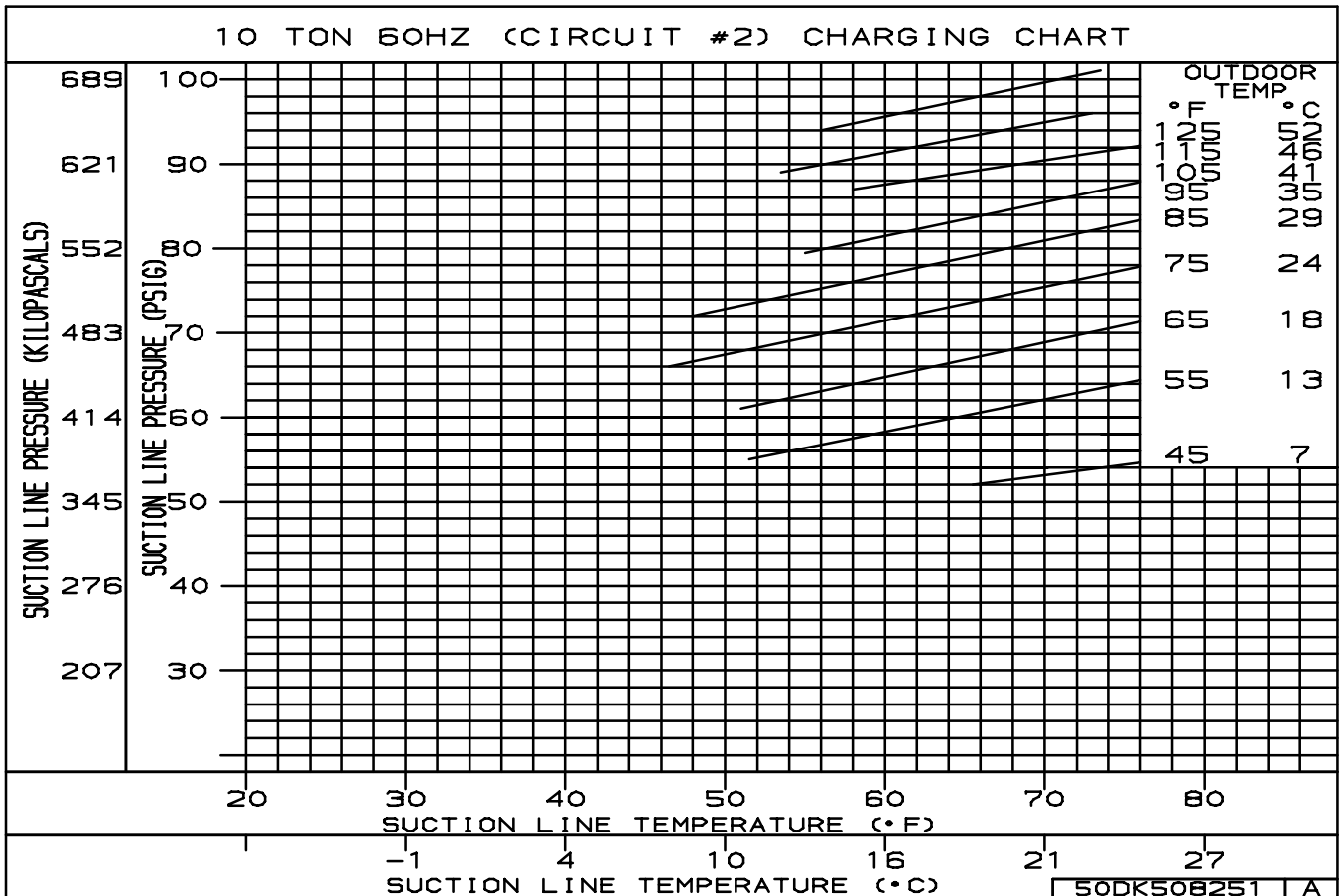
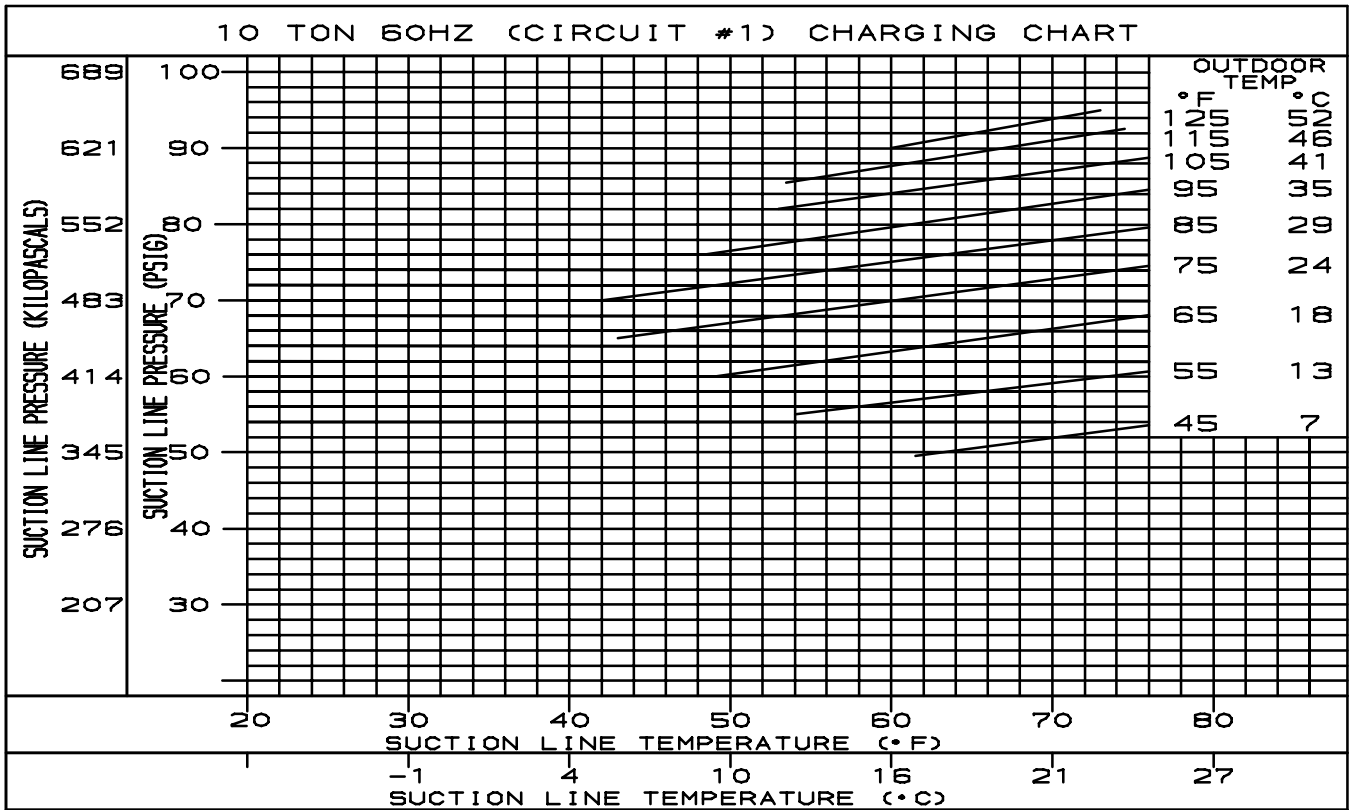


INDOOR FAN SECTION

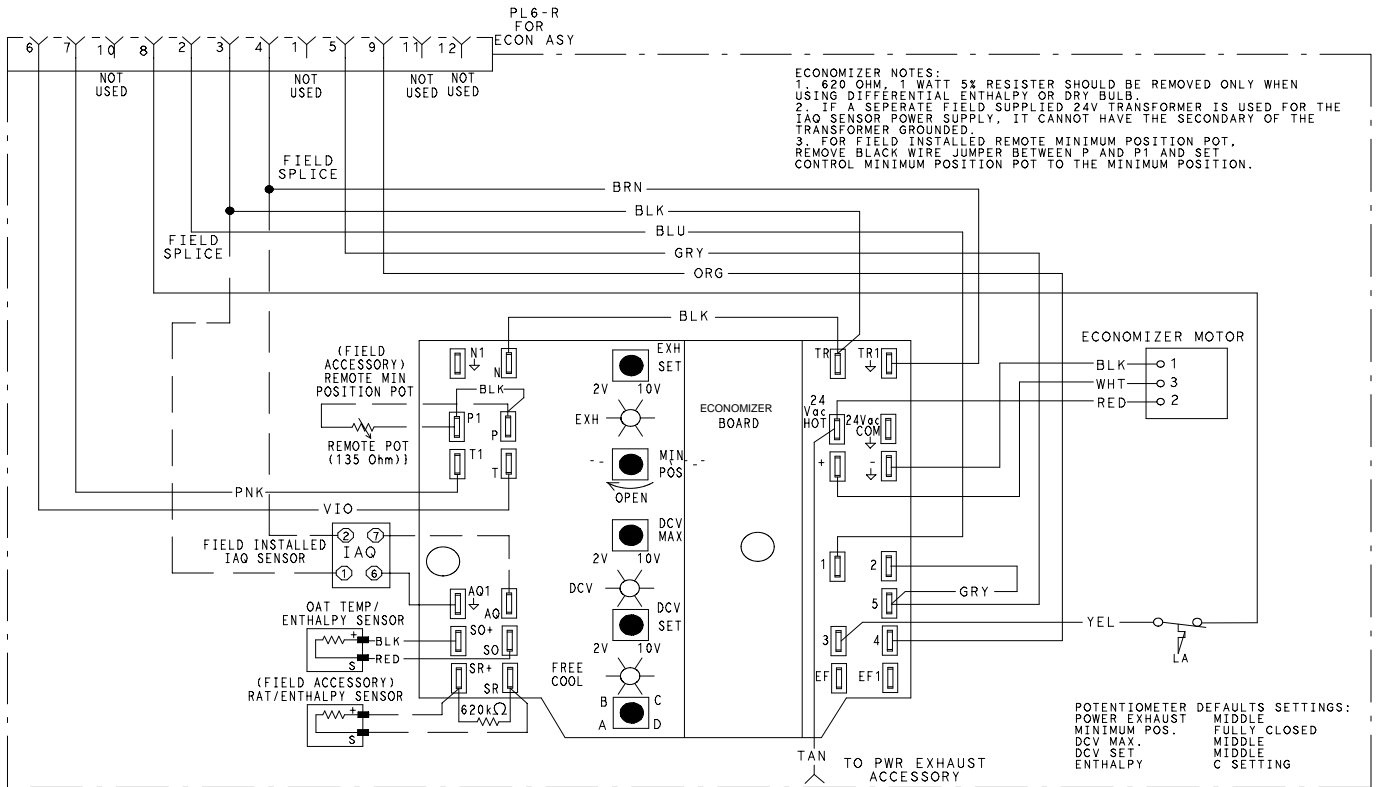


50HJ501149 2.0





50DK508251 | A

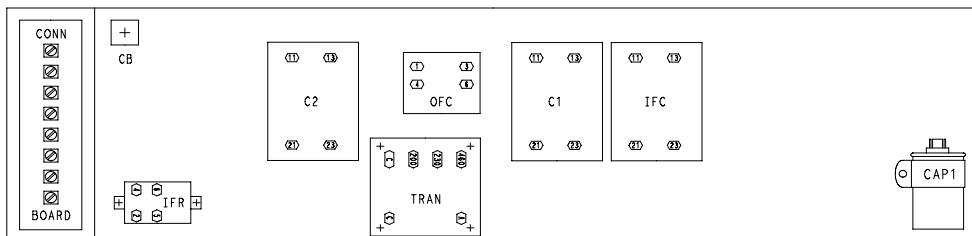


NOTES

- IF ANY OF THE ORIGINAL WIRE FURNISHED MUST BE REPLACED, IT MUST BE REPLACED WITH TYPE 90 C WIRE OR ITS EQUIVALENT.
- COMPRESSOR AND FAN MOTORS ARE THERMALLY PROTECTED. THREE PHASE MOTORS ARE PROTECTED AGAINST PRIMARY SINGLE PHASING CONDITIONS.
- FOR 208/230 UNITS, TRAN IS WIRED FOR 230V UNIT. IF UNIT IS TO BE RUN WITH 208V POWER SUPPLY DISCONNECT BLK WIRE FROM 230V TAP (ORN) AND CONNECT TO 208V TAP (RED). INSULATE END OF 230V WIRE.
- USE COPPER, COPPER CLAD ALUMINUM OR ALUMINUM CONDUCTORS.
- USE COPPER CONDUCTORS ONLY.

- C CONTACTOR, COMPRESSOR
- CB CIRCUIT BREAKER
- CH CRANKCASE HEATER
- CLO COMPRESSOR LOCKOUT
- COMP COMPRESSOR MOTOR
- EQUIP EQUIPMENT
- FPT FREEZE UP PROTECTION THERMOSTAT
- GND GROUND
- HPS HIGH PRESSURE SWITCH
- HS HALL EFFECT SEN.
- I IGNITOR
- IAO INDOOR AIR QUALITY SEN.
- IARH INDOOR AIR RELATIVE HUMIDITY SEN.
- IDM INDUCED DRAFT MOTOR
- IFC INDOOR FAN CONTACTOR
- IFM INDOOR FAN MOTOR
- IFMOVL INDOOR FAN MOTOR OVERLOAD SWITCH
- IGC INTEGRATED GAS UNIT CONTROLLER
- LA LOW AMBIENT LOCKOUT
- LPS LOW PRESSURE SWITCH
- LS LIMIT SWITCH
- MGV MAIN GAS VALVE
- MTR MOTOR
- OARH OUTDOOR AIR RELATIVE HUMIDITY SEN.
- OAT OUTDOOR AIR TEMP. SEN.
- OFC OUTDOOR FAN CONTACTOR
- OFM OUTDOOR FAN MOTOR
- P PLUG
- PL PLUG ASSEMBLY
- POT POTENTIOMETER
- QT QUADRUPLE TERMINAL
- RAT RETURN AIR TEMP. SEN.
- RS ROLLOUT SWITCH
- SAT SUPPLY AIR TEMP. SEN.
- SEN SENSOR
- TRAN TRANSFORMER

COMPONENT ARRANGEMENT



50DK508793 | 6.0