

### MODULAR BLOWER CABINET

2, 3, 4, and 5 TONS

#### FEATURES

- Air conditioning ready
- Heat pump ready (no electric heat)
- Upflow, downflow, horizontal right or left applications
- Thermosetting powder coated steel cabinet
- 115V-1-60 supply voltage
- Matches with AC and HP cased coils

#### SERVICE

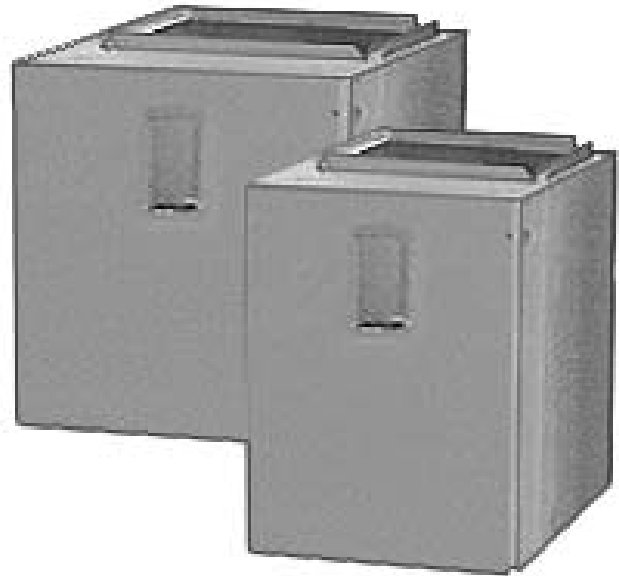
- Direct drive slide-out blower assembly

#### QUALITY

- Internally lined with ½ inch(12.7mm)Tuf-Skin insulation

#### WARRANTY

- 5 year parts limited warranty



Model	Nominal Tons	Nominal CFM	Motor HP	Dimensions H x W x D in (mm)	Unit Weight lbs/kg	Ship Weight lbs/kg
MB08B1500B	2	800	1/3	24 x 15½ x 20½ (610 x 394 x 521)	55/25	58/26
MB12F1900B	3	1200	1/2	24 x 19⅞ x 20½ (610 x 495 x 521)	61/28	66/30
MB16J2200B	4	1600	1/2	24 x 22¾ x 20½ (610 x 578 x 521)	67/30	72/33
MB20L2400B	5	2000	3/4	24 x 24½ x 20½ (610 x 622 x 521)	69/31	75/34

**UNIT SPECIFICATIONS - BLOWERS**

Model Number		<b>MB08B1500B</b>	<b>MB12F1900B</b>	<b>MB16J2200B</b>	<b>MB20L2400B</b>
Application		Upflow / Downflow / Horizontal			
Electrical		Volts-Phase-Hz. 115 - 1 - 60			
Data	Minimum Circuit Ampacity	6.3	8.1	8.1	13.8
	Time Delay Fuse (Amps)	15			
	Maximum Fuse or Breaker Size (Amps)	15			
Blower	Size	DD10 - 7	DD10 - 8	DD10 - 9	DD10 - 9
	Horsepower - Speed	1/3 - 3	1/2 - 3	1/2 - 3	3/4 - 3
	Full Load Rated Amps	5.0	6.5	6.5	11.0
Transformer		(115/24 VAC) 40 VA			
Weight Unit / Shipping Lbs.(Kg)		55/58 (25/26)	61/66 (28/30)	67/72 (30/33)	69/75 (31/34)

<b>MB08</b>	ESP in wc							
SPEED	VOLTS	0.2	0.3	0.4	0.5	0.6	0.7	0.8
Low	115v	1011	1015	1011	985	942	875	796
Med	115v	1241	1225	1202	1175	1135	1075	991
High	115v	1387	1380	1372	1350	1311	1225	1119

<b>MB16</b>	ESP in wc							
SPEED	VOLTS	0.2	0.3	0.4	0.5	0.6	0.7	0.8
Low	115v	1046	1055	1055	1046	1034	1015	981
Med	115v	1369	1380	1384	1384	1368	1340	1300
High	115v	1718	1735	1750	1750	1736	1690	1634

<b>MB12</b>	ESP in wc							
SPEED	VOLTS	0.2	0.3	0.4	0.5	0.6	0.7	0.8
Low	115v	1037	1050	1058	1055	1041	1025	996
Med	115v	1323	1340	1352	1355	1345	1320	1276
High	115v	1671	1685	1696	1685	1651	1600	1531

<b>MB20</b>	ESP in wc							
SPEED	VOLTS	0.2	0.3	0.4	0.5	0.6	0.7	0.8
Low	115v	1397	1380	1366	1348	1321	1288	1235
Med	115v	1796	1790	1777	1750	1705	1640	1554
High	115v	2336	2300	2255	2190	2106	1995	1873

**Dimensions and Clearances**

**14<sup>3</sup>/<sub>8</sub> (2 - 2<sup>1</sup>/<sub>2</sub> Ton)**  
**17<sup>7</sup>/<sub>8</sub> (3 - 3<sup>1</sup>/<sub>2</sub> Ton)**  
**21<sup>1</sup>/<sub>2</sub> (4 Ton)**  
**23<sup>3</sup>/<sub>8</sub> (5 Ton)**

**3/4"**  
**5/8"**  
**12"**  
**8 1/2"**  
**24"**  
**20 1/2"**

**Low Voltage Entrance**  
**Line Voltage Entrance**

CLEARANCES	
All Sides .....	0"
From Supply Duct .....	0"
Recommended Service From Front .....	20" (508mm)
(Service for blower)	

**ALL DIMENSIONS IN INCHES**  
**1 IN = 25.4 MM**

**15<sup>3</sup>/<sub>8</sub> (2-2<sup>1</sup>/<sub>2</sub> Ton)**  
**19<sup>1</sup>/<sub>4</sub> (3-3<sup>1</sup>/<sub>2</sub> Ton)**  
**22<sup>7</sup>/<sub>8</sub> (4 Ton)**  
**24<sup>1</sup>/<sub>2</sub> (5 Ton)**

**MODEL NUMBER IDENTIFICATION GUIDE**

<b>PRODUCT FAMILY</b>		<b>M</b>	<b>B</b>	<b>12</b>	<b>F19</b>	<b>00</b>	<b>B</b>	<b>2</b>	<b>SERIES</b>
M = MODULAR									<b>SALES CODES</b>
B = MODULAR BLOWER (115V) F = MODULAR ELECTRIC FURNACE (208/230V) V = MODULAR VARIABLE SPEED BLOWER (208/230V)									<b>FIELD INSTALLED HEATER</b>
<b>NOMINAL CFM RANGE</b>									<b>COIL WIDTH MATCH</b>
08 = 800									B15 = 15 <sup>1</sup> / <sub>2</sub> Cabinet
12 = 1200									F19 = 19 <sup>1</sup> / <sub>8</sub> Cabinet
16 = 1600									J22 = 22 <sup>3</sup> / <sub>4</sub> Cabinet
20 = 2000									L24 = 24 <sup>1</sup> / <sub>2</sub> Cabinet

International Comfort Products, LLC  
 Lewisburg, Tennessee 37091 U.S.A.  
 www.GoTempstar.com